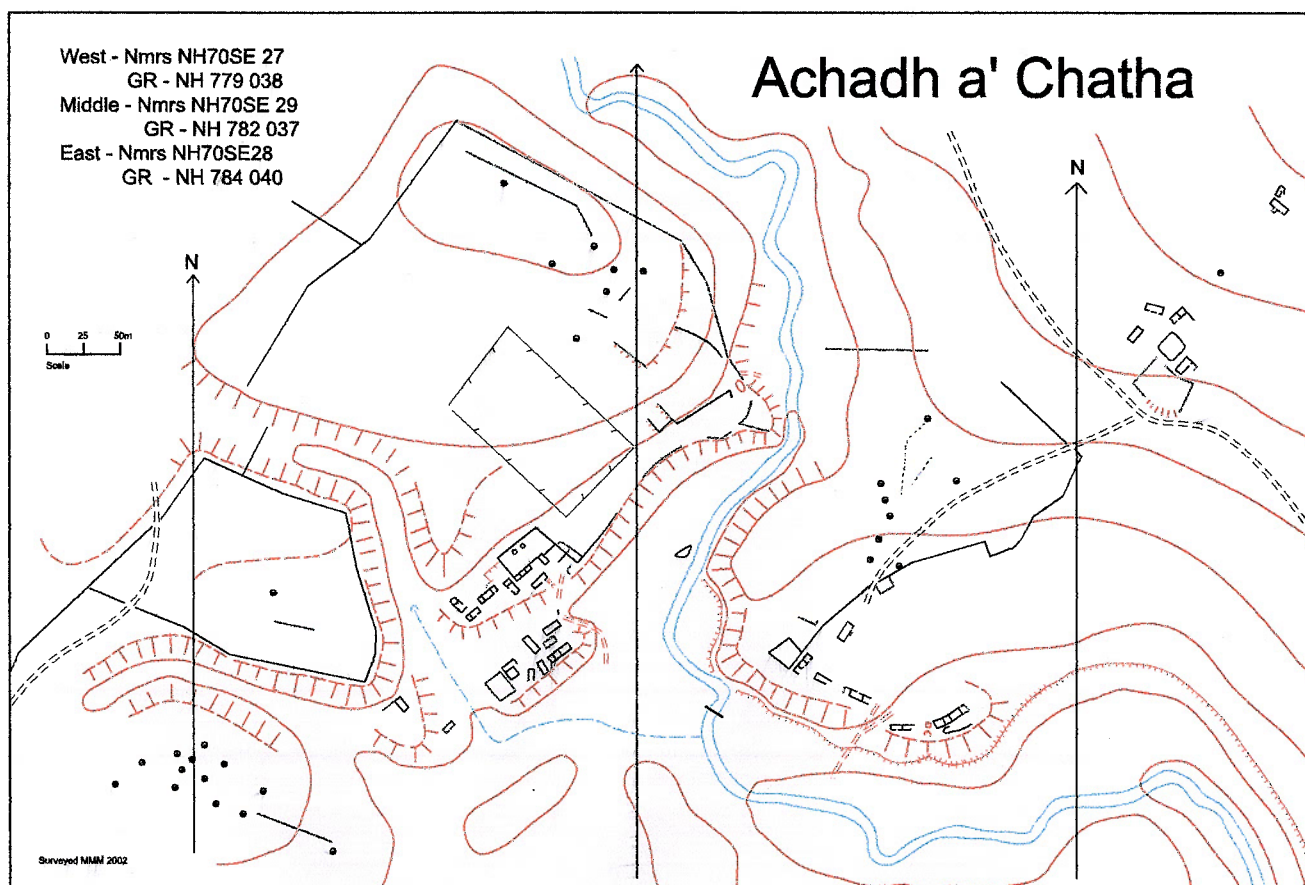


**Survey and Record of Visible Remains
of the settlements known as**

Achadh a' Chatha

Raiths Burn, near Kingussie, Inverness-shire



M. Marshall

Contents

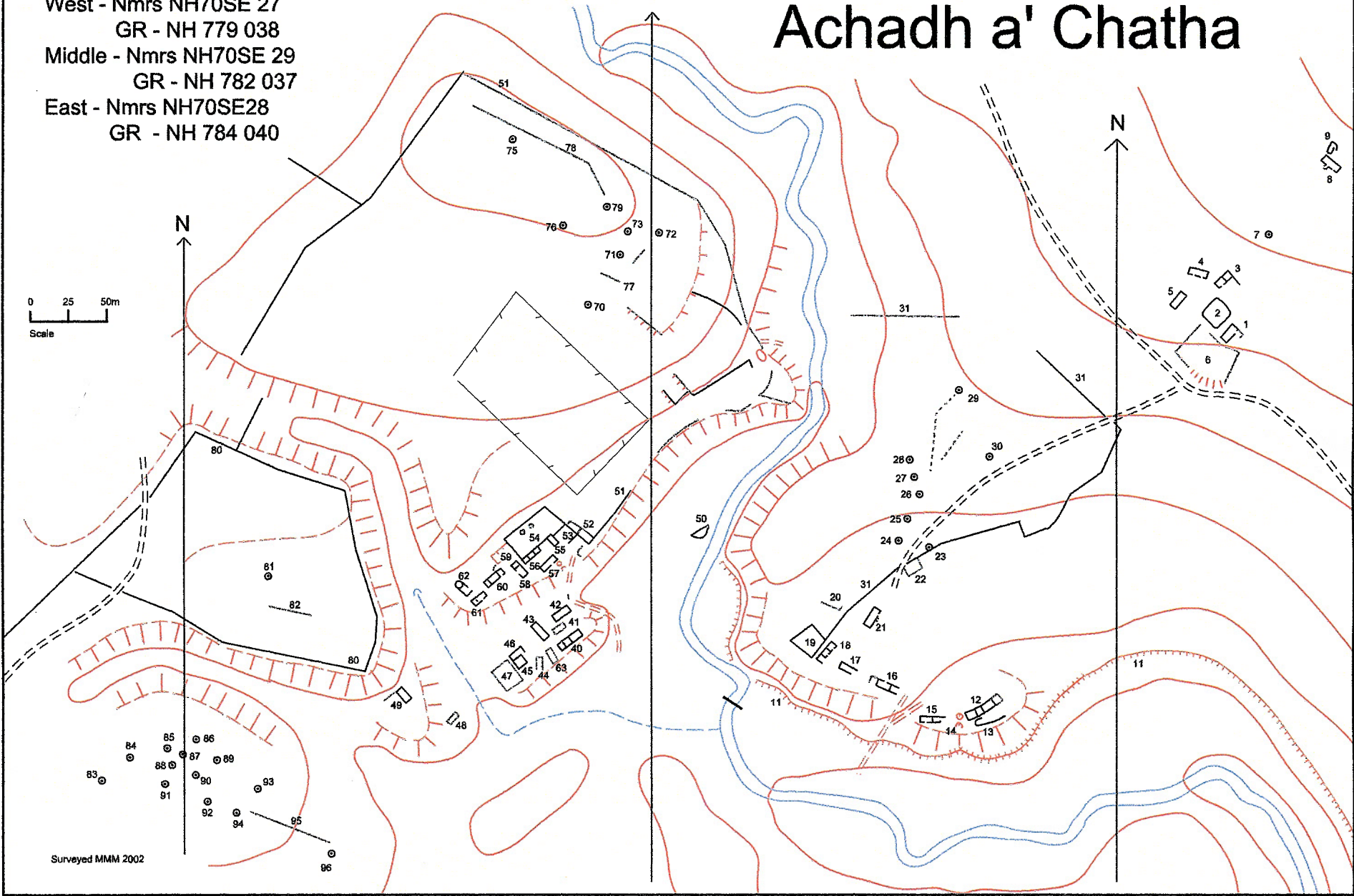
1. Survey of Achadh a' Chatha
 2. Gazetteer of recorded features
 - East settlement
 - Middle settlement (?Acharumach)
 - West settlement (?Achaha)
 3. Photographs
 4. Record of archaeological remains of possible Victorian shooting lodge, Raitts Burn.
- Appendices -
- A - Some notable dates connected with Raitts
 - B - Place names around Raitts - recollections of Bill Ramsey
 - C - Eviction "lists" of 1801-1806 - compiled by Charles Fraser Mackintosh 1848

Location of Achadh a' Chatha



West - Nmrs NH70SE 27
GR - NH 779 038
Middle - Nmrs NH70SE 29
GR - NH 782 037
East - Nmrs NH70SE28
GR - NH 784 040

Achadh a' Chatha



Achadh a' Chatha - (East) GR - NH 784 040
Nmrs - NH70SE 28

Visited Sunday 14th July 2002. Weather bright but overcast, warm and with a light breeze. The settlement is situated at a height of 370m on a SW facing slope, (400m NE of (middle) Achadh a' Chatha - NH70SE 29). It comprises of 6 buildings and 2 enclosures. An area of improved land lies at the same height to the east of this settlement. A "farmstead" of 3 unroofed buildings and an enclosure appear on the 1st edition OS map of 1872.

1 - Structure GR - NH 78419 03995. Photo 1/14 from NE

Rectangular building on a NE/SW axis - measures internally 9m x 3.5m. The remains of the stone walls have a spread of 1m and are 0.3 - 0.4m in height. Could be an entrance at N corner of SE wall, where there is also a possible annexe, 2m x 1.5m. A ?working area lies to the SE, and enclosure 2 lies 3m to NW.

2 - Enclosure GR - NH 78413 04005. Photo 1/15 from N

Roughly 13m square with very rounded corners The substantial surrounding earth and stone embankment is 0.6 - 0.7m in height (but 0.8 - 0.9m in the northern corner) and has a 1.5m spread. The SW wall is revetted out. Grassy interior is extremely lush.

3 - Structure GR - NH 78413 04029. Photo 1/18 from S, and photo 1/19 from NE

Rectangular structure on a NE/SW axis measures internally 7m x 2.5m. Two compartments, possibly 3, N is 2.5m long and S is 3.5 m, much tumble to inside. Remains of the stone walls spread to 1m and are 0.5m high. Extension of NE wall to south for 6m is 0.2m in height. Possible entrance in SE wall of south compartment

4 - Structure GR - NH 78399 04034. Photo 1/17 from SE

On a WNW/ESE axis, measures internally 8m x 2.5m. Extensive remains of the stone walls have a spread to 1.5m, particularly on the north side, and rise generally to 0.5m. Two entrances in south wall. Possible evidence of an internal wall. Generally heather covered.

5 - Structure GR - NH 78384 04017. Photo 1/16 from NE.

Rectangular structure on a NE/SW axis, much of this is completely covered with heather. Internally 8m x 2m. Southern part of the walls are very evident, rise to 0.2 - 0.3m and have a spread of 0.8m. No evidence of an entrance or of internal walls.

6 - Enclosure GR - NH 78406 03983.

Sub-rectangular, 30m x 22m, slopes gently to SW, bounded by the track on the SW where it has a retaining embankment. Embankments are incomplete. Bracken covered in south.

7 - Clearance cairn GR - NH 78443 04067. Photo 1/20 from W

Low cairn, 2.5 x 2 x 0.3m in height.

8 - Structure GR - NH 78481 04118. Photo 1/22 from SE

Rectangular building on a NW/SE axis, lies 100m to NE of main group of buildings. Measures internally 9m x 3m. Plentiful stone footings rise to 0.3 - 0.4 with spread of generally 0.7-0.8m but 1m in places. Two entrances in SW wall. Possible "annexe", 3m x 2m, on SW side - rough stone footings are barely discernible.

9 - Structure GR - NH 78487 04127. Photo 1/21 from the southwest

An oval structure on a NE/SW axis, this measures 7m x 2m internally and could be an animal pen. The low turf and stone banks are 0.3m in height and have a spread of 0.8m, they have rounded corners and are not as evident in the north. A stone alignment curves round at the NE making a possible entrance.

10 - not allocated

Achadh a' Chatha - (Middle) GR - NH 782 037
Nmrs No - NH70SE 29

Visited Sunday 14th July 2002. Weather bright but overcast, warm and with a light breeze. The settlement is situated at a height of 350m on a SW facing "spur" on the east bank of the Raitts Burn. It comprises of 6 buildings, 2 enclosures and a platform. An area of improved land lies to the NE of the settlement, this has a surrounding earth and stone bank. A "township" of 4 unroofed buildings and an enclosure appears on the 1st edition OS map of 1872.

11 - Linear feature/Laide GR at northwest end NH 78081 03831. Photo 1/7 east part of laide from west

The line of a ditch at an altitude of 332m can be followed for a considerable distance, although at one point at its west end it has been eroded by the burn. For the most part it is evident as a terrace, but between GR NH 78247 03694 and NH 78338 03747 it is quite substantial, being 1.5m wide and with an embankment/depth of 1m. In some parts the feature has been overwhelmed by bog. On the 1st edition OS map it is continuous towards Balavil House and at some places there has been a modern clay pipeline laid within it. It is speculated that this may be part of an early hydro scheme for Balavil House.

12 - Structure GR - NH 78267 03726. Photo 2/2 from west and Photo 2/3 middle compartments from WSW

Rectangular curving building on a NE/SW axis. It is 28m long and has 4 compartments. The westmost compartment measures internally 7m x 2.5m, the remains of the stone walls are 0.3m in height. The middle two compartments are more obvious, the west of these is 5m long and may have a door in south wall, the east is 9m x 3m. The stone wall footings of this central part are generally 0.4m and have a spread of 0.8m. A less obvious addition can be made out to the east, 4m x 2.5m, the walls are quite wasted and bracken covered - it may be a byre.

13 - Feature/?Structure GR - NH 78254 03714.

Adjacent and to the south of structure 12, a low trailing stone wall runs parallel to and 7m distant from structure 12. At its west end it curves northwards and is recessed into the slope, with a stone facing enclosing an area 4m x 3m.

14 - Feature/?Corn-drying kiln GR - NH 78248 03717. Photo 1/36 from NNE

Adjacent and at the west end of 12 and on the edge of a steep south facing slope. Two depressions on a N/S axis - south one is open to SW and there is evidence of a stone facing at the back, north one is 1.2m diameter and also has evidence of a stone edge which may be the bowl, both are 0.4-0.5m deep.

15 - Structure GR - NH 78229 03717. Photo 1/35 from ESE

Rectangular structure on an E/W axis, situated on the edge of a steep south facing slope. Internal measurement is 12m x 2.5m. The substantial remains of stone walls are 0.6m in width and 0.5m in height (but in west 1m and north 0.8m). The building is open at its E end, where there is an extension of the north wall, 3m in length. Two compartments, east is 5m long and west is 7m long. There could be an entrance, 0.6m wide, in the south wall of the west compartment.

16 - Structure GR - NH 78194 03744. Photo 1/34 from E

Rectangular structure of 3 (possibly 4) compartments on a NW/SE axis. Middle compartment has internal dimensions of 8m x 3m with much tumble in its north part. Remains of stone walls are quite substantial, 0.6m in height (at north end 1m) and spread to 1m. Entrance halfway along east wall. An "addition"/?byre at the south end, 3m square, with walls 0.5m high is open at its south end. At the north end, barely discernible in the bracken, there is a low earth bank forming a further compartment, 4m x 3m. It is open to the west.

17 - Structure GR - NH 78165 03755. Photo 1/33 from NW

Rectangular structure on a NW/SE axis, internal measurements 8m x 2.5m. Substantial ruined stone walls with 1m -1.5m spread and 0.6-0.8m height, much tumble. Open to the south, east wall extends an additional distance of 4m.

18 - Structure GR - NH 78151 03769. Photo 1/31, E. compartment from NW. Photo 1/32, W compartments from N

Rectangular building of 3 compartments on a NE/SW axis. Eastern two compartments are more

substantial, middle one is 5m x 2.5m and east one 3.5m x 2.5m internally, both have entrances 0.6m wide in the south wall. The ruined stone walls spread to 1m and rise to 0.6-0.7m(0.8 in places). West compartment is 5m x 3m internally, and walls although very evident are less substantial, south wall being almost non-existent and west wall 0.4m high.

19 - **Enclosure** GR - NH 78144 03782. Photo 1/29, SW retaining wall from W. Photo 1/30 NW and NE walls from E

Measures internally 13m E-W, and 15m N-S. Substantial enclosing stone and turf walls with a spread of 1-1.5m and a height of 0.4-0.5m in the north and east. In the southwest the wall drops away and is revetted to a height of 1m -1.2m on the outside, the southeast edge too is revetted, to a height of 0.6-1m. The boundary wall 31 is a continuation NE of the SE wall of this enclosure.

20 - **?Platform** GR - NH 78149 03804. Photo 1/27 from SSE

Rectangular terraced ?platform on a NW/SE axis, may be the base for a building. Revetted slope on southwest, 18m in length and 0.7m in height with a corner at its SE end.

21 - **Structure** GR - NH 78181 03785. Photo 1/28 from south

Substantial rectangular building on a NE/SW axis. Internal measurement 11m x 3m. Substantial remains of the stone walls have 1m spread and are 0.5m in height, but 1m at north end. Entrance in east end of south wall and possibly the middle where there are the stone footings of a small porch. May be an internal wall dividing off westmost 2.5m.

22 - **Enclosure** GR - NH 78210 03842. Photo 1/26 from NE

Abutting and on the south side of the boundary wall 31. Earth banks, with some stones, have a spread of 1-1.5m and height of 0.4m generally, are wasted in parts and enclose a rectangular internal area of 12m x 6m. Boundary wall is 1m in height at this point

23 - **Clearance cairn** GR - NH 78220 03855.

Low cairn, 5m x 3m x 0.4m in height, attached to and on north side of boundary wall.

24 - **Clearance cairn** GR - NH 78200 03861. Photo 1/24 from west

4.5m in diameter x 1m height. Small stones

25 - **Clearance cairn** GR - NH 78206 03876.

4m diameter x 0.6 in height (but 1m height on SW side).

26 - **Clearance cairn** GR - NH 78216 03899.

3m diameter x 1m height. May be recent. Large stones.

27 - **Clearance cairn** GR - NH 78215 03912.

3m diameter x 0.6 in height

28 - **Clearance cairn** GR - NH 78212 03928

3m diameter x 1m height. Large boulder

29 - **Clearance cairn** GR - NH 78257 03982.

4m x 2m. Could be a result of recent activity, low linear lines of clearance material are to be seen to the south

30 - **Clearance cairn** GR - NH 78287 03927. Photo 1/23 from N

5m x 3m. Comprised of large boulders, this could have been quite recently formed.

31 - **Linear Feature/Boundary wall** Photo 1/25 southern part from clearance cairn 23 looking SW

Boundary wall around area of improved land. In the southern part the wall is much enhanced by clearance material. In the NE quite it has a substantial spread to 1.5m. North part has disappeared for some distance, and then is continuous to the burn but less obvious.

32 - 39 - not allocated

Achadh a' Chatha - (West) GR - NH 779 038
Nmrs No - NH70SE 27

Visited Sunday 14th July 2002. Weather bright but overcast, warm and with a light breeze. The settlement is situated at a height of 340m on glacial terraces of relatively fertile and well-drained land. To the north and west of the settlement there are large areas of improved ground, elevated and bisected by deepcut meltwater channels. There are two groups of buildings, each situated on its own terrace. The lower settlement has 7 buildings and 1 enclosure, the buildings appear to have been robbed of smaller stones, many of the remaining stones being quite sizeable. The upper settlement appears to be the more recently occupied. It comprises of 7 buildings and 2 enclosures. The ruins of 3 buildings and an enclosure appear on the 1st edition OS map of 1862.

Photos 2/26 and 2/27 - General view of settlement from SE

A constructed track leads up to the lower settlement from the SE, it continues over a small stream, where a stone setting forms a small footbridge, and up to the upper settlement.

Lower settlement - Situated on a grassy terrace, some outcrops of heather. In the western section the heather had been recently burnt. Appears to have been "robbed" of smaller stones. Photo 2/15 viewed from west.

40 - Structure GR - NH 77961 03770. Photo 2/7 from SW

On a NE/SW axis, this building is situated on a raised "spur" and slopes gently to the east. Overall length is 18m. Comprised of three compartments, the east and middle are more intact than the west. Remnants of the walls of the eastmost two compartments contain some sizeable stones (0.5m), they are generally 0.6 - 0.7m in width and 0.2 - 0.3m in height. Middle compartment is 4m x 2.5 internally, possible door in south wall, some tumble internally. East compartment is 7m x 2.5m internally, West compartment is 4m x 2.5m, walls of this are very low, a few stones only.

41 - Structure GR - NH 77953 03776. Photo 2/6 from SW

A rectangular dished area on a NE/SW axis, measuring 7m x 2m. Grassy. Occasional stones only.

42 - Structure GR - NH 77959 03786. Photo 2/5 from west.

On a NE/SW axis, mostly heather covered. Dished area internally, measures 12m x 3m. A few large stones are all that remain of the walls, some of these are 0.5m in height, but it is difficult to make out a width to the walls. No entrance evident.

43 - Structure GR - NH 77937 03771. Photo 2/4 from southeast

NW/SE axis - measures internally 10m x 3m. The low stone footings of the walls comprise of a few large stones and are roughly 0.8m in width and 0.2 - 0.3m in height. No evidence of internal walls or of an entrance.

63 - Structure GR - NH 77945 03759

Rectangular building on a NW/SE axis with internal dimension of 10m x 2.5m. Discernable as a shallow dished area in the heather. More distinct at its north end where it is recessed into the slope and a bank rises to 0.4m and there is a couple of large boulders.

44 - Structure GR - NH 77938 03754. Photo 2/8 from south.

This rectangular depression is on a N/S axis, is 0.3-0.5m deep and is open at its south end. It is 6m x 2.5m. The three sides have earth banks with 1-1.5m spread, in the NE corner the knoll reaches a height of 1m.

45 - Structure GR - NH 77929 03754. Photo 2/9 from east.

This building is 4m square internally. It is to the south and abutting onto structure 46. Rough stone footings 0.3m in height and generally 0.8m in width but with a good bit of tumble and spread. No evidence of an entrance

46 - **Structure** GR - NH 77925 03759. Photo 2/10 from ENE

On a NE/SW axis, this measures internally 8m x 2.5m. Large stones form the wall footings, which are 0.5m in height and generally 0.8m in width. Open at east end of south wall, but no other evidence of an entrance. Structure 45 appears to have been a later addition to the south.

47 - **Enclosure** GR - NH 77922 03747. Photo 2/12 from west

Measuring 14m x 11m internally, this enclosure is surrounded by an earth and stone bank. On a gentle slope which faces SW

48 - **Structure** GR - NH 77889 03716. Photo 2/11 from the west

A rectangular structure on a NE/SW axis this measures 7m x 2.5m internally. The low turf and stone banks are 0.1-0.2m in height. No evidence of an entrance. Covered in burnt heather and grass

49 - **Structure** GR - NH 77857 03729. Photo 2/13 from NW

On a NW/SE axis, internal measurements 9m x 3m. Remains of the stone walls reach 0.4-0.5m and spread to 1m. Possible entrance in E wall but no evidence of internal walls. A wasted earthbank stretches to SW, it may be the remains of an associated enclosure.

50 - **Feature** GR - NH 78071 03857. Photo 1/8 from east

An amorphous feature, roughly "D" shaped, lies close to and on the west bank of the stream, to the east of the settlement. It has a retaining bank, between 1 and 1.5m in height forming the curved side on the east and south. Long axis, NE/SW is 10m in length, short axis 4m. It has a few randomly-sited stones and it may be possible to make out the line of a narrow channel curving its way through the feature. Interestingly, the laide to Balavil House takes off from the opposite bank of the stream at a point just downstream of this feature.

Upper settlement - Situated on a SE facing grassy terrace, just 30m to the north of the lower group of buildings. Photo 2/14 from SSW

Spring at GR NH 7786003794. Some stones probably placed strategically. Photo 2/16 from southeast.

51 - **Linear feature**

Earth and stone embankment which bounds the large area of improved land (centred on GR - NH 77921 04227) above and to the north of settlement. It is not continuous - see plan, and has various "spurs" indicating that it has been much altered. It is quite wasted particularly in the NE.

52 - **Feature/?Pen** GR - NH 77979 03839

A depressed sub-rectangular area immediately to the east and in the corner of the boundary wall 51. Measures internally roughly 20m x 3m. Divided into 2 compartments by an earth and stone bank, 0.3m high, which continues west as feature 53. South compartment is 11m long and north is 9m tapering at its north end. Bounded on its east side by an earthbank, which in its southern 3m becomes a stone wall. The whole feature is depressed/dished, roughly 0.3-0.4m. Overgrown with bracken. It may be a former building which has been adapted and reused, (there are other amorphous linear features in the area) or a pen.

53 - **Linear feature** GR - NH 77965 03835

Remnants of a length of ?wall 0.8m in width and 0.2-0.3m in height, continues east as bisecting wall in feature 52, appears to predate stone wall 51 which it crosses. May be part of a building or enclosure. A curving curb edge is situated to the SE where the terrace falls away. It may be a previous boundary.

54 - **Enclosure** GR - NH 77933 03844.

Large enclosure on a NE/SW axis, measures 30m x 16m. Substantial walls rise generally to 0.5m but 1m in many places and have a spread of 2m in places, much of this is probably clearance material. 2 small mounds, 3m in diameter and 0.2m in height lie in the north section, the west one is dished at its centre.

55 - **Structure** GR - NH 779500 3839. Photo 2/23 from east

Abutting enclosure 54 and to its south this building lies on a NW/SE axis and measures 7m x 2.5m internally. The wall footings are 0.8m in width and generally 0.3m in height, although 0.5m in the SW

corner.

56 - Structure GR - NH 77936 03830. Photo 2/22 from NE

Abutting and to the south of enclosure 54, this building lies on a NE/SW axis. Overall measurements are 14m x 3m. There are 3 compartments, each measuring 3m by 2m internally. Stone footings of the walls are 0.2-0.3m high, grass covered.

57 - Structure GR - NH 77946 03826. Photo 2/24 from NE

On a NE/SW axis, this structure appears to be the one most recently occupied in that it has the most substantial walls of the whole settlement, they are reasonably well constructed and preserved. Building measures 10m x 3m internally and has no internal walls. The external walls rise to 0.6m height and 0.8m width but with tumble to inside making a 1-1.5m spread. The walls have dressed stone to the outside and very square corners. There is an entrance, 0.6m wide, in the east end of the south wall.

To the east of this building on the edge of the south facing slope there is a depression 2m in diameter and a further hollow to the south in which there is a evidence of a stone edge. This is very similar to Feature 14 and may have been a corn-drying kiln.

58 - Structure GR - NH 77927 03825. Photo 2/21 from WNW

On a NW/SE axis and measures 9m x 2.5m internally. Ruined stone walls are 0.4 - 0.5m in height and 0.6m in width, but with a spread to 1m. There is an entrance in the centre of the west wall and an internal wall dividing off the northern 2.5m.

59 - Enclosure GR - NH 77916 03828.

Depressed rectangular area, adjacent and to west of the large enclosure 54. Recessed into slope to north and with an earthbank as its west boundary. Measures 14m x 9m.

60 - Structure GR - NH 77911 03813. Photo 2/20 from north.

On a NE/SW axis, this building has several compartments and has overall dimensions of 13m x 3m. Middle compartment is 6m x 2m. Small compartment at west end is 1.5m. Walls to 0.5-0.6m in height generally and width of 0.8-1m. On the east end is a small addition 3m by 2m internally, it has an entrance in the south wall, clearance material appears to have been dumped in it. To the rear of this compartment there is a depression which is recessed into the slope and "faced" with 3 larger stones.

61 - Structure GR - NH 77901 03801. Photo 2/19 from NW

On a NE/SW axis and situated in an elevated position the ground dropping away to the west and south. Measures internally 10m by 3m. Quite substantial stone wall footings are generally 0.6-0.7m, but 1m in height in places and 0.8m in width. They appear to be "battered" in places. There may be an entrance in the south wall of the east compartment and a possible partition dividing off the westmost 2m.

62 - Corn Drying Kiln and Barn GR - NH 77890 03805. Photo 2/17 from east and Photo 2/18 "close-up" of kiln from east

On a NW/SE axis and a quite steep southeast facing "spur", the bowl to the north lying very much above the barn in the southern part of the building. The bowl is 2m in diameter and 1m in depth, it is fairly well intact although it does have some tumble internally. The barn is 4m x 2.5m internally and has substantial surrounding ruined walls 1m in width and 0.3m in height. There is an arc of stones in the NE corner of the barn and an entrance in the south end of the east wall

64 - 69 not allocated -

Improved land to north and west

Three areas of improved land lie above the settlement to the north and west. They are elevated and are separated from each other by deep meltwater channels. All gently slope to the southeast. Two are bounded or part bounded by enclosing earth and stone banks, which inevitably are made up of clearance material. The third has a good number of clearance cairns. It may be that some of the cairns and the linear clearance is as a result of more recent activity.

North area is part-bounded by linear Feature 51. In the SE part and much covered with bracken there are

several truncated linear banks, some appear to delineate areas of level ground, others run NW-SE on the steeper slopes and are perhaps attempts at offering some kind of protection from the prevailing wind. There is a recently constructed fenced enclosure. Also within the area are:

- 70 - Clearance cairn at NH 77972 04018
- 71 - Clearance cairn at NH 77998 04054
- 72 - Clearance cairn at NH 78024 04070
- 73 - Clearance cairn at NH 78003 04071
- 74 - Clearance cairn at NH 77987 04090
- 75 - Clearance cairn at NH 77919 03138
- 76 - Clearance cairn at NH 77953 04073
- 77 - Linear earth and stone bank centred on NH 77998 04035
- 78 - Linear earth and stone bank from NH 77983 04097 to NH 77884 04163
- 79 - not allocated

Middle area is completely bounded by:

- 80 - Linear Feature - an earth and stone bank. Photo 2/25 south part of wall from east. Within it are:
- 81 - Clearance cairn at NH 77744 03818
- 82 - Linear earth and stone bank, north end at NH 77747 03796

West area has no enclosing boundary. Within the area are:

- 83 - Clearance cairn at NH 77627 03670 is 3x2 0.3m in height
- 84 - Clearance cairn at NH 77647 03687 is 4x2 0.5m in height
- 85 - Clearance cairn at NH 77674 03693 is 4m diameter x 0.9m in height
- 86 - Clearance cairn at NH 77693 03701
- 87 - Clearance cairn at NH 77685 03689 is 2x1x0.3m in height
- 88 - Clearance cairn at NH 77678 03680
- 89 - Clearance cairn at NH 77709 03687
- 90 - Clearance cairn at NH 77694 03673
- 91 - Clearance cairn at NH 77672 03667
- 92 - Clearance cairn at NH 77702 03654
- 93 - Clearance cairn at NH 77740 03664
- 94 - Clearance cairn at NH 77724 03647
- 95 - Linear earth and stone bank roughly stretching between 94 and 96
- 96 - Clearance cairn at NH 77795 03618

Achadh a' Chatha - Photographs

- 1/7 - Laide 11, east part, from west
- 1/8 - Feature 50 from east
- 1/14 - Structure 1 from NE
- 1/15 - Enclosure 2 from N
- 1/16 - Structure 5 from NE.
- 1/17 - Structure 4 from SE
- 1/18 - Structure 3 from S
- 1/19 - Structure 3 from NE
- 1/20 - Clearance cairn 7 from W
- 1/21 - Structure 9 from the SW
- 1/22 - Structure 8 from SE
- 1/23 - Clearance cairn 30 from N
- 1/24 - Clearance cairn 24 from west
- 1/25 - Boundary wall 31, southern part, from clearance cairn 23 looking SW
- 1/26 - Enclosure 22 from NE
- 1/27 - Platform 20 from SSE
- 1/28 - Structure 21 from south
- 1/29 - Enclosure 19 SW retaining wall from west
- 1/30 - Enclosure 19 NW and NE walls from E
- 1/31 - Structure 18 east compartment from NW
- 1/32 - Structure 18 west compartments x 2 from N
- 1/33 - Structure 17 from NW
- 1/34 - Structure 16 from E
- 1/35 - Structure 15 from ESE
- 1/36 - Feature/?Corn-drying kiln 14 from NNE
- 2/2 - Structure 12 from west
- 2/3 - Structure 12 middle compartments from WSW
- 2/4 - Structure 43 from southeast
- 2/5 - Structure 42 from west.
- 2/6 - Structure 41 from SW
- 2/7 - Structure 40 from SW
- 2/8 - Structure 44 from south.
- 2/9 - Structure 45 from east.
- 2/10 - Structure 46 from ENE
- 2/11 - Structure 48 from the west
- 2/12 - Enclosure 47 from west
- 2/13 - Structure 49 from NW
- 2/14 - Upper settlement of Achadh a' Chatha(west) viewed from SSW
- 2/15 - Lower settlement of Achadh a' Chatha(west) viewed from west.
- 2/16 - Spring from southeast.
- 2/17 - Corn-drying kiln and barn 62 from east
- 2/18 - Corn-drying kiln 62 - "close-up" of kiln from east
- 2/19 - Structure 61 from NW
- 2/20 - Structure 60 from north.
- 2/21 - Structure 58 from WNW
- 2/22 - Structure 56 from NE
- 2/23 - Structure 55 from east
- 2/24 - Structure 57 from NE
- 2/25 - Earth and stone bank 80, south part, from east.
- 2/26 - General view of settlement of Achadh a' Chatha(west) from SE
- 2/27 - General view of settlement of Achadh a' Chatha(west) from SE

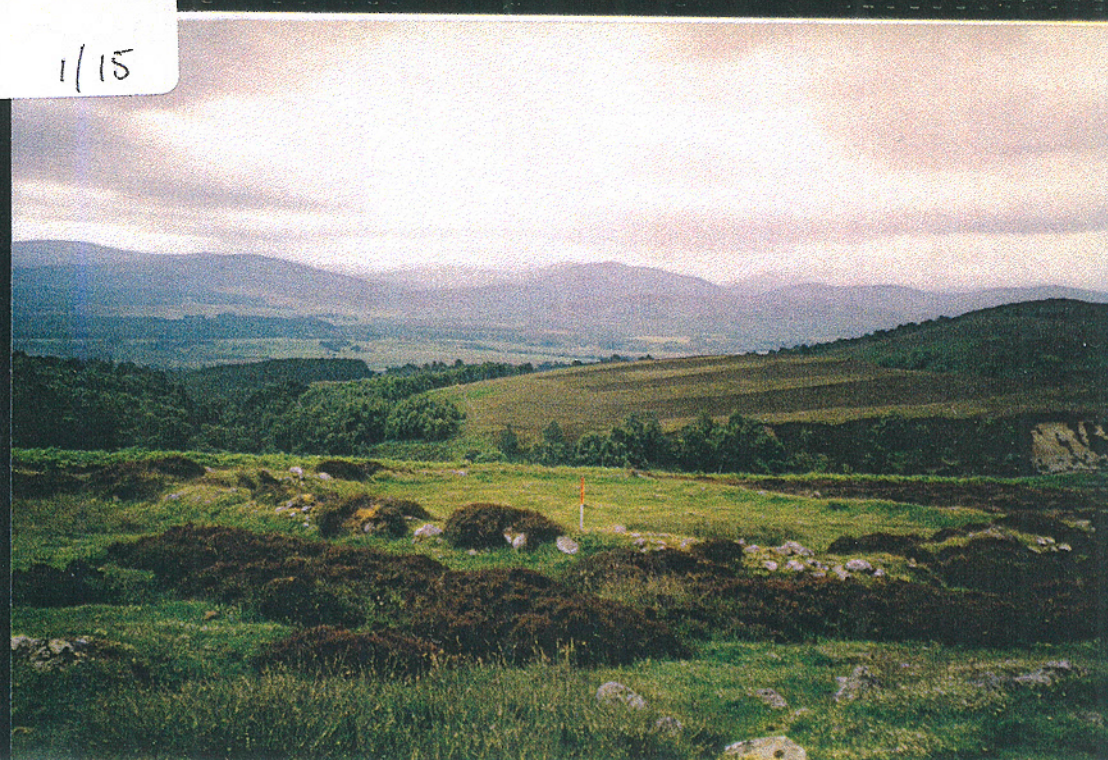
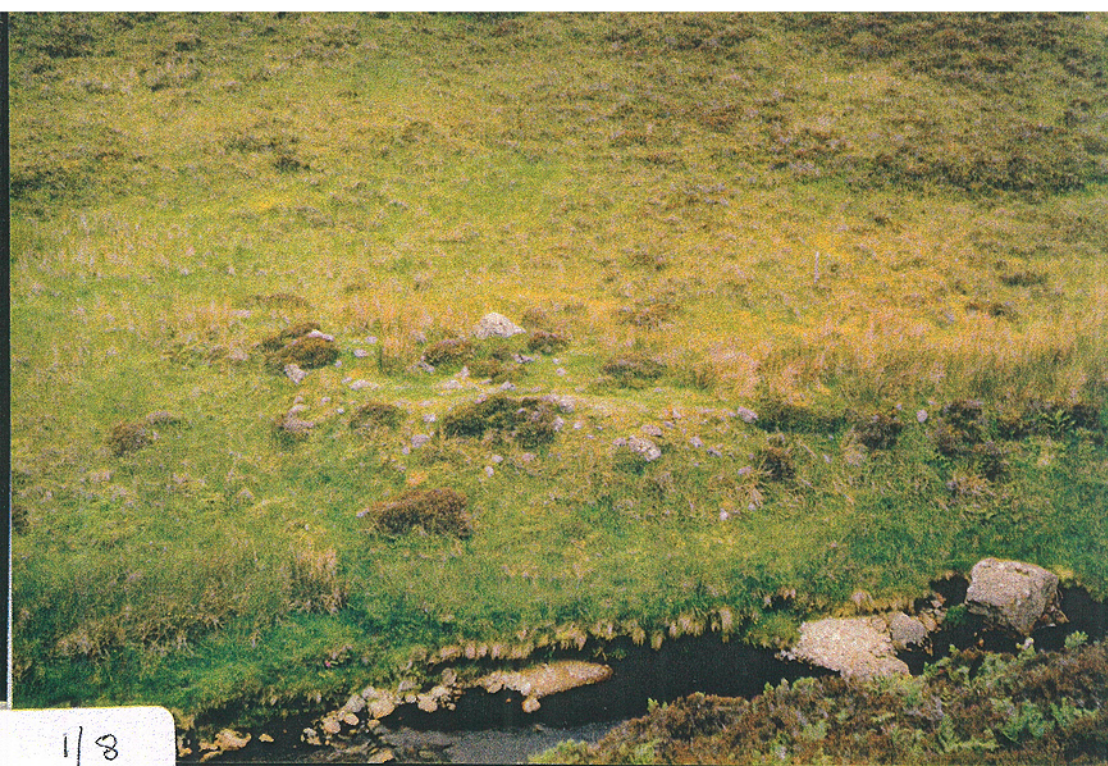


1/7

1/8

1/14

1/15





1/16



1/17



1/18



1/19



1/20



1/21



1/22



1/23



1/20~~th~~



1/25



1/26



1/27



1/28 1/29
1/30 1/31





1/32



1/33



1/34



1/35



1/36

2/2

2/3

2/4





2/5



2/6



2/7



2/8



2/9 2/10
2/11 2/12





2/13

2/14



2/15

2/16





2/17



2/18



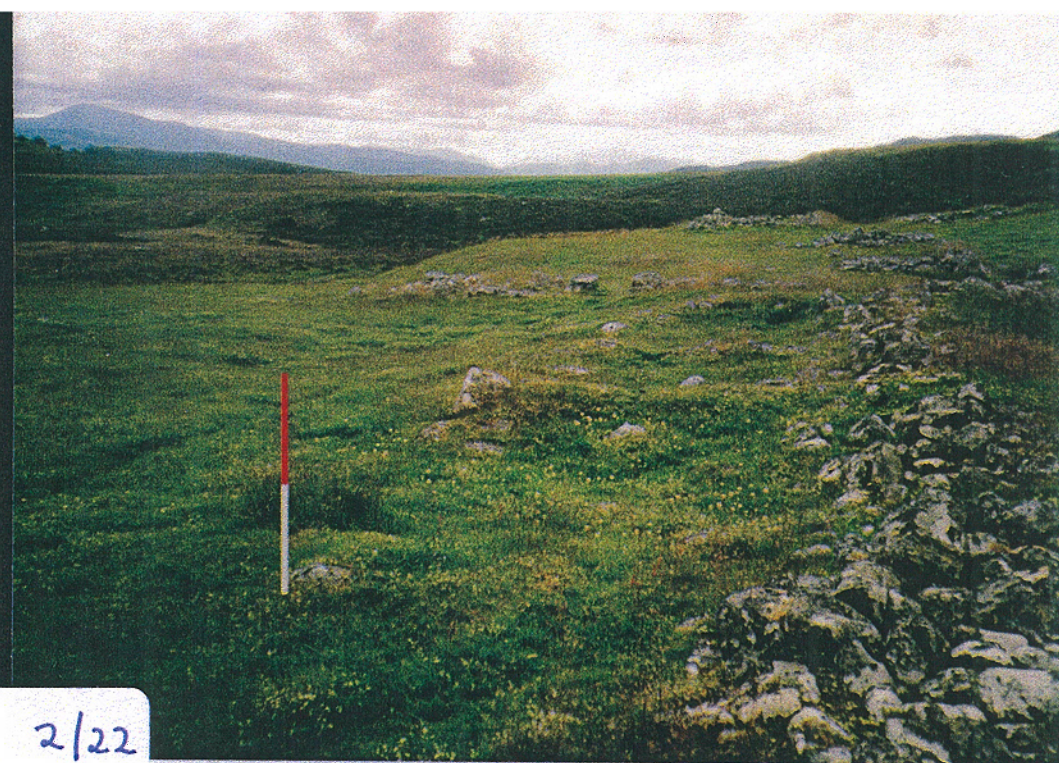
2/19



2/20



2/21



2/22



2/23



2/24



2/25

2/26

2/27



Archaeological Sites Record

Site name and SMR or NMRS No. Raitts Burn (Aachavourich)	Location Highland Region - Alvie Parish
NGR - NH 77615 04969	Site type/class - Structure

Situation and surroundings - SE facing and with a panoramic view of the Northern Cairngorm mountains this structure is situated in an exposed location at an altitude of 390m.

Description

Substantial remains of a substantial rectangular building on a NNE-SSW axis.

Internal dimensions roughly 28m x 3m

Walls - constructed of large dressed stones, courses 0.8m in width.

Remains of NW wall rise to 1m, are turfed up at the rear and have much tumble to the inside.

Remains of SE wall are roughly 0.5m high and have evidence of 3 entrances. (see sketch)

Evidence of two internal dividing walls at the west end, in the form of partial low stone footings.

On 1st Edition OS map or others - 1st Edition OS - appears as single roofed building
1872 with ? enclosure attached to east.

Sketches (overleaf)? - Yes

Photographs - From the south

Recorder, Date and Weather conditions - M.Marshall - 27.01.03. Weather - cold and windy

Comments, associated features, possible interpretation -

Possible Victorian shooting lodge?

? Unrecorded to date

Bill Ramsey remembers this as being called Achavourich. Fraser Mackintosh (1848) in his lists of people evicted in 1806 has Alexander Gordon of Achavourich of Raitts, but I could find no evidence of other habitations in the immediate vicinity - MM

Some notable dates connected with Raitts

1289 - Ruthven Castle(built ?1278) occupied by Comyns of Badenoch

13th Century - Chapel (St. Colomba) at Kingussie established, with several (?7) subordinate chapels including Raitts (St. Moluag) in neighbourhood

mid 14th Century - Alexander Stuart (Wolf of Badenoch) 4th son of Robert 2nd, - died 1405.

1452 - Badenoch, including Raitts, given to Earl of Huntly of Gordon family.

late 15th Century - Raitts, held in feu from Gordons by MacIntoshes of Borlum, held until late 18th Century.

1698 - Brigadier Mackintosh, a Jacobite, lived in typical Highland longhouse, which stood on site of the later mansion of Belleville and ?the previous site of Raitts Castle

1715 (circa) - Ruthven Barracks built

1730 - Road constructed by General Wade.

1750 - Raitts depicted on Roy map on site of Belleville House

(1771 - Plan of Gordon lands in Badenoch - SRO/West Register House CR8/195)

1776 - Raitts, McIntosh Esq. depicted on Taylor and Skinner road map on site of Belleville House

1780(circa) - planned village of Kingussie

1788 - Raitts sold to James McPherson, translator of gaelic poetry. He built an elegant mansion - Belleville.

1796 - James McPherson died, eldest son, James inherited Belleville and Raitts

1801-1806 - James McPherson cleared many people from his Badenoch properties including Raitts, some may have moved to newly created village of Lynchat.

1903 - Balavil House extensively damaged by fire - rebuilt 1904-5

[illegible]

A 9(T)
B 9:52
Khmer
4 km or 2 1/2 miles

Place Names around Raitts , Badenoch

Some notes and observations from Bill Ramsay now resident in Kyle, who was born and brought up in the area¹ (courtesy of Ann Wakeling)

1. **Raitts** (NH 791027) (now Balavil House) - "Rath" = fortified house - Rait on Gordon and Bleau maps of 1640 and Raiths on Roy map of 1750
2. **Lynchat** - Loin² a' chait³ = homestead of the sheepcote - cata is obsolete gaelic word for sheepcote, however old residents called it Baile a' chait
3. **Chapel park** (NH 787019) - Pairc an t'-seipeil, chapel dedicated to St. Maluag, also the site of an old Inn:
4. **Tullysow** - the innkeeper was called John MacPherson, died 1805, and buried in St Columbas churchyard, Kingussie. Sign on the front door read "Tadhailibh an so" = visit here or call in, hence Tully or Tilly
5. **Tillysoul House** (NH 785019) - ?demolished after last war
6. **Kerrow Dow**⁴ (NH 779023) - Ceathramh Dubh = black or dark quarter - (?Mid Rait on Gordon map of 1640 - WR)
7. **Baldow**⁴ (NH 777023) - Baile dubh = dark township - (?Mid Rait on Gordon map of 1640 - WR)
8. **Upper Raitts** (NH 774023) - (?West or Wester Rait on Gordon & Bleau maps of 1640 - WR)
9. **Creag Righ Tharailt or Harailt** (NH 791 062) - site of grave of the leader of a group of Scandinavians defeated in in a fight near Loch Insh
10. **Achaha** (NH 779038) - Achaidh a' Chadha³ = ?Field of struggle or fight, or Achadh a' Chatha³ = Field of sheep or sheepcote
11. **Acharumach** (NH 782038) - Achadh a' runnaich = Field of the marshy place
12. **Achavourich** - Achadh a' bhurich (NH 776049) = place of the roaring of the stags
13. **Lynvoan** (NH 784020) - Loinn² a' mhonadh = place of the moorland. Also Tiravoan - Tir a'mhonadh = land of the moor
14. **Tigh a' Chuirn** - Tigh na cairne or Tynacairn= house of/beside a cairn
15. **Tigh a' Chaim** (NH 773 018) - Tynacaim- house of or near the crooked burn (Allt Cealagh)
16. **Laggan** (NH 768 017)
17. **Tigh na Camahe** - reputed to be the house of the witch of Laggan
18. **Strathinlea** (?NH 840 040) - a mystery!

NOTES

¹ Bill Ramsays forebears on his mothers side were McEdwards, MacBeans and Macphersons. Angus MacEdward was a cattle drover and lived at Kerrow Meadhonach, the existing Kerrow Farm (NH 766015). He was married to the daughter of Edward Shaw Macintosh (Borum). Shaws widow was forced to sell Raitts to James Macpherson in 1788.

² In Kingussie and Badenoch, Loinn or Lainn means a dwelling or homestead, a place or enclosed land for agricultural purposes, something like "baile"

³ Gaelic dictionary definitions:

"cadha" or "catha" - a pass, a narrow, an entry (also "a steep place" in Badenoch and Strathspey)

"cath" - a battle, a fight, struggle

"cat" - a cat; heap of potatoes or corn

"c(h)ait", "cat or cata" (in Badenoch and Strathspey) - a sheepcot or pen

"caith" or "cath" - winnow corn

⁴ It is speculate that these were names used after the first clearance. The earlier maps of Bleau and Gordon 1640-54 refer to West Rait, Mid Rait and Rait. The two names, Kerrowdubh and Baldow, do not appear prior to 1803. On Fraser Mackintoshes "list" the 1801, 1802 and 1803 evictions have no mention of the two names, whilst the 1806 list has no mention of Midtown of Raitts. Could Mid Rait have been changed to Baldow and/or Kerrowdow? On close inspection the surnames of the people evicted are roughly the same ie. Macdonald, Robertson and Cattanach. After all who would refer to their homes in such derogatory terms as Baldow and Kerrowdow! A similar exercise can be done with Wester Raitts and Upper Raitts where the surnames Macpherson, Macbean and Gordon re-occur.

1848

The Ossian Macphersons

... Mr James Macpherson ... purchased Raitts in 1788 and removed most of the old possessors. These under the Borlums were very numerous, and mainly removed by the first James, while a total clearance was made by the second James Macpherson, who leased the Mains of Raitts and a considerable part of the estate in 1809 to Thomas Dott, fenar in Hilton Hill, near Cupar-Fife, at an enormous rise of rent, viz., £360 forehand. A list of the people removed by Macpherson in 1801-1806 will be found as an appendix.

To Croftmaluack was assigned the name of Chapel Park. (Mo-luag ?site of early chapel??)

PARISH OF ALVIE

450) Evictions carried out by James Macpherson the younger in 1801, 1802 and 1806:-
1801

1. John Macpherson, Tillysoul of Raitts..
2. Ewan Macdonald, Easter Raitts.
3. Duncan Robertson, Midtown of Raitts.
4. John Macpherson, Achaha.
5. Donald Davidson, Acharunach
6. Jas. Mackintosh, Croftroy.
7. John Mackay, Croftduach of Benchar.
8. Alexander Gordon, Newtown.

1802 & 1803: Phoness, Benchar, Clune and Raitts.

34. Duncan Macbean, Wester Raitts.
35. John Macpherson, "
36. John Gordon "
37. Evan Macdonald, Midtown of Raitts.
38. Patrick Macdonald, "
39. Iachland Macdonald, "
40. Elspet Stewart, "
41. Donald Davidson, "
42. John Cattnach, "
43. Wm. Macbean, Easter Raitts.
44. Wm. Macpherson, Tigh-na-cairne.
45. Donald Stewart, Tullysoul House.

1806: Phoness, Etterish, Benchar, Clune and Raitts.

31. John Macdonald, Upper Raitts.
32. Christian Cattnach, Baldhu of Raitts.
33. Duncan Robertson, "
34. Marjory Macdonald "
35. Isobel Gordon, Kerrow of Raitts.
36. Jean Cruikshank, Strathinlea of Raitts.
37. Christian Macbean, Tyravoan of Raitts.
38. Alexander Gordon, Achavourich of Raitts.

Another list: Invernahaven, Phoness, Etterish, Clune, Benchar, and Raitts:

50. Alex. Macpherson, Upper Raitts.
51. Ewen Macpherson, "
52. Donald Davidson, "
53. Duncan Macbean, "
54. John Gordon, junior, "
55. John Gordon, senior, "
56. Wm. Macpherson, Tynacairn of Raitts.
57. Iachlan Macdonald, Baldhu of Raitts.
58. Donald Davidson, "
59. Evan Macdonald, "
60. Peter Macdonald. "
61. Elizabeth Stewart, "
62. Alex. Macpherson, "
63. John Cattnach, "
64. Robert Warrand, Kerrowdhu of Raitts,
65. Paul Macbean, Tillysoul of Raitts.

Total heads of families in 1806, 103, probably 500 souls. (This will mean the whole list)