

**Field Survey at Achederson/Auchederson
and Allt na Crìonaiche
(Cul Beag or Allt Goibhre)
2015**

Meryl Marshall

NoSAS

2021

Achederson/Auchederson Prehistoric Sites – hut circles, field system etc (alternative name Cul Beag) GR centred on NH 460 503, HC HER: MHG7782, Canmore ID: 12481

NOSAS members carried out a walkover survey in Aug 2015. It followed a systematic programme of annual “muirburn” which had exposed new features - see plan. All the previously recorded hut circles were checked and updated, the identifying letters here are those of the 1973/1989 survey. One new hut circle and one possible new hut circle were located along with numerous clearance cairns, burnt mounds and several short stretches of “trailing” turf banks or boundaries, these were given letters (not on plan) continuing from the previous ones.

Features previously recorded:

Hut Circle A – GR centred on NH 45610 50178 heathery platform, 10m in diameter, on a small spur

Hut Circle B - GR centred on NH 45618 50196 heathery platform, 10m in diameter, recessed into the slope a few metres to the north of A

Hut Circle C – This hut circle was not clearly identified, it may be centred on NH 45646 50252 where there is an indistinct heathery platform

Hut Circle D – GR centred on NH 45794 50149 heathery platform, 10m in diameter, a few metres to the northwest of “E”

Hut Circle E – GR centred on NH 45816 50141 heathery platform, 10m in diameter, on a small knoll

Hut Circle F – GR centred on NH 45857 50262 well defined hut circle surrounded by stone bank. It has an internal diameter of 10m and an entrance in ESE

Hut Circle G – GR centred on NH 45872 50294 a small heather covered hut circle with well-defined surrounding bank measuring 8m internal diameter

Hut Circle H – GR centred on NH 46099 50294 Well preserved hut circle surrounded by heather covered turf and stone bank up to 0.4m in height. Internal diameter is 10m

Hut Circle J – GR centred on NH 46318 50182. Well preserved hut circle with grassy internal area measuring 10m in diameter, this is surrounded by turf bank which is more upstanding in its west part where it is 0.5m in height internally/1m externally. A possible entrance is seen in the SE part.

Hut Circle K - GR centred on NH 46322 50359. A level platform, 10m in diameter, on a heather covered knoll

Hut Circle L – GR centred on NH 46443 50426. A grassy platform 12m internal diameter edged by turf bank has occasional boulders on its east side.

M – This feature, originally thought to be a hut circle, but in 1989 as a possible enclosure was not found. However several clearance cairns, GR centred on NH 46488 50398, and a possible old track or “hollow way” were identified on a steep SE facing slope.

Features previously unrecorded (the many clearance cairns are not included):

(N) A previously unrecorded hut circle GR centred on NH 46268 50550 was identified following “muirburn”. It sits above the track to the NE of the above group and comprises a platform of diameter 8m, with vestiges of stone and turf banks surrounding. There is no evidence of an entrance. A field system in the form of several clearance cairns lies immediately to the SE.

(P) A further possible hut circle, GR centred on NH 45555 50128, takes the form of a circular grassy platform 10m in diameter.

(Q) Burnt mound GR centred on NH 46060 50190 – the larger lower burnt mound of two (?three) south of hut circle H. It is oval (kidney-shaped) aligned NW-SE parallel to a small water course and measures 20m x 8m and is 1-1.5m in height. A depression in the upper NE part is 1m deep x 2.5m diameter. Grossly heather covered

(R) Burnt Mound - GR centred on NH 46052 50207 - the smaller upper burnt mound a few metres to the north of 1 measures 10m x 6m x 1m height and has a small hollow on its east side.

A knoll to the east may have been part of this feature but it has become separated from it by the small water course. Burnt heather covers the feature

(S)Possible Burnt Mound - GR centred on NH 45745 50126

(T)Possible Burnt Mound – GR centred on NH 46353 50556. This one associated with new hut circle on north side of track

(U) Bank/Boundary - at the east end of the area and close to hut circle K, NH 46347 50399 (N end) to NH 46354 50382 (S end) A curving turf bank 20m in length.

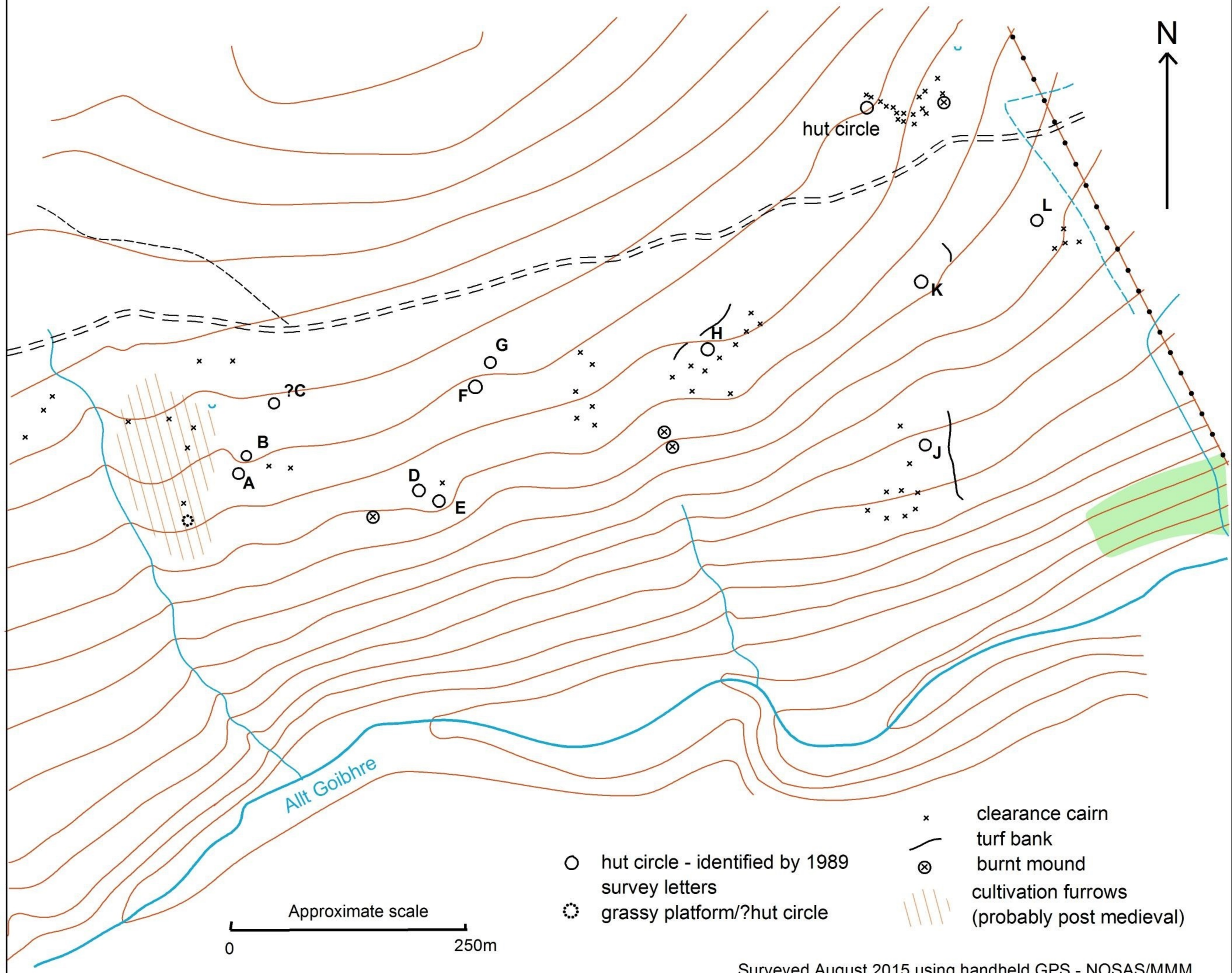
(V) Bank/Boundary At the SE corner of the site and close to hut circle J, NH 46344 50215 (N end) to NH 46355 50121 (S end) and aligned N-S this substantial turf bank is about 110m in length

(W) Bank/Boundary At the centre of the site and close to hut circle H, NH 46125 50343(NE end) to NH 46066 50287 (SW end) this well-defined turf bank in 2 sections is about 50m in length

MMM 17.06.2021

Cul Beag/Achederson (Allt Goibhre, Muir of Ord)

Prehistoric sites - GR centred on NH460503 (Canmore ID 12481, HER ID MHG 7782)



Surveyed August 2015 using handheld GPS - NOSAS/MMM



New hut circle (N) recorded Aug 2015 looking SE



Field system of clearance cairns associated with new hut circle (N) at Cul Beag, looking N

Cul Beag/ Allt na Crionaiche Post medieval Features

MM June 2021

NOSAS members carried out a walkover survey in Aug 2015. The only feature that had been recorded previously was the illicit still bothy (Canmore ID 351708)

Site Number	Site type	Easting	Northing
1.	Farmstead	245173	849762
2.	Enclosure	245250	849710
3	Enclosure	245230	849706
4.	Building	245213	849702
5.	Building	245217	849855
6.	Farmstead	245330	849808
7.	Enclosure	245353	849750
8.	Cultivation remains	245550	850200
9.	platform	245556	850128
10.	Still bothy	245044	849986
11.	shielings	245060	849860
12.	Earthbank	245140	849580
13.	?still bothy	244861	849580

The remains of two farmsteads and associated enclosures are 3 kms west of Aultgowrie Bridge on the south facing slope above the Allt Goibhre at an altitude of 230m. The main farmstead (features 1 to 4 below) is close to the Allt na Crionaiche, the second one (features 6 and 7) is much more wasted and on a grassy spur 100m to the NE. Neither appears even as ruins on the First Edition OS map. 400m to the NE of the farmsteads on the west edge of the prehistoric hut circle site and at an altitude of 290m there is an area of post med cultivation remains (feature 8) which is seen particularly well on satellite images. 200m to the NW of the farmsteads there is a group of shielings and 300m to the N close to the Allt na Crionaiche the remains of an illicit still bothy (10 below and previously recorded); this is possibly not associated with the farmsteads. In addition a further still bothy is close to the Allt Cruach na Lithe 200m to the west

- 1. Farmstead** - GR centred on NH 45173 49762 – stone footings of a rectangular building aligned SW-NE within the main enclosure. The building measures 8mx2m internally and the walls, with squared corners, are double faced, generally 0.5m thick (but 1m at SW end) and of height 0.5m – 0.8m. Two compartments are indicated by a change in level, the compartment at the west end being higher. An entrance, 1m in width, is seen in the SE wall and a further entrance at the west end. The footings of a crudely constructed outshot abuts the SW corner, this is 3m x 2m internally and has rounded corners at its south end
- 2. Main Enclosure** – GR centred on NH 45250 49710 This large sub-rectangular grassy enclosure measures roughly 220m x 60m, it is on a NW-SE alignment and a gently south facing slope. It is surrounded for the most part by a substantial turf and stone wall, to the west and south sides of the enclosure steep slopes drop to the burn/river. The main farmstead sits within the enclosure at the north end and towards the south there is a small enclosure and a small building.
- 3. Small Enclosure** – GR centred on NH 45230 49706 this sub-rectangular enclosure, measuring roughly 13 x 11m, is within the main enclosure and abuts its east wall
- 4. Building** - GR centred on NH 45213 49702 stone footings of a small building measuring 4m x 2m internally. The footings are up to 0.5m high there is an entrance in the SE wall. Evidence of a partition divides the internal area into two compartments each roughly 2m x 1.8m
- 5. Possible building** - GR centred on NH 45217 49855 a grassy platform on a knoll to the NE of the farmstead may have held a timber building. The platform is roughly circular and 10m in diameter, the southern edge of the platform has been built out and has a sloping revetted stone face which is clearly not natural
- 6. Farmstead** GR centred on NH 45330 49808 at the centre of an area of improved land on top of a grassy knoll this rectangular building aligned SE-NW has low turf and stone footings. The building measures 7m x 2.5m and the footings are up to 0.3m high.
- 7. Enclosure wall** – GR centred on NH 45353 49750 (bend) An L shaped alignment of stones indicate a wall which has at one time surrounded the grassy improved area on its west and south sides. The walls are roughly 75m and 44m in length.
- 8. Cultivation remains/furrows** – GR centred on NH 4555 5020 A rectangular area measuring roughly 200m x 100m on a south facing slope has curving furrows varying at intervals of 3m to 5m, seen particularly well following muirburn. Several large clearance cairns are within the area and towards the south a grassy platform (9) may have held a timber building
- 9. Platform** – centred on NH 45556 50128 A grassy level platform 10m in diameter

- 10. Still Bothy, Allt na Crionnaiche** – GR NH 45044 49986 The remains of an illicit still bothy are located at an altitude of 270m on the east bank of the Allt na Crionaiche, some 3kms west of Aultgowrie Bridge. The bothy has been recessed into the bank of the gully and occupies an area of 5m². It is of dry stone construction and comprises 3 parts; an internal chamber measuring 1.8m², a passageway to the south with an entrance into the chamber to the rear/east and an external platform next to the burn on the west. The remains of the walls are between 0.5m and 0.7m in height although the rear wall has stone facing to a height of 1m in the NE corner.
- 11. Group of Shielings (alternative name Allt Goibhre or Allt na Crionaiche)** GR centred on NH 4506 4986 on the south facing slope there is a group of 7 shielings (one is on the east bank of the burn).
Shieling 1 – GR NH 44990 49984 Situated on the west bank of the Allt na Crionaiche in a grassy patch on a south facing slope at an altitude of c280m, this shieling is discernible only by two heather covered linear stone footings enclosing an internal area of 3m x 1m and on an E-W alignment.
Shieling 2 – GR NH 45072 49849 Recessed into an E facing slope at an altitude of c250m, this shieling is on a NE-SW alignment and measures 3m x 1.2m internally. It has a turf and stone bank 0.3m in height on its SE side; there is an entrance at the centre of this wall.
Shieling 3 – GR NH 45090 49788 alt 244
One of a group of 5 shielings, 4 of which are situated on the west bank of the Allt na Crionaiche in a grassy relatively fertile area at an altitude of c245m. It comprises a slightly raised oval platform 0.2m in height on an E-W alignment which is of stone and turf composition and measures 4.5m x 3m
Shieling 4 – GR NH 45107 49774 alt 241 One of the group of 5 shielings, this shieling comprises a raised oval platform of stone and turf on a N-S alignment measuring 5m x 3m
Shieling 5 – GR NH 45135 49780 This is the only one of the group of 5 shielings which is situated on the east bank of the Allt na Crionaiche. The building is on an E-W alignment and is much more substantial than the other shielings having 2 compartments. The largest W compartment has turf and stone walls 0.4m in height and 1 m thick surrounding an internal area 4m x 2m; the corners are rounded and there is an entrance in the south wall. The outshot on the east side has rough stone footings enclosing an internal area of roughly 1.5m².
Shieling 6 – GR NH 45094 49793 alt 240 The stone footings of this rectangular shieling on an E-W alignment are barely discernible and more distinct at its east end. The internal area is roughly 5m x 2m.
Shieling 7 – GR NH 45096 49745 alt 235 The most southerly of the group of 5 shielings on the west bank of the Allt na Crionaiche, this structure appears as a low oval mound on an E-W alignment measuring 5m x 3m. It has a “dished” centre and is covered in grass and heather.
- 12. Earthbank** – GR NH 45164 49568 (S end) to NH 45116 49599 (N end) A low turf and stone bank roughly 60m in length runs NW from the edge of the steep slope above the Allt Goibhre. It may continue northwards but deep heather made this difficult to determine; it may well be a boundary wall of the “Improvement Period”
- 13. Probable Still Bothy, Allt Loch Cruach na Lithe** – GR NH 44861 49580 At an altitude of 240m this rectangular structure is at the foot of a steep slope and on the west side of the burn being just 1 to 2m distant from it. The structure is on a NW-SE alignment, measures roughly 8m x 3m overall and is bounded on its east side by a moss covered stone edge. The structure comprises two parts; the NW part is a level mossy platform with evidence of stones/?paving underneath and the SE part is a small crudely built pen probably of more recent origin. This pen is circa 2m x 1.5m overall with the internal area of just 1m x 0.5m; the north wall being slightly more substantial and 0.8m in height.

Cul Beag/Allt na Crionaiche (Allt Goibhre, Muir of Ord)

Post Medieval sites - centred on NH 452 498

