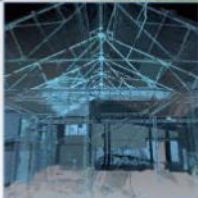


Dornoch North, Phase 2, Highlands: Archaeological Evaluation Data Structure Report

AOC Project Number: 70397

May 2019



Dornoch North, Phase 2, Highlands: Archaeological Evaluation Data Structure Report

On Behalf of:	Springfield Properties PLC Alexander Fleming House 8 Southfield Drive Elgin Moray IV30 6GR
National Grid Reference (NGR):	NH 79712 90220
Planning Reference	Pre-planning
AOC Project No:	70397
Prepared by:	L. Stirling and J. Gallacher
Illustrations by:	L. Demay, L. Stirling and L. Teufel
Date of Fieldwork:	15 th April – 3 rd May 2019
Date of Report:	6 th May 2019
OASIS No.:	aocarcha1-351235

This document has been prepared in accordance with AOC standard operating procedures.

Authors: Lindsey Stirling

Date: 6th May 2019

Approved by: Mary Peteranna

Date: 24th May 2019

Report Stage: Final

Date: 30th May 2019

Enquiries to: AOC Archaeology Group
The Old Estate Office
Rosehaugh Estate
Avoch
IV9 8RF

Mob. 07972 259255
Tel. 01463 819841
E-mail inverness@aocarchaeology.com



www.aocarchaeology.com

Contents	Page
List of illustrations.....	2
List of plates.....	2
List of appendices	3
Abstract	4
1.0 INTRODUCTION	5
2.0 BACKGROUND	5
3.0 OBJECTIVES	8
4.0 METHODOLOGY	8
5.0 EVALUATION RESULTS.....	11
6.0 CONCLUSION AND RECOMMENDATIONS	17
7.0 REFERENCES	17

List of illustrations

- Figure 1: Site location map
 Figure 2: Location of the evaluation trenches
 Figure 3: Location of the archaeological features
 Figure 4: Location of the archaeological features
 Figure 5: Location of the archaeological features
 Figure 6: Section drawings
 Figure 7: Section drawing of feature [3404]
 Figure 8: Pre-excavation plan of the cists
 Figure 9: Pre-excavation plan of the cists after removal of capstones
 Figure 10: Post-excavation plan of the cists
 Figure 11: Section drawings of the cists
Figure 12: Image of a photogrammetry model of the Bronze Age cists

List of plates

- Plate 1: The development site ahead of trenching
 Plate 2: Trenching in progress across the development site
 Plate 3: NNE-facing section of [601]
 Plate 4: NW-facing section of [602]
 Plate 5: SSW-facing section of [801]
 Plate 6: E-facing section of [2601]
 Plate 7: W-facing section of [3201]
 Plate 8: SW-facing section of [4801]
 Plate 9: W-facing section of slot through [3404]
 Plate 10: Slot through (4901)
 Plate 11: NW-facing section of [5001]
 Plate 12: View of [5002]
 Plate 13: Pre-excavation of the cists
 Plate 14: Cists after capstones removed
 Plate 15: Cists after rubble removed
 Plate 16: Cists after backfill removed
 Plate 17: Cist 1

Plate 18: Cist 2
Plate 19: Corner construction of cist 1
Plate 20: Corner construction of cist 2
Plate 21: Post-excavation view of cists
Plate 22: Trench 10, facing N
Plate 23: Trench 26, facing N
Plate 24: Trench 32, facing S
Plate 25: Trench 35 (mid), facing SSE

List of appendices

Appendix 1: List of Trenches
Appendix 2: List of Context
Appendix 3: List of Site Photographs
Appendix 4: List of Samples
Appendix 5: List of Drawings
Appendix 6: List of Small Finds

Abstract

This report details the findings of an archaeological evaluation carried out at a residential development site to the north of Dornoch, in the Highlands. The evaluation was required because there was potential for buried archaeological remains to be present on the site.

Fieldwork was carried out between 15th April and 3rd of May where 42 trenches were excavated. Twelve archaeological features were identified, comprising several pits and linear features and a large pit or ditch.

The site of two Bronze Age cists, which had been previously excavated in 1938, were uncovered and recorded prior to their loss by the development works..

1.0 INTRODUCTION

- 1.1 A 10% archaeological evaluation was required by Springfield Properties PLC in advance of the proposed residential development at Dornoch North, Phase 2 (pre-planning). The requirement arose due to the location of the development site in an area with potential for the survival of buried archaeological deposits.
- 1.2 The site lies within the administrative area of the Highland Council, which is advised on archaeological matters by Kirsty Cameron, Archaeologist, Historic Environment Team, Highland Council. A programme of trial trenching across the site was recommended in keeping with the policies outlined in *Scottish Planning Policy* (2014) and *PAN 2/2011 Planning and Archaeology* (2011) in order to record the extent and significance of any archaeological remains which may be present within the development area.
- 1.3 The fieldwork was carried out between 15th April and 3rd May 2019 where a total of 42 trenches were excavated. Twelve archaeological features were identified, comprising several pits and linear features and a large pit or ditch. . The location of two Bronze Age cists, which had been previously uncovered in 1938, was identified. As part of the fieldwork, excavation and recording of the cists was carried out.

2.0 BACKGROUND

- 2.1 The proposed development site is located to the north of Dornoch, with the phase 2 area centred on NGR NH 79712 90220 (**Figure 1**). It comprises a sloping, open field bounded by the Dornoch Burn on the west and Station Road to the east (**Plate 1**).
- 2.2 The development site is located in an area of archaeological potential. At the north end of the site, two Bronze Age short cist burials (Highland HER No. MHG11733) were uncovered. The cists contained the remains of inhumation burials and a food vessel, barbed-and-tanged flint arrowhead and fragment of a Bronze pin in one of the graves.
- 2.3 Numerous small finds have been recovered in the field during metal-detecting on the site (Highland HER Nos. MHG47830, MHG29373, MHG24754). Other small finds of prehistoric and medieval date have been discovered in the fields surrounding the development area, in particular over 250 medieval and late medieval coins found 'in the fields north of Dornoch' are held by National Museums Scotland
- 2.4 Phase 1 of the development required archaeological excavation. This was carried out in 2015 by AOC Archaeology to the north side of the phase 2 site. A number of significant archaeological features were uncovered including stone-lined storage pits, multiple hearths, a palisaded enclosure, post-holes, a shell midden and a huge circular pit. Finds from these features included worked stone tools, animal bone and ceramic fragments. Post-excavation analysis of the results is indicative of an Iron Age settlement, with evidence of post-built structures, overlying Neolithic activity. The 2015 excavations were thought to only represent a small part of a larger prehistoric settlement and thus there is high potential for further archaeological remains to be uncovered in the surrounding landscape .

- 2.5 The west side of the phase 2 development area and surrounding fields to the west have been subject to previous archaeological investigations undertaken by Stuart Farrell (2007), including a desk-based assessment, geophysical survey and partial trial trenching evaluation. Trial trenching uncovered a number of features across the site, including a post-hole, a small hearth, a deposit of shells and a wall. Geophysical survey was also carried out alongside this fieldwork by Archaeological Services WYAS (2007). A number of anomalies were identified, most of which were interpreted as geological deposits. In particular two rectilinear anomalies may indicate enclosures. Some of these features were identified adjacent to the northwestern side and partially running into the southwestern side of the phase 2 area.
- 2.6 Previous metal detector surveys have also been undertaken within the fields of the phase 2 development and surrounding area. Over 500 objects were found during metal-detecting and field-walking, which dated from the Roman period to modern day, most of them being predominantly 19th century in date.



Plate 1: The development site ahead of trenching

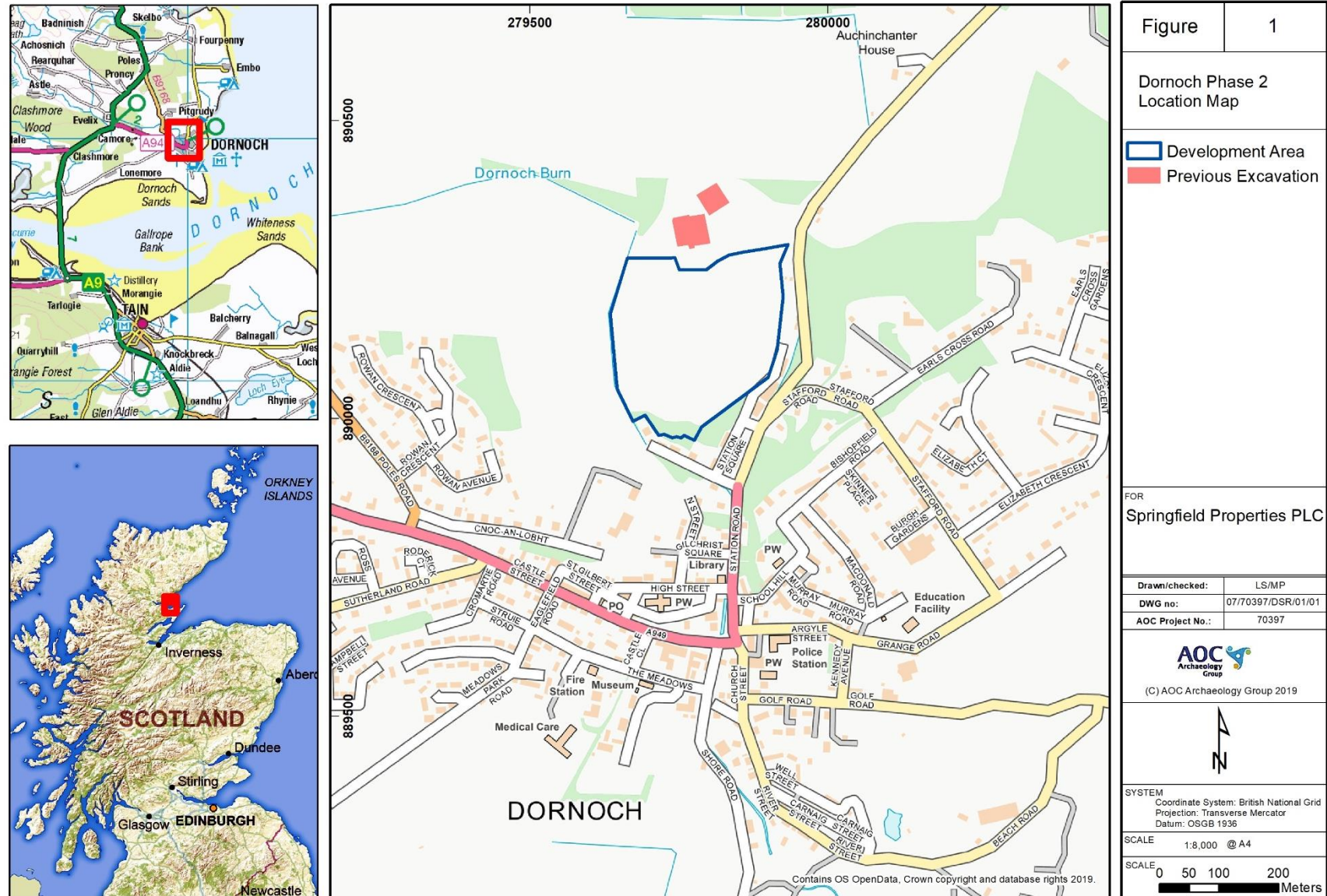


Figure 1: Site location map

3.0 OBJECTIVES

- 3.1 The *Chartered Institute for Archaeologists* (CIfA) defines an archaeological evaluation as ‘a limited programme of non-intrusive and/or intrusive fieldwork which determines the presence or absence of archaeological features, structures, deposits, artefacts or ecofacts within a specified area or site on land...field evaluation defines their character, extent, quality and preservation, and enables an assessment of their worth in a local, regional, national or international context as appropriate (2014).’
- 3.2 The aims of the archaeological works were:
- i) To establish the presence or absence of archaeological remains within the proposed development area
 - ii) To remove by hand any overburden in order to expose the archaeological deposits
 - iii) To excavate, sample and record any features or to propose arrangements for their safeguarding, where possible
 - iv) To sample deposits for post-excavation work, including environmental analysis and dating
 - v) To make recommendations for further measures necessary to mitigate the impact of the development
 - vi) To make recommendations for post-excavation work

4.0 METHODOLOGY

- 4.1 An archaeological trial trenching evaluation of 10% of the proposed development area was undertaken. The area for phase 2 comprised an open, sloping, agricultural field measuring approximately 86,225m², however buried and overhead services in western side of the field meant that not all of this area was available for trenching. Part of the phase 2 area to the north had also been previously stripped for use as a site compound for the phase 1 works. As such the original trench plan was altered and trenches 1-5 and 42-47 were unable to be excavated. Additional trenches (49-53) were added in some parts of the field in order to target geophysical anomalies or to evaluate the extent of archaeology in the area around the Bronze Age cists. A total of 42 trenches measuring approximately 5,800m² were excavated, comprising 10% of the final area of 54,000m² available for trenching (**Figure 2; Plate 2**).
- 4.2 Trenches were excavated under the supervision of an archaeologist using a mechanical excavator with 2m wide straight-edged bucket in order to establish the presence or absence of archaeological remains. Trenches were laid out as per the proposed trench plan set out in the *Written Scheme of Investigation* (Stirling 2019), with some alterations as mentioned above. Some trenches were expanded around possible archaeological features in order to establish the full extent of the feature.
- 4.3 All features of archaeological significance were excavated by hand in order to establish the date, nature, extent and state of preservation of the deposits. Archaeological features and deposits were drawn at a scale of 1:20 and section drawings were drawn at a scale of 1:10. All significant archaeological features were sampled, in the event post-excavation analysis is deemed necessary.

- 4.4 The location of the trenches and all archaeological findspots and features were plotted using a Trimble Geo-XR Rover capable of centimetre accuracy. The archaeological monitoring was recorded using high resolution digital photography in order to record the process as well as any archaeological features or finds of interest.
- 4.5 Excavation of the location of the Bronze Age cists was undertaken. The area was de-turfed by hand in order to expose the extent of the archaeological remains and the backfill material was emptied out from the interior of the two cists. Detailed section and plan drawings were drawn at a scale of 1:10 and 1:20 respectively. Each of the main stone slabs were labelled per plan drawings for use in reconstruction of the monument if necessary. The excavation was recorded using written records and high-resolution digital photography. Environmental samples were taken from the base of each cist.



Plate 2: Trenching in progress across the development site

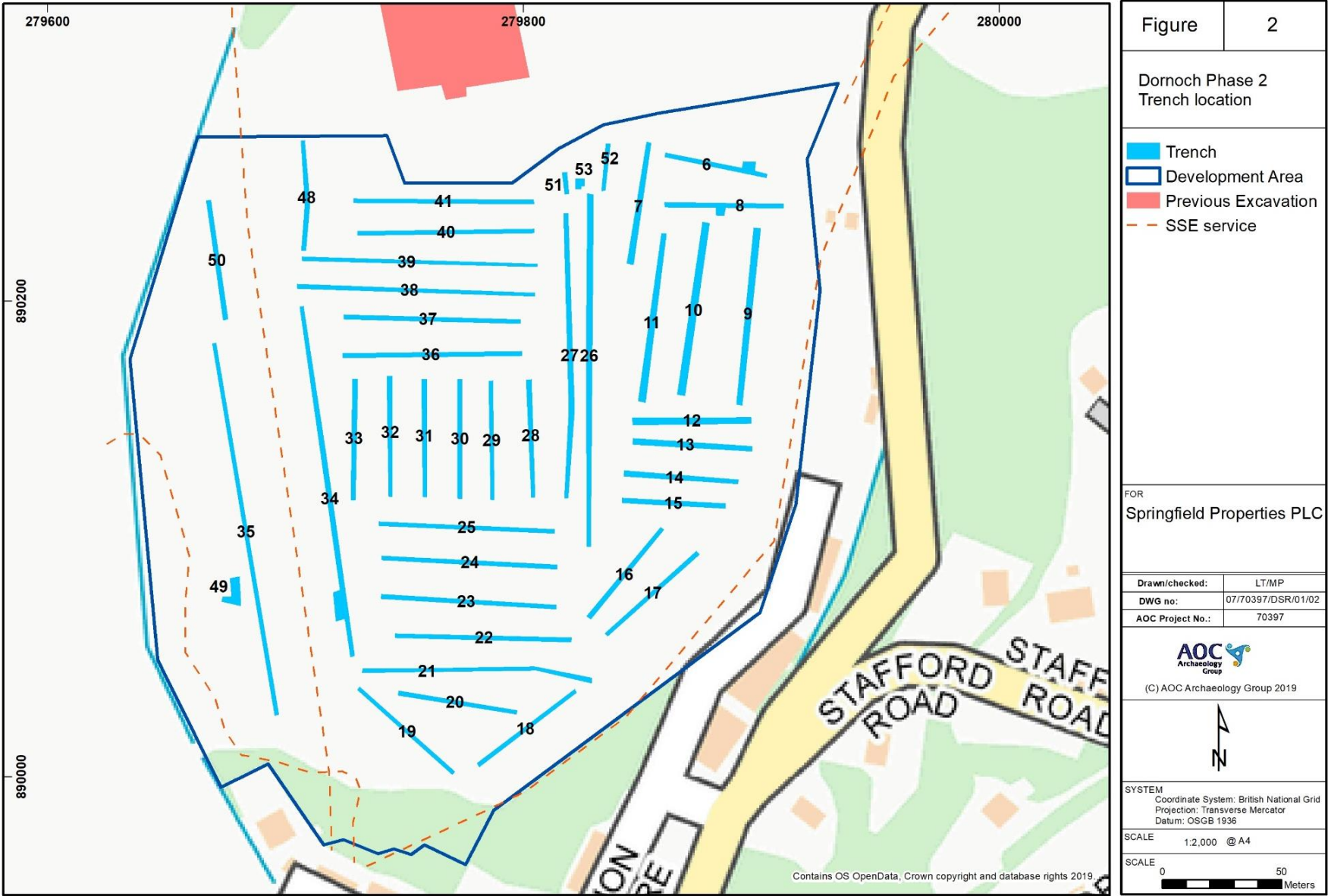


Figure 2: Location of the evaluation trenches

5.0 EVALUATION RESULTS

- 5.1 The archaeological evaluation was carried out between 15th and 24th April 2019. Weather conditions were sunny and dry and on the whole ground conditions and visibility were good. Forty-two trenches were excavated.. Topsoil across the site was loose, mid grey-brown, silty sand with frequent small stones. Topsoil depth varied across the site from 0.2m at the top of the slope and up to 1.3m deep in some places at the base of the slope. Subsoil across the site varied, but consisted predominantly of a mid-orange-brown, loose, silty sand with frequent stones (**Plates 22-25**). The details of the individual trenches can be seen in **Appendix 1**.
- 5.2 Twelve archaeological features were identified during the evaluation (**Figures 3-5**). These consisted of four pits [601], [602], [801], and [2601], a possible fire-pit [3201], a possible posthole [4801], a surface deposit (4901) containing struck flint fragments, a large sub-oval pit or ditch [3404] of unknown function, and two linear features [5001] and [5002] of probable recent origin. Two Bronze Age cist structures [003] and [004], which had been previously uncovered in 1938, were also excavated and recorded. Several other rubble drains and plough marks were also noted in trenches across the site.
- 5.3 Pits [601], [602] and [801] were found in close proximity to each other on the east side of the site (**Figures 3 & 6**). Pit [601] comprised a sub-oval pit with steep sides and a flat base, measuring 1.40m by 1.30m and up to 0.20m deep (**Plate 3**). Pit [602] comprised a sub-rectangular cut of similar size, with gently sloping sides and an undulating stony base (**Plate 4**). Both pits were filled by a mid-grey, loose sand with frequent small stone inclusions (fills (603) and (604)). The fill of pit [601] also contained some charcoal flecks and three ceramic sherds (SF10), of probable 19th/20th century date, which could be intrusive material from the ploughsoil. Feature [801] in Trench 8 consisted of a sub-oval cut measuring 1.40m by 1.1m and up to 0.35m deep, with steep sides and a flat base (**Plate 5**). It was filled by a mid-grey sand (802) of medium compaction. The date and function of these pits is unclear, however given their proximity and similarity they are probably related to each other.
- 5.4 Another sub-oval pit [2601] was identified in Trench 26 along the top of the slope, measuring 1.10m by 1.00m and up to 0.35m deep (**Figures 3 & 6; Plate 6**). The cut comprised steeply sloping sides and an undulating base and was filled by a mid-grey-brown silty sand (2602) with frequent large stone inclusions. The date and function of this pit is unclear, although some of the large stones appear to have been deposited in an upright position, which could suggest the pit formed a post-hole containing packing stones
- 5.5 Pit [3201] was uncovered in Trench 32 (**Figure 5-6; Plate 7**). It comprised a sub-oval pit with steep sides and a flat base, measuring 0.8m by 0.75m and 0.3m deep. It was filled by two distinct fills: an upper mid-grey brown silty sand with frequent inclusions of large stones (3202); and a lower black-brown silty sand with an extremely high concentration of charcoal (3203). The rich basal charcoal layer indicates that the feature comprised a fire-pit or hearth.
- 5.6 Feature [3404] in Trench 34 comprised a large sub-oval feature (either the terminus of a large linear or part of a large pit) measuring at least 5.70m north-south by 5.80m (**Figure 5 & 7; Plate 9**). The full extent of the feature could not be exposed due to the proximity of the overhead power lines. Slots were excavated across the feature revealing a series of fills. The upper fill (3407) comprised a distinct layer of loose, dark grey-brown, silty sand, which

contained fragments of charcoal, bone and shell, as well as a few small sherds of possible medieval pottery (SF3). Below this were mixed soil layers, which closely resembled the natural subsoil in the surrounding trench, making identification of the base of the feature very difficult. These layers consisted of very clean deposits of fine orange-brown sand (3409) and mixed deposits of pale orange-brown clay with stony lenses of dark grey-brown silty sand (3408). At 0.9m deep, a more consistent layer of pale clay was encountered and interpreted as the base of the feature. These mixed layers below (3407) may relate to different backfill events, either natural or purposeful, during the use of the feature. The function of this feature is unclear but the inclusions of medieval pottery are of archaeological interest.

- 5.7 A possible posthole [4801] was discovered in Trench 48 (**Figures 4 & 6; Plate 8**). This was a small sub-circular pit measuring 0.5-0.6m diameter and up to 0.27m deep with steep sides. It was filled by mid-brown silty sand (4802) containing small fragments of possible charcoal and burnt bone. The upper edge of the cut appeared to be lined by large sub-oval stones.
- 5.8 Trench 49 was excavated in order to investigate a geophysical anomaly picked up during a previous phase of work (**Figure 5; Plate 10**). No clear archaeological features were identified in this trench except a shallow hollow in the clay subsoil filled by topsoil-like dark grey sandy silt (4901). The hollow, measuring 2.5m by 1.6m, is probably natural, however it contained three flint fragments (SF12) indicative of prehistoric human activity in the area.
- 5.9 Trench 50 contained two linear features [5001] and [5002], aligned northeast-southwest and northwest-southeast respectively (**Figure 4; Plates 11-12**). Both measured 1.3-1.5m wide, 0.2-0.25m deep and were bowl-shaped in profile, with gently sloping sides and an undulating or flat base. Their fills (contexts (5003) and (5004)) comprised a loose, mid-grey, silty sand with some medium sized stones. Another piece of struck flint (SF6) was recovered from the fill of [5001], however this may represent material introduced from the ploughsoil. These two features are probably related to agricultural activities, interpreted as the remains of field drains of probable recent origin.



Plate 3: NNE-facing section of [601]



Plate 4: NW-facing section of [602]



Plate 5: SSW-facing section of [801]



Plate 6: E-facing section of [2601]



Plate 7: W-facing section of [3201]



Plate 8: SW-facing section of [4801]



Plate 9: W-facing section of slot through [3404]



Plate 10: Slot through (4901)



Plate 11: NW-facing section of [5001]



Plate 12: View of [5002]

5.10 Bronze Age Cists

- 5.10.1 Between 1st and 3rd May 2019 an excavation was carried out over two cists which had been previously excavated in 1938 by J.M. Davidson (Davidson 1940; Highland HER No. MHG11733). A hand-dug trench was excavated in order to expose the extent of the two cists before the backfill material from the previous excavation was removed (**Figure 3**).
- 5.10.2 Both cists were constructed using four large sandstone slabs set upright, each enclosing a space approximately 1.2m by 0.8m and up to 0.7m deep (**Figures 8-12**). Cist 2 [003], the southwest of the two, also had a large stone slab loosely laid flat across its base. This slab was not mentioned by Davidson in his original report and appears to have been placed there during the backfilling of his excavation. Three capstones (which may have been broken) were located over the top of the cists (**Figure 8**). These stones were probably reinstated after the 1938 excavation and are unlikely to be in their original positions. Other large slabs are visible further downslope from the cists and were likely displaced during their discovery.
- 5.10.3 The two cists were aligned northeast-southwest and set out end to end with a gap of roughly 0.4m between them. A mound of large rounded stones was piled across the gap between the two cists (**Figure 9**). Davidson interpreted these stones as the remains of a possible cairn that had once been present over the cists (Davidson 1940). The natural subsoil along the entire ridge is very stony, with stones visible on the ground surface, so it is also possible that these are natural stones that have accumulated over the cists during ploughing.

- 5.10.4 Opposing quadrants were excavated on the exterior of the cist slabs in order to characterise the construction of the graves (**Figure 10**). No clear construction cut was visible, but the darkening of the natural subsoil on the outside of the slabs suggested that the natural ground soil was redeposited as a packing fill to support the slabs. Some smaller slabs and rounded stones were set on the outside of the main slabs and packed into the corners for support and to fill gaps (**Figure 11**).
- 5.10.5 During the 1938 excavation a very degraded inhumation burial had been uncovered within Cist 1 [004]. Only a few bones were identifiable, but they were able to conclude that the burial was in a crouched position on the left side (Davidson 1940). Cist 2 [003] was more poorly preserved and the only evidence of human remains was a shadow-like stain on the base of the cist. A food vessel and a barbed-and-tanged flint arrowhead (currently held in Dunrobin Castle Museum) were recovered from Cist 2 in 1938, providing a Bronze Age date for the burials. The food vessel was interpreted as a “Yorkshire Vase” and the arrowhead, with its serrated edges, were described as a “Conygar type” by Green . Davidson suggested that the two burials were constructed at different times because of differences in construction of the two cists and the fact that they are slightly out of alignment with each other. This interpretation seemed unlikely to the recent excavators.



Plate 13: Pre-excavation of the cists



Plate 14: Cists after capstones removed



Plate 15: Cists after rubble removed



Plate 16: Cists after backfill removed



Plate 17: Cist 1



Plate 18: Cist 2



Plate 19: Corner construction of cist 1



Plate 20: Corner construction of cist 2



Plate 21: Post-excavation view of cists

6.0 CONCLUSION AND RECOMMENDATIONS

- 6.1 The archaeological evaluation at Dornoch revealed a number of archaeological features of varying time periods and significance. Four pits [601], [602], [801], and [2601] and two linear features [5001] and [5002] proved to be inconclusive, some of which may be related to relatively recent agricultural practices. A possible fire-pit [3201] and posthole [4801] on the west side of the site contained no diagnostic material, but have the potential to represent prehistoric activity, which is supported by the presence of Iron Age and Neolithic period archaeology to the north side of the phase 2 area and Bronze Age funerary activity within the north side of the phase 2 area. Analysis of environmental samples has the opportunity provide evidence of the function and date of some of the features.
- 6.2 The nature of the large pit or linear [3404] could not be fully determined due to the proximity of overhead power lines preventing its full extent from being exposed. Finds of shell, bone and medieval pottery indicate definite human activity, possibly of medieval date. The nearby deposit (4901), which contained flint fragments, appears to represent the remains of a prehistoric soil layer.
- 6.3 Excavation of the two cists was carried out in order to characterise the remains of the monuments. Detailed recording of the structural remains was carried out and all of the slabs were labelled in the event that removal and reconstruction is necessary. The cists should be left in situ until the development programme is confirmed and removal deemed necessary.
- 6.4 Due to the presence of archaeological remains in the area of the Phase 2 development, although targetted excavation is deemed unnecessary, archaeological monitoring is recommended during future groundworks. Given the presence of two Bronze Age burials on the site and significant archaeological remains to the north, an archaeological watching brief would enable the identification and recording any further archaeological features within the site prior to their loss by development.

7.0 REFERENCES

Chartered Institute for Archaeologists, 2014. *Standards and Guidance: Archaeological Evaluation*. Reading: ClfA.

Davidson, J.M. 1940. *Notes on Some Antiquities from Sutherland*. Proc Soc Antiq Scot 74:12-23.

Farrell, S. 2007. *Interim Report of Archaeological Work for the Dornoch Development Area, Dornoch, Highland*. Unpublished report.

Highland Council Historic Environment Record 2019. Accessed online at <https://her.highland.gov.uk> on 1st April 2019.

Scottish Government 2011. *PAN 2/2011 Planning and Archaeology*.

Scottish Government 2014. *Scottish Planning Policy*.

Stirling, L. 2019. *Dornoch North, Phase 2, Highlands: Archaeological Evaluation Written Scheme of Investigation*. Unpublished report.

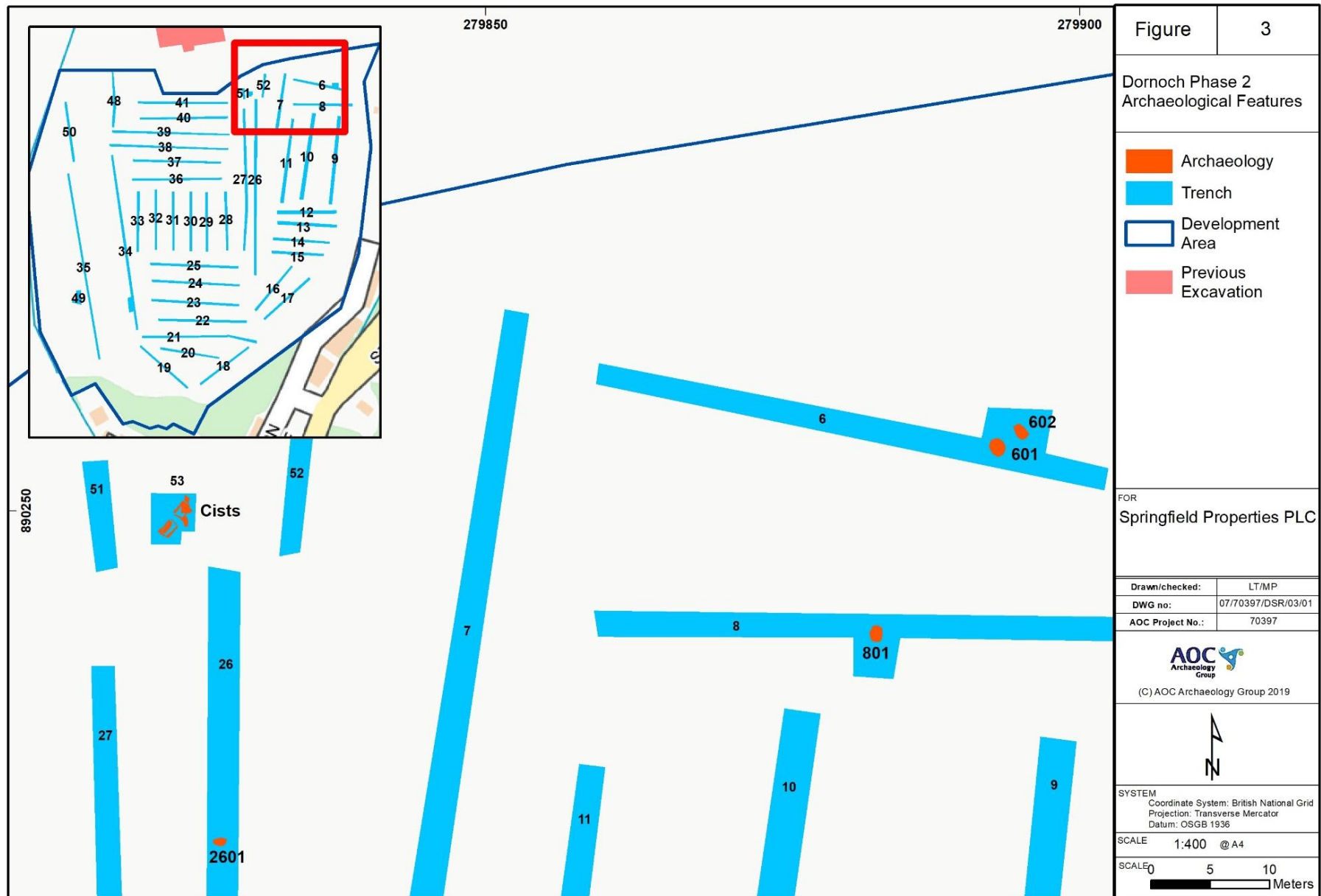


Figure 3: Location of the archaeological features

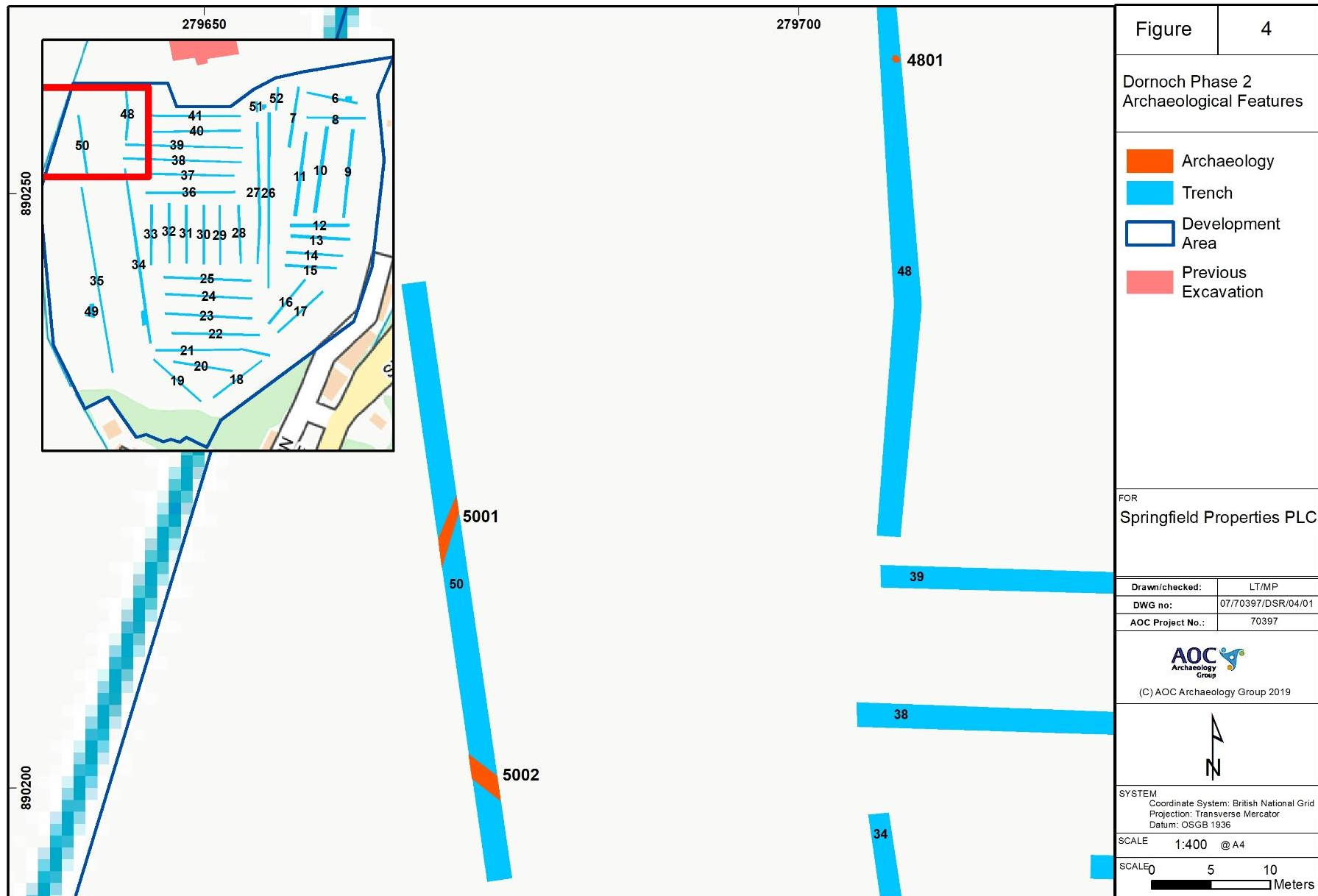
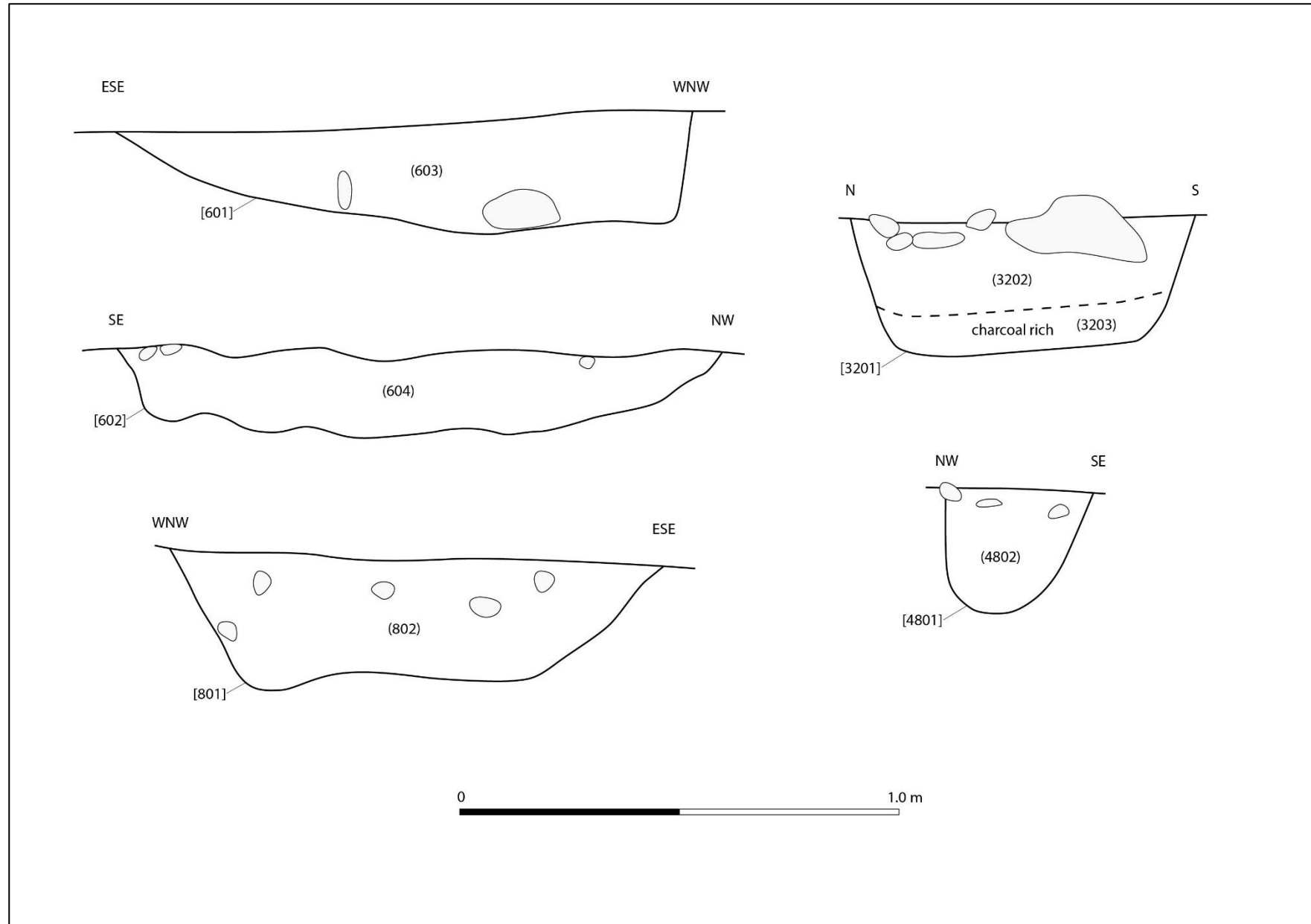


Figure 4: Location of the archaeological features



**Figure 6: Section drawings**

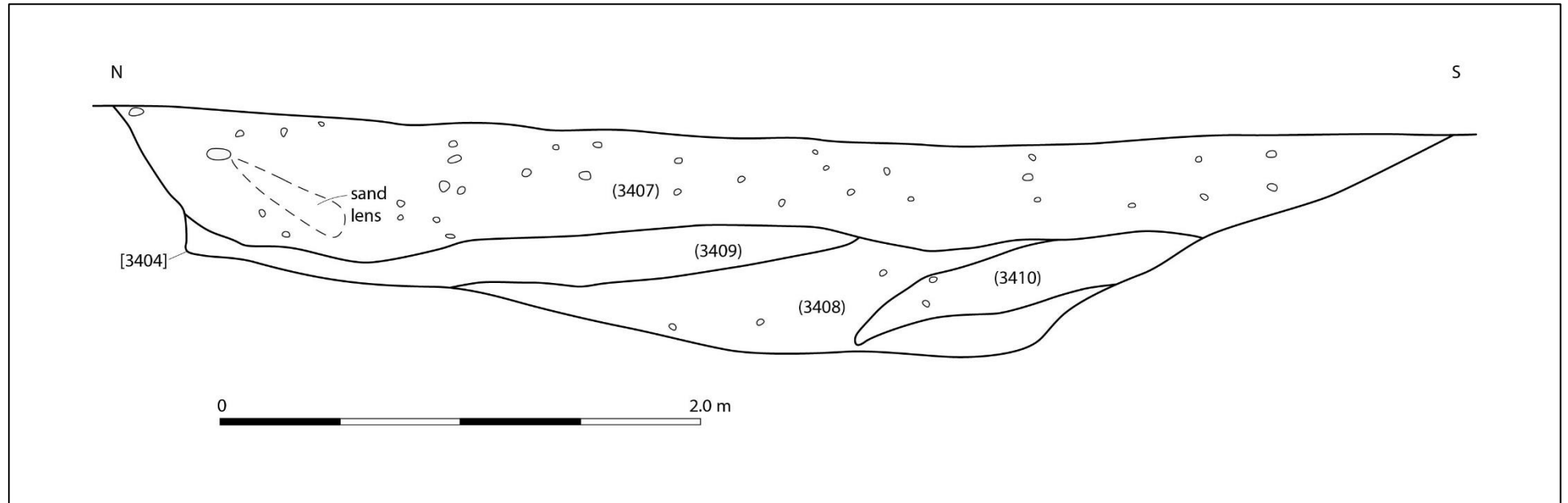


Figure 7: Section drawing of feature [3404]

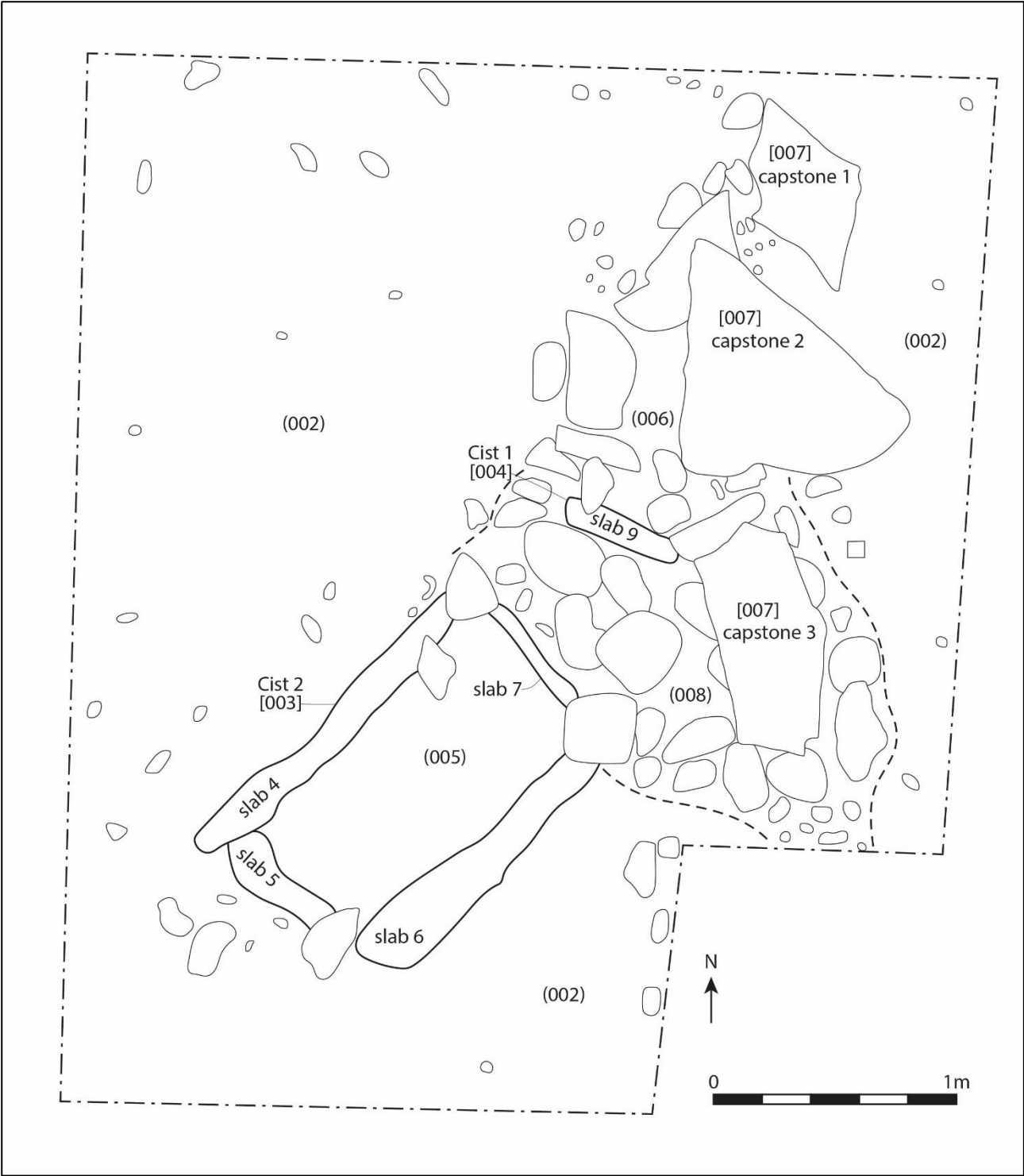


Figure 8: Pre-excitation plan of the cists

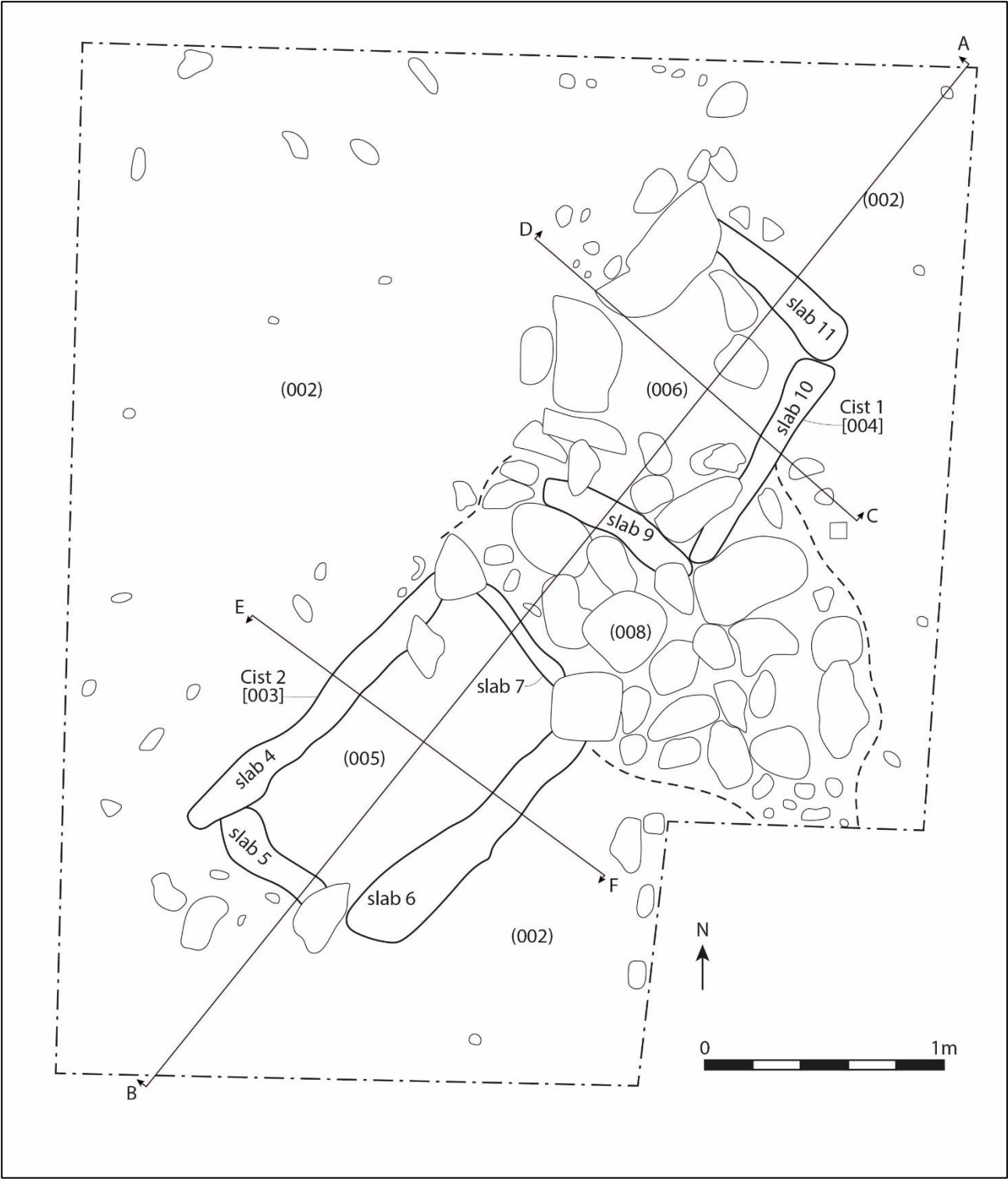


Figure 9: Pre-excitation plan of the cists after removal of capstones

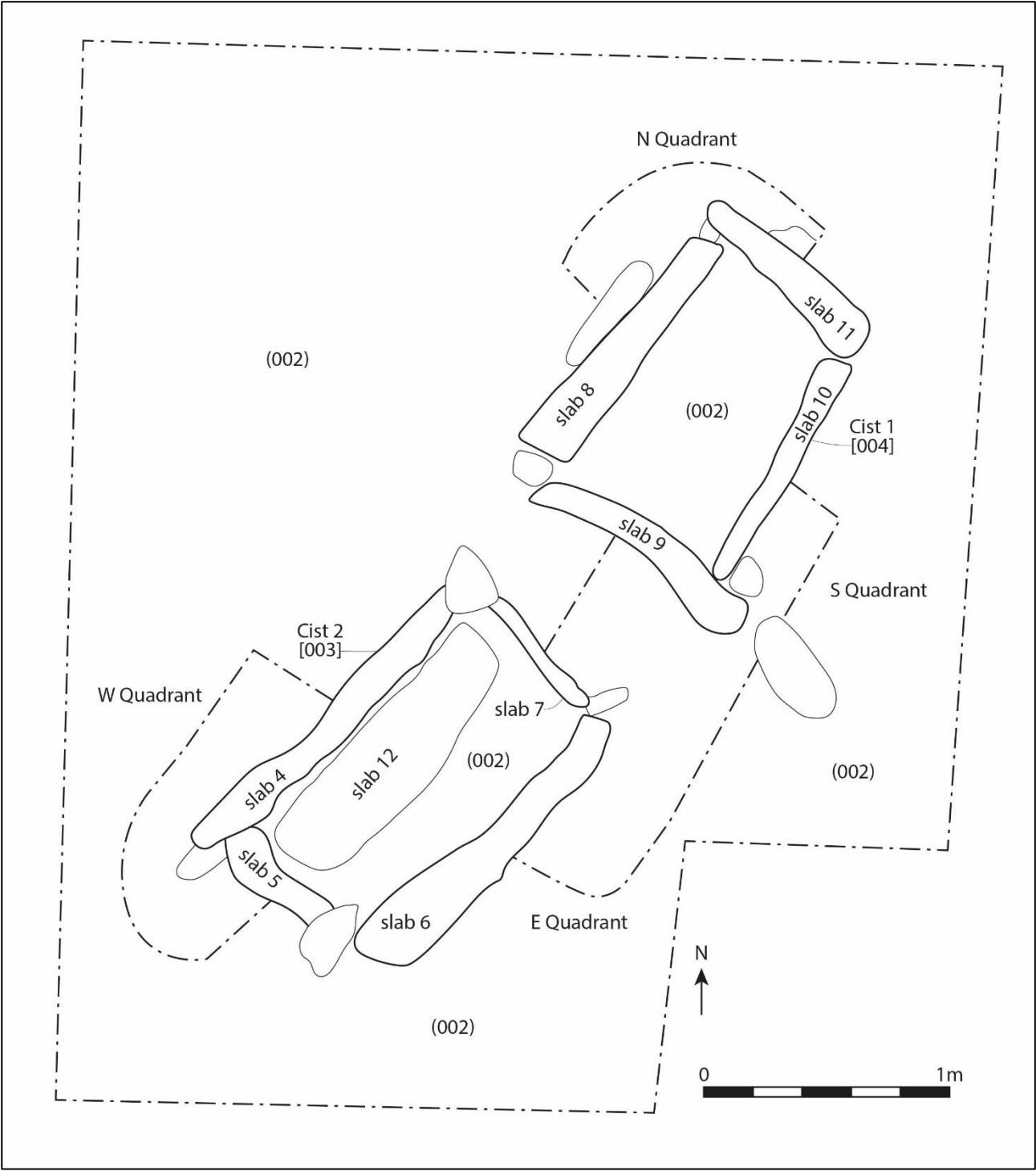


Figure 10: Post-excavation plan of the cists

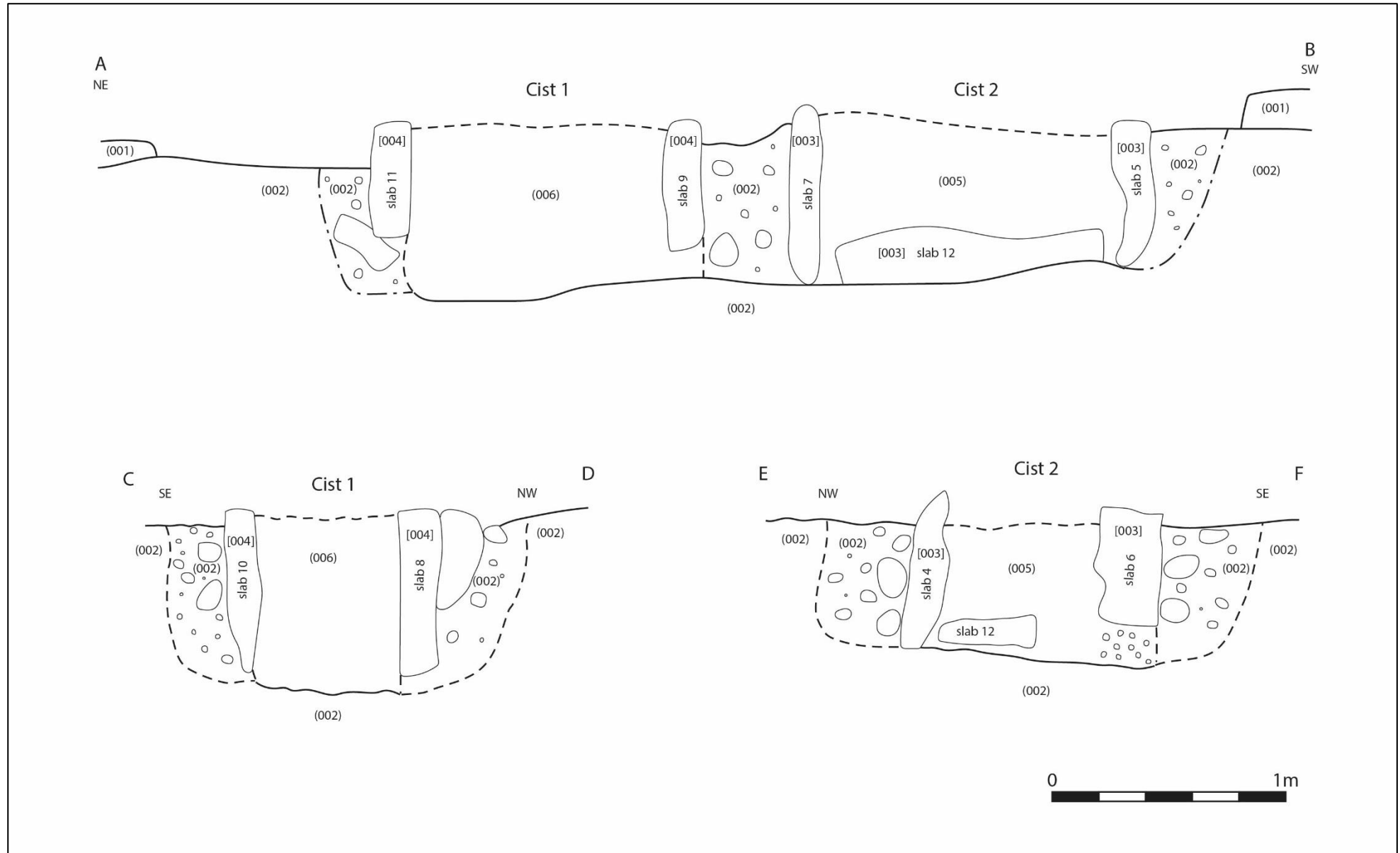


Figure 11: Section drawings of the cists



Figure 12: Image of a photogrammetry model of the Bronze Age cists



Plate 22: Trench 10, facing N



Plate 23: Trench 26, facing N



Plate 24: Trench 32, facing S



Plate 25: Trench 35 (mid), facing SSE

Appendix 1 List of Trenches

Trench No.	Dimensions (m)	Depths (m)	Comments	Archaeology
6	50 x 2	0.70m (ENE), 0.65m (20m), 0.60m (40m), 0.45m (WSW).	Light orange brown silty sand with small stones throughout.	Large pit [601]; Large pit [602].
7	50 x 2	0.40m (SSW), 0.30m (20m), 0.30m (40m), 0.40 (NNE).	Mid orange brown, coarse gravelly sand with lots of stones of varying sizes.	None
8	50 x 2	1.00m (ENE), 0.80m (20m), 0.30m (40m), 0.30m (WSW).	Light-mid grey brown silty sand with some stones throughout and some waterlogging at deepest point. Becomes more stony and mid orange colour further uphill.	Large pit [801].
9	75 x 2	1.10m (N), 1.00m (37m), 0.45 (75m).	Mid-orange brown silty sand with some small stone inclusions. More greyish brown in some places.	Gravel drain.
10	75 x 2	0.55m (N), 1.20m (37m), 0.40m (75m).	Light brownish orange silty sand with frequent medium stone inclusions.	Gravel drain.
11	75 x 2	0.60m (N), 0.90m (38m), 0.35m (75m).	Orange brown sandy silt with frequent medium stone inclusions.	Gravel drain.
12	50 x 2	0.35m (ENE), 0.40m (20m), 0.40m (40m), 0.40m (WSW).	Mid orange brown, loose, coarse gravelly sand with frequent stones.	None.
13	50 x 2	0.40m (E), 0.30m (20m), 0.30m (40m), 0.30m (W).	Mid orange brown coarse sand with frequent stones on steep hillside.	None.
14	50 x 2	0.20m (E), 0.40m (20m), 0.30m (40m), 0.30m (W).	Mid orange brown coarse sand with frequent stone inclusions.	None.
15	50 x 2	0.30m (E), 0.40m (20m), 0.30m (40m), 0.20m (W).	Mid orange brown coarse sand with frequent stone inclusions.	None.

Trench No.	Dimensions (m)	Depths (m)	Comments	Archaeology
16	50 x 2	0.50m (NE), 0.30m (20m), 0.30m (40m), 0.30m (SW).	Mid orange brown coarse silty sand with frequent stone inclusions.	None.
17	50 x 2	0.85m (NE), 0.75m (25m), 0.40m (SW).	Mid orange brown silty sand with frequent medium stone inclusions.	None.
18	50 x 2	0.30m (NE), 0.30m (25m), 0.25m (SW).	Mid orange brown sandy coarse sand with some silt inclusions.	None.
19	50 x 2	0.25m (SE), 0.65m (25m), 0.30 (50m).	Mid orange brown sandy coarse sand with some silt inclusions.	None.
20	50 x 2	0.35m (WNW), 0.75 (25m), 0.25m (ESE).	Mid orange brown sandy coarse sand with some silt inclusions.	Plough marks.
21	100 x 2	0.40m (E), 0.55m (50m), 0.40m (W).	Mid orange brown sandy coarse sand with some silt inclusions.	Plough marks.
22	75 x 2	0.35m (W), 0.65m (40m), 0.35m (E).	Mid orange brown sandy coarse sand with some silt inclusions.	Plough marks.
23	75 x 2	0.70m (W), 0.30m (20m), 0.50m (40m), 0.50m (50m), 0.60m (60m), 0.40m (E).	Mid orange brown loose silty sand with frequent stone inclusions.	None.
24	75 x 2	0.70m (W), 1.10m (20m), 0.40m (40m), 0.50m (50m), 0.60m (60m), 0.30m (E).	Mid orange brown silty sand with frequent stone inclusions.	None.
25	75 x 2	0.60m (W), 1.25m (20m), 0.65m (40m), 0.45m (50m), 0.80m (60m), 0.30m (E).	Mid orange brown coarse silty sand with frequent stone inclusions.	None.
26	150 x 2	0.25 (N), 0.25m (60m), 0.20m (S).	Light orange yellow sandy silt.	Plough marks; Large pit [2601].
27	120 x 2	0.25m (N), 0.25m (20m), 0.30m (40m), 0.25m (50m), 0.35m (60m), 0.30m (80m), 0.20m (100m), 0.30m (120m).	Mid orange brown, loose, gravelly sand with frequent stone inclusions.	None.
28	50 x 2	0.40m (N), 0.50m (25m), 0.60m (S).	Mid orange brown sandy gravel with frequent stone inclusions.	None.

Trench No.	Dimensions (m)	Depths (m)	Comments	Archaeology
29	50 x 2	0.35m (N), 0.35m (25m), 0.35m (S).	Mid orange brown sandy gravel with frequent stone inclusions.	Trial trench from Phase 1 investigations.
30	50 x 2	0.50m (N), 0.70m (25m), 0.90m (S).	Mid orange brown silty sand with frequent stone inclusions.	Gravel drain.
31	50 x 2	0.60m (N), 0.60m (25m), 0.85m (S).	Mid orange brown silty sand with frequent stone inclusions.	Plough marks.
32	50 x 2	0.85m (N), 0.90m (25m), 0.50m (S).	Mid orange brown with some stone and yellow sandy silt inclusions.	Medium pit [3201].
33	50 x 2	0.75m (N), 0.80m (25m), 1.00m (S).	Mid orange brown silty sand with frequent stone inclusions.	None.
34	150 x 2	0.75m (NNW), 0.85m (75m), 0.40m (150m).	Natural light orange grey silty sand with occasional small stone inclusions.	Large pit [3404]; Gravel drain.
35	150 x 2	1.20m (SSE), 0.35m (75m), 0.30m (150m).	Mid brown orange sandy gravel with some inclusions of yellow orange silty sand.	Plough marks; Gravel drains.
36	75 x 2	0.70m (W), 0.65m (20m), 0.75m (40m), 0.50m (50m), 0.25m (60m), 0.30m (E).	Mid orange brown silty sand with occasional stone inclusions. Stonier and darker further uphill.	None.
37	75 x 2	0.70m (W), 0.65m (20m), 0.50m (40m), 0.40m (50m), 0.35m (60m), 0.45m (E).	Light orange brown silty sand with occasional stone inclusions. Stonier and darker further uphill.	None.
38	100 x 2	0.70m (W), 0.70m (20m), 0.80m (40m), 0.75m (50m), 0.65m (60m), 0.50m (80m), 0.60m (E).	Pale white/orange brown silty sand with occasional stone inclusions. Stonier and more orange further uphill.	Plough marks.
39	100 x 2	0.50m (W), 0.80m (20m), 0.70m (40m), 0.60m (50m), 0.50m (60m), 0.40m (80m), 0.60m (E).	Pale orange brown silty sand with very occasional stone inclusions.	Plough marks.
40	75 x 2	0.60m (W), 0.65m (20m), 0.40m (40m), 0.30m (50m), 0.40m (60m), 0.50m (E).	Mid orange brown silty sand with occasional stone inclusions. Stonier and more compact further uphill.	Plough marks.

Trench No.	Dimensions (m)	Depths (m)	Comments	Archaeology
41	75 x 2	0.50m (E), 0.80m (20m), 0.35m (40m), 0.30m (50m), 0.30m (60m), 0.40m (W).	Mid orange brown silty sand with occasional stone inclusions and some black/manganese staining.	Plough marks.
48	50 x 2	0.50m (S), 0.50m (20m), 0.40m (40m), 0.40m (N).	Mid light orange brown silty sand with very occasional stone inclusions.	Posthole [4801].
49	10 x 14	0.65m (throughout.	Dark blackish brown silty sand with some stone inclusions.	Deposit [4901] containing flint fragments.
50	50 x 2	0.90m (NNW), 0.50m (20m), 0.30m (40m), 0.40m (SSE).	Greyish orange brown loose silty sand.	Possible gravel drains/furrows [5001] and [5002].
51	10 x 2	0.20m (N), 0.30m (S).	Mid orange brown, loose, stony silty sand.	None.
52	20 x 2	0.20m (N), 0.30m (S).	Mid orange brown, loose, stony silty sand.	None.
53	4 x 3.7	0.2-0.4m	Mid orange brown, loose, stony silty sand.	Cists [003] and [004], previously excavated in the 1930/40s.

Appendix 2 List of Contexts

Context No.	Context Type	Description	Over	Under	Fill of	Filled By	Cuts	Cut By	Same As	Interpretation
001	Deposit	Mid grey brown silty sand of a very loose compaction with frequent small stone inclusions. Depth: up to 0.40m.	-	-	-	-	-	-	-	Topsoil.
002	Deposit	Mid orange brown silty sand of a very loose compaction with frequent small and medium size stones.	-	-	-	-	-	-	-	Natural subsoil.
003	Structure	Cist formed by four upright slabs creating a rectangular shape in plan. Measures 1.20m NE-SW x 0.60m internally x 0.64m deep. The corners, where slabs meet have been packed with smaller stones/slabs to fill gaps. A large flat slab (slab 12) has been laid over the base of the cist. Medium sized (~0.20m) natural stones appear to have been packed around the exterior of the cist slabs during construction. Slab 4 measures 1.50m long x 0.18m wide x 0.72m dep. Slab 5 measures 0.45m long x 0.16m wide x 0.65m deep. Slab 6 measures 1.30m long x 0.24m wide x 0.44m deep. Slab 7 measures 0.65m long x 0.10m wide x 0.65m deep. Slab 12 measures 1.10m long x 0.40m wide x 0.12 thick.	002	001, 007, 008	-	005	002	-	-	Cist 2 stone structure.

Context No.	Context Type	Description	Over	Under	Fill of	Filled By	Cuts	Cut By	Same As	Interpretation
004	Structure	Cist formed by four upright slabs creating a sub-rectangular shape in plan. Measures 1.20m NE-SW x 0.77m internally x 0.70m deep. The corners, where slabs meet, are packed with smaller stones/slabs to fill gaps and for structural support. There are also smaller stones/slabs positioned underneath the main four slabs for structural support. Medium sized (~0.20m) natural stones appear to have been packed around the exterior of the four cist slabs during construction. Slab 8 measures 1.05m long x 0.20m wide x 0.55m deep. Slab 9 measures 0.86m long x 0.18m wide x 0.60m deep. Slab 10 measures 1.00m long x 0.15m wide x 0.60m deep. Slab 11 measures 0.76m long x 0.16m wide x 0.40m deep. Slab 11 has a cup mark on the interior face, though it is unclear whether this is carved or natural.	002	001, 007, 008	-	006	002	-	-	Cist 1 stone structure.
005	Fill	Fill of cist [003]: Dark grey brown silty sand of a very loose compaction with some large (~0.50m) and small stone inclusions. Some small roots. SF # 013; Bone fragment. Also some recent pot and metal fragments.	003	001	003	-	-	-	-	Fill of Cist 2: backfill from the 1938 excavation.
006	Fill	Fill of cist [004]: Dark grey brown silty sand of a very loose compaction with some large (~0.50m) and small stone inclusions. Some small roots. SF # 015; 2 x Puff Balls from basal fill. SF # 014; 2 x metal fragments. Also some recent pot and metal fragments.	004	001	004	-	-	-	-	Fill of Cist 1: backfill from the 1938 excavation.

Context No.	Context Type	Description	Over	Under	Fill of	Filled By	Cuts	Cut By	Same As	Interpretation
007	Structure	Three large flat slabs laid over the top of cist structures [003] and [004]. Slab 1 is sub-rectangular and possibly broken; it measures 0.70m x 0.45m x 0.10m. Slab 2 is sub-triangular; it measures 1.10m x 0.85m x 0.20m. Slab 3 is sub-rectangular; it measures 1.00m x 0.45m x 0.15m.	003, 004, 008	001	-	-	-	-	-	Capstones from Cist 1 and Cist 2, which have probably been displaced from their original positions by ploughing. Other flat slabs are visible downslope and may have been part of the cists.
008	Deposit	Deposit of large stones in topsoil partially covering and between the two cists. Stones are naturally rounded up to 0.5m long.	002, 003, 004	001, 007	-	-	-	-	-	Interpreted in 1938 as the remains of a cairn over the cists, but may be natural.
601	Cut	Oval-shaped pit with steep sloping sides which break to form a flat base. U-shaped in profile. 1.40m long x 1.30m wide x 0.20m deep.	-	-	-	603	-	-	-	Pit of unknown function. Probably associated with [602] and [801] given proximity and similarity.
602	Cut	Shallow, sub-rectangular pit with gently sloping sides which break imperceptibly to form an undulating, stony base. Measures 1.40m long x 1.20m wide x 0.16m deep.	-	-	-	604	-	-	-	Pit of unknown function. Probably associated with [601] and [801] given proximity and similarity.
603	Fill	Fill of pit [601]. Mid-blackish grey loose silty sand with frequent stone and occasional charcoal inclusions. SF # 010. 3 x pot sherds.	-	-	601	-	-	-	-	Fill of pit [601].
604	Fill	Fill of pit [602]. Mid grey loose sand of friable composition with frequent inclusions of medium sized stones. Some small roots.	-	-	602	-	-	-	-	Fill of pit [602].
801	Cut	Sub-oval pit with steep sides which break gradually to form a flat base. Measures 1.40m long x 1.10m wide x 0.35m deep.	-	-	-	802	-	-	-	Pit of unknown function. May be associated with similar pits [601] and [602] which are positioned ~10m to the NNE.

Context No.	Context Type	Description	Over	Under	Fill of	Filled By	Cuts	Cut By	Same As	Interpretation
802	Fill	Mid grey sand of friable composition and medium compaction with frequent medium size stone inclusions. Some small roots. Darker lens in southeast corner.	-	-	801	-	-	-	-	Fill of pit [801].
2601	Cut	Oval-shaped pit with steep sloping sides which break to form an undulating base. Measures 1.10m long x 1.00m wide x 0.35m deep.	-	-		2602	-	-	-	Stone-filled pit.
2602	Fill	Mid greyish brown silty sand with frequent large stones inclusions. Some of the stones appear to be set upright but do not form anything structural.	-	-	2601	-	-	-	-	Fill of pit [2601].
3201	Cut	Oval-shaped pit with steep sides which break sharply to form a flat base. U-shape in profile. 0.80m long x 0.75m wide x 0.30m deep.	-	-		3202	-	-	-	Possible fire pit.
3202	Fill	Mid greyish brown silty sand with frequent large stone and charcoal inclusions.	-	-	3201	-	-	-	-	Upper fill of possible fire pit [3201].
3203	Fill	Dark blackish brown sandy silt. Extremely high concentration of charcoal. No stone present.	-	-	3201	-	-	-	-	Basal fill of possible fire pit [3201].

Context No.	Context Type	Description	Over	Under	Fill of	Filled By	Cuts	Cut By	Same As	Interpretation
3404	Cut	Large suboval pit/linear measuring 5.7m N-S x 5.8m E-W and extending out with the W edge of the trench. Sides are gently/steeply sloping (steeper on the E edge), curving onto an undulating, possibly clay lined base. Up to 0.9m deep, but base was unclear due to the similarities of the lower fills to the natural subsoil. Some animal burrowing present at the edges and base. Slot 1 was dug at the terminus (E edge) and measured 1.20m E-W x 1.40m N-S x 0.40m deep. Slots 2/3 were dug across the centre and eventually combined into one slot measuring 1.4m wide.	002	-	-	3407, 3408, 3409, 3410	002	-	-	Possible terminus of a linear feature or possible large pit.
3407	Fill	Upper fill of [3404]: Dark grey brown, loose/friable silty sand with frequent small stone inclusions and very occasional charcoal inclusions. Contains fragments of bone, shell and Medieval pottery. SF # 003. Fragments of pottery, possibly Medieval.	3408	-	3404	-	-	-	-	Upper fill of large pit/linear [3404].
3408	Fill	Lower fill of [3404] consisting of thin lenses or layers of pale orange brown compact sandy clay and dark grey brown silty sand with frequent inclusions of medium stones. Very mixed with possible animal disturbance in parts. No clear edge/base.	-	3407	3404	-	-	-	-	Basal fill of pit/linear [3404]. Lenses/layers may be natural banding.
3409	Fill	Mid orange-brown fine sand with very few inclusions which forms a layer between upper fill (3407) and lower clay like deposit (3408). This fill is only present on the north side of the feature.	3408, 002	3407	3404	-	-	-	-	Middle fill of large pit/linear [3404].

Context No.	Context Type	Description	Over	Under	Fill of	Filled By	Cuts	Cut By	Same As	Interpretation
3410	Fill	Dark grey-brown coarse silty sand with frequent small stone inclusions. Similar to the lens seen within (3407).	3408	3407, 3408	3404	-	-	-	-	Middle fill of large pit/linear [3404]. May be a natural banding/lens.
4801	Cut	Sub-oval pit with steep sides which break to form a gently sloping wet clayish base. Lined with large suboval stones. Measures 0.52m x 0.57m x 0.27m deep.	-	-	-	4802	-	-	-	Stone lined posthole.
4802	Fill	Fill of possible posthole [4801]. Mid brown silty sand with occasional charcoal and possible burnt bone inclusions. Medium stones have possibly been packed around the upper edges of the cut.	-	-	4801	-	-	-	-	Fill of stone lined posthole [4801].
4901	Deposit	Dark grey sandy silt with occasional small stones and charcoal inclusions. Measures 2.50m long x 1.6m wide x 0.16m deep. Contains fragments of possible worked flint. SF # 012. 3 x Flint flakes.	002	001	-	-	-	-	-	Fill of natural hollow.
5001	Cut	Linear feature aligned NE-SW which extends beyond trench boundary on both sides. Gently sloping sides break to form an undulating base. Bowl-shaped in profile. 1.30m wide x 2.50m exposed x 0.25m deep.	-	-	-	5003	-	-	-	Cut of possible furrow/gravel drain. Possible relationship with [5002]
5002	Cut	Linear feature aligned NW-SE. Which extends beyond trench boundary on both sides. Gently sloping sides break to form a flat base. Bowl-shaped in profile. Measures 1.50m wide x 2.50m exposed x 0.20m deep.	-	-	-	5004	-	-	-	Cut of possible furrow/gravel drain. Possible relationship with [5001].

Context No.	Context Type	Description	Over	Under	Fill of	Filled By	Cuts	Cut By	Same As	Interpretation
5003	Fill	Fill of linear [5001]. Mid grey loose silty sand with some stone inclusions. SF # 006. 1 x Flint debitage.	-	-	5001	-	-	-	-	Fill of possible furrow/gravel drain [5001].
5004	Fill	Fill of linear [5002]. Mid grey brown silty sand with some medium stone inclusions.	-	-	5002	-	-	-	-	Fill of possible furrow/gravel drain [5002].

Appendix 3 List of Site Photographs

Photo No.	Trench/ Feature No.	Description	Direction Facing	Date
1	-	General view of site pre-works.	-	15/04/2019
2	-	General view of site pre-works.	-	15/04/2019
3	-	General view of site pre-works.	-	15/04/2019
4	-	General view of site pre-works.	-	15/04/2019
5	-	General view of site pre-works.	-	15/04/2019
6	-	General view of site pre-works.	-	15/04/2019
7	-	General view of site pre-works.	-	15/04/2019
8	-	General view of site pre-works.	-	15/04/2019
9	-	General view of site pre-works.	-	15/04/2019
10	-	General view of site pre-works.	-	15/04/2019
11	-	General view of site pre-works.	-	15/04/2019
12	Trench 7	Post-excavation image of Trench 7.	SSW	15/04/2019
13	Trench 6	Post-excavation image of Trench 6.	ENE	15/04/2019
14	Trench 8	Post-excavation image of Trench 8.	ENE	15/04/2019
15	-	General working shot.	SE	15/04/2019
16	Cist area	Pre-excavation image of cist area.	NW	15/04/2019
17	Trench 12	Post-excavation image of Trench 12.	ENE	15/04/2019
18	Trench 13	Post-excavation image of Trench 13.	E	15/04/2019
19	-	General working shot.	NE	15/04/2019
20	Trench 14	Post-excavation image of Trench 14.	E	15/04/2019
21	Trench 13	Post-excavation image of Trench 13.	W	15/04/2019
22	Trench 12	Post-excavation image of Trench 12.	WSW	15/04/2019
23	Trench 15	Post-excavation image of Trench 15.	E	15/04/2019
24	Trench 16	Post-excavation image of Trench 16.	NE	15/04/2019
25	Trench 9	Post-excavation image of Trench 9.	N	15/04/2019
26	Trench 9	Post-excavation image of Trench 9.	S	15/04/2019
27	Trench 10	Post-excavation image of Trench 10.	S	15/04/2019
28	Trench 10	Post-excavation image of Trench 10.	N	15/04/2019
29	Trench 11	Post-excavation image of Trench 11.	N	15/04/2019
30	Trench 11	Post-excavation image of Trench 11.	S	15/04/2019
31	Trench 26	Post-excavation image of Trench 26.	N	15/04/2019
32	Trench 26	Post-excavation image of Trench 26.	S	15/04/2019
33	Trench 26	Post-excavation image of Trench 26.	N	15/04/2019
34	Trench 26	Post-excavation image of Trench 26.	S	15/04/2019
35	Trench 17	Post-excavation image of Trench 17.	SW	15/04/2019
36	Trench 17	Post-excavation image of Trench 17.	NE	15/04/2019
37	Trench 32	Post-excavation image of Trench 32.	S	15/04/2019
38	Trench 32	Post-excavation image of Trench 32.	N	15/04/2019
39	Trench 31	Post-excavation image of Trench 31.	N	15/04/2019
40	Trench 31	Post-excavation image of Trench 31.	S	15/04/2019
41	Trench 30	Post-excavation image of Trench 30.	N	15/04/2019
42	Trench 30	Post-excavation image of Trench 30.	S	15/04/2019

Photo No.	Trench/ Feature No.	Description	Direction Facing	Date
43	Trench 33	Post-excavation image of Trench 33.	S	15/04/2019
44	Trench 33	Post-excavation image of Trench 33.	N	15/04/2019
45	Trench 41	Post-excavation image of Trench 41.	W	16/04/2019
46	Trench 40	Post-excavation image of Trench 40.	W	16/04/2019
47	Trench 48	Post-excavation image of Trench 48.	SSW	16/04/2019
48	Trench 39	Post-excavation image of Trench 39.	W	16/04/2019
49	Trench 38	Post-excavation image of Trench 38.	W	16/04/2019
50		General working shot/site overview.	NNW	16/04/2019
51	Trench 35	Post-excavation image of Trench 35.	NNW	16/04/2019
52	Trench 35	Post-excavation, mid-trench image of Trench 35.	SSE	16/04/2019
53	Trench 35	Post-excavation, mid-trench image of Trench 35.	NNW	16/04/2019
54	Trench 35	Post-excavation image of Trench 35.	SSE	16/04/2019
55	Trench 37	Post-excavation image of Trench 37.	W	17/04/2019
56	Trench 36	Post-excavation image of Trench 36.	W	17/04/2019
57	Trench 27	Post-excavation image of Trench 27.	S	17/04/2019
58	Trench 25	Post-excavation image of Trench 25.	W	17/04/2019
59	Trench 24	Post-excavation image of Trench 24.	W	17/04/2019
60	Trench 29	Post-excavation image of Trench 29.	S	17/04/2019
61	Trench 29	Post-excavation image of Trench 29.	N	17/04/2019
62	Trench 28	Post-excavation image of Trench 28.	S	17/04/2019
63	Trench 28	Post-excavation image of Trench 28.	S	17/04/2019
64	Trench 34	Post-excavation image of Trench 34.	NNW	17/04/2019
65	Trench 34	Post-excavation image of Trench 34.	SSE	17/04/2019
66	Trench 34	Post-excavation image of Trench 34.	NNW	17/04/2019
67	Trench 34	Post-excavation image of Trench 34.	SSE	17/04/2019
68	Trench 34	Post-excavation image of Trench 34.	SSE	17/04/2019
69	Trench	Post-excavation image of Trench 19.	NW	17/04/2019
70	Trench	Post-excavation image of Trench 19.	SE	17/04/2019
71	Trench	Post-excavation image of Trench 20.	ESE	17/04/2019
72	Trench	Post-excavation image of Trench 20.	WNW	17/04/2019
73	Trench	Post-excavation image of Trench 18.	NE	17/04/2019
74	Trench	Post-excavation image of Trench 18.	SW	17/04/2019
75	Trench	Post-excavation image of Trench 21.	E	17/04/2019
76	Trench	Post-excavation image of Trench 21.	W	17/04/2019
77	Trench	Post-excavation image of Trench 22.	W	17/04/2019
78	Trench	Post-excavation, mid-trench image of Trench 22.	W	17/04/2019
79	Trench	Post-excavation image of Trench 22.	E	17/04/2019
80	[3201]	Pre-excavation image of pit [3201] (3202).	S	18/04/2019
81	[3201]	Post-excavation image of pit [3201] (3202).	E	18/04/2019

Photo No.	Trench/ Feature No.	Description	Direction Facing	Date
82	[3201]	West-facing section of pit [3201] (3202).	E	18/04/2019
83	[3201]	West-facing section of pit [3201] (3202).	E	18/04/2019
84	[3201]	West-facing section of pit [3201] (3202).	E	18/04/2019
85	[4801]	Southwest-facing section of stone-lined possible posthole [4801] (4802).	NE	18/04/2019
86	[4801]	Southwest-facing section of stone-lined possible posthole [4801] (4802).	NE	18/04/2019
87	[4801]	Southwest-facing section of stone-lined possible posthole [4801] (4802).	NE	18/04/2019
88	[3404]	Pre-excavation image of large possible linear/pit [3404] (3407).	N	18/04/2019
89	[3404]	Pre-excavation image of large possible linear/pit [3404] (3407).	N	18/04/2019
90	(4901)	East-southeast-facing section of spread (4901).	WSW	18/04/2019
91	(4901)	East-southeast-facing section of spread (4901).	WSW	18/04/2019
92	[5002]	Post-excavation image of possible field drain [5002] (5004).	NE	18/04/2019
93	[5002]	West-southwest-facing section of slot through possible field drain [5002] (5004).	ESE	18/04/2019
94	[5002]	Post-excavation plan image of possible field drain [5002] (5004).	ESE	18/04/2019
95	[5001]	Northwest-facing section of slot through possible field drain [5001] (5003).	SW	18/04/2019
96	[5001]	Post-excavation plan image of possible field drain [5001] (5003).	S	18/04/2019
97	Trench	Post-excavation image of Trench 23.	W	18/04/2019
98	Trench	Post-excavation image of Trench 50.	NNW	18/04/2019
99	Trench	Post-excavation image of Trench 51.	N	18/04/2019
100	Trench	Post-excavation image of Trench 52.	S	18/04/2019
101	[801]	Pre-excavation image of pit [801] (802). Note darker lens top right.	SE	19/04/2019
102	[801]	Pre-excavation image of pit [801] (802). Note darker lens bottom left.	NW	19/04/2019
103	[601], [602]	Pre-excavation image of (left to right) pits [601] and [602].	WNW	19/04/2019
104	[601], [602]	Pre-excavation image of (left to right) pits [601] and [602].	WNW	19/04/2019
105	[601]	Pre-excavation image of pit [601].	NNE	19/04/2019

Photo No.	Trench/ Feature No.	Description	Direction Facing	Date
106	[602]	Pre-excavation image of pit [602].	SSW	19/04/2019
107	[601]	North-northeast-facing section of pit [601].	SSE	19/04/2019
108	[601]	North-northeast-facing section of pit [601].	SSE	19/04/2019
109	[601]	Post-excavation plan image of pit [601].	NNE	19/04/2019
110	[801]	South-southwest-facing section of pit [801].	NNE	19/04/2019
111	[801]	Post-excavation image of pit [801].	W	19/04/2019
112	[602]	Northwest-facing section of pit [602] (604).	SW	19/04/2019
113	[602], [601]	Post-excavation image of pits [601] and [602].	SW	19/04/2019
114	[602], [601]	Post-excavation image of pits [601] and [602].	E	19/04/2019
115	[602], [601]	Post-excavation image of pits [601] and [602].	E	19/04/2019
116	[602]	Post-excavation image of pit [602].	SW	19/04/2019
117	[2601]	Mid-excavation image of stone-filled pit [2601] (2602).	W	19/04/2019
118	[2601]	Post-excavation image of stone-filled pit [2601] (2602).	W	19/04/2019
119	[3404]	General shot of large linear/pit [3404].	NE	19/04/2019
120	[3404]	General shot of large linear/pit [3404].	NE	19/04/2019
121	[3404]	General shot of large linear/pit [3404].	E	19/04/2019
122	[3404]	General shot of large linear/pit [3404].	N	19/04/2019
123	[3404]	General shot of large linear/pit [3404].	W	19/04/2019
124	[3404]	General shot of large linear/pit [3404].	SSE	19/04/2019
125	[3404]	Mid-excavation image of Slot 3 through large linear/pit [3404].	E	19/04/2019
126	[3404]	Mid-excavation image of Slot 2 through large linear/pit [3404].	SW	19/04/2019
127	[3404]	Mid-excavation image of Slots 2 and 3 through large linear/pit [3404].	SSE	19/04/2019
128	[3404]	Mid-excavation image of Slots 2 and 3 through large linear/pit [3404].	NNW	19/04/2019
129	[3404]	Mid-excavation image of Slot 1 through large linear/pit [3404].	SSW	19/04/2019
130	[3404]	Mid-excavation image of Slot 1 through large linear/pit [3404].	SE	19/04/2019
131	[3404]	East-facing section of Slot 1 through [3404].	W	22/04/2019
132	[3404]	North-facing section of Slot 1 through [3404].	S	22/04/2019

Photo No.	Trench/ Feature No.	Description	Direction Facing	Date
133	[3404]	General image of Slot 1 through [3404].	NW	22/04/2019
134	[3404]	General image of Slot 1 through [3404].	NW	22/04/2019
135	[3404]	West-facing section of Slot 2 through [3404].	E	22/04/2019
136	[3404]	General image of Slot 2 through [3404].	N	22/04/2019
137	[3404]	West-facing section of Slot 2 through [3404].	SE	22/04/2019
138	[3404]	West-facing section of Slot 2 through [3404].	E	22/04/2019
139	[3404]	West-facing section of Slot 2 through [3404].	E	22/04/2019
140	[3404]	General image of Slot 2 through [3404].	N	22/04/2019
141	[3404]	General image of [3404]. Slot 2 front, Slot 3 back.	N	22/04/2019
142	[3404]	East-facing section of Slot 2 through [3404].	W	22/04/2019
143	[3404]	East-facing section of Slot 2 through [3404].	W	22/04/2019
144	[3404]	General image of Slot 2 through [3404].	SW	22/04/2019
145	[3201]	Post-excavation image of firepit [3201].	S	22/04/2019
146	[3201]	Post-excavation image of firepit [3201].	E	22/04/2019
147	[3201]	Post-excavation image of firepit [3201].	E	22/04/2019
148	[3201]	Post-excavation image of firepit [3201].	N	22/04/2019
149	[3201]	Post-excavation image of firepit [3201].	N	22/04/2019
150	[3201]	Post-excavation image of firepit [3201].	N	22/04/2019
151	[3201]	Post-excavation image of firepit [3201].	N	22/04/2019
152	[3201]	Post-excavation image of firepit [3201].	SW	22/04/2019
153	[801]	Post-excavation image of pit [801].	NWW	22/04/2019
154	[801]	Post-excavation image of pit [801].	SEE	22/04/2019
155	[602]	Post-excavation image of pit [602].	W	22/04/2019
156	[602]	Post-excavation image of pit [602].	NW	22/04/2019

Photo No.	Trench/ Feature No.	Description	Direction Facing	Date
157	[602], [601]	Post-excavation image of pits [602] and [601].	NW	22/04/2019
158	[601]	Post-excavation image of pit [601].	E	22/04/2019
159	[601], [602]	Post-excavation image of pits [601] and [602].	E	22/04/2019
160	[3404]	Extension of Slots 2 and 3 through (3403).	E	22/04/2019
161	[3404]	Extension of Slots 2 and 3 through (3403).	N	22/04/2019
162	[3404]	Extension of Slots 2 and 3 through (3403).	S	22/04/2019
163	[3404]	Extension of Slots 2 and 3 through (3403).	W	22/04/2019
164	[3404]	W-Facing section of Extended Slot 2/3 through [3404].	E	23/04/2019
165	[3404]	W-Facing section of Extended Slot 2/3 through [3404].	E	23/04/2019
166	[3404]	General image of [3404]. Slots visible.	NNE	23/04/2019
167	[3404]	General image of [3404]. Slots visible.	NNE	23/04/2019
168	[3404]	East-facing section of Extended Slot 2/3 through [3404].	W	23/04/2019
169	[3404]	General image of [3404]. Slots visible.	W	23/04/2019
170	[3404]	General image of Extended Slot 2/3 through [3404].	S	23/04/2019
171	[3404]	General image of Extended Slot 2/3 through [3404].	N	23/04/2019
172	[3404]	East-facing, close-up section of Extended Slot 2/3 through [3404].	W	23/04/2019
173	[3404]	East-facing, close-up section of Extended Slot 2/3 through [3404].	W	23/04/2019
174	[3404]	East-facing, close-up section of Extended Slot 2/3 through [3404].	W	23/04/2019
175	[3404]	West-facing, close-up section of Extended Slot 2/3 through [3404].	E	23/04/2019
176	[3404]	West-facing, close-up section of Extended Slot 2/3 through [3404].	E	23/04/2019
177	[3404]	West-facing, close-up section of Extended Slot 2/3 through [3404].	E	23/04/2019
178	Cist area	General image of cists after deturfing of area.	W	24/04/2019
179	Cist area	General image of cists after deturfing of area.	S	24/04/2019
180	Cist area	General image of cists after deturfing of area.	NE	24/04/2019

Photo No.	Trench/ Feature No.	Description	Direction Facing	Date
181	Cist area	General image of cists after deturfing of area.	NNW	24/04/2019
182	-	General view of site post-works.	S	24/04/2019
183	-	General view of site post-works.	-	24/04/2019
184	-	General view of site post-works.	S	24/04/2019
185	-	General view of site post-works.	S	24/04/2019
186	-	General view of site post-works.	S	24/04/2019
187	-	General view of site post-works.	S	24/04/2019
188	-	General view of site post-works.	S	24/04/2019
189	-	General view of site post-works.	S	24/04/2019
190	Cist area	Close-up image of cist slabs.	NE	24/04/2019
191	Cist area	Close-up image of cist slabs.	S	24/04/2019
192	Cist area	Close-up image of cist slabs.	E	24/04/2019
193	Cist area	Close-up image of cist slabs.	S	24/04/2019
194	003, 004, 007, 008	Pre-excavation image of cists.	S	01/05/2019
195	003, 004, 007, 008	Pre-excavation image of cists.	SE	01/05/2019
196	003, 004, 007, 008	Pre-excavation image of cists.	E	01/05/2019
197	003, 004, 007, 008	Pre-excavation image of cists.	NE	01/05/2019
198	003, 004, 007, 008	Pre-excavation image of cists.	NE	01/05/2019
199	003, 004, 007, 008	Pre-excavation image of cists.	NE	01/05/2019
200	003, 004, 007, 008	Pre-excavation image of cists.	N	01/05/2019
201	003, 004, 007, 008	Pre-excavation image of cists.	N	01/05/2019
202	003, 004, 007, 008	Pre-excavation image of cists.	NW	01/05/2019
203	003, 004, 007, 008	Pre-excavation image of cists.	W	01/05/2019
204	003, 004, 007, 008	Pre-excavation image of cists.	W	01/05/2019
205	003, 004, 007, 008	Pre-excavation image of cists.	SW	01/05/2019
206	003	Pre-excavation image of Cist 2.	NW	01/05/2019
207	004	Pre-excavation image of Cist 1	SE	01/05/2019
208	007	Capstone 1.	SW	01/05/2019
209	007	Capstone 2.	NNE	01/05/2019
210	007	Capstone 3.	WSW	01/05/2019
211	003, 004	Pre-excavation image of cists. Capstones removed.	S	01/05/2019

Photo No.	Trench/ Feature No.	Description	Direction Facing	Date
212	003, 004	Pre-excavation image of cists. Capstones removed.	SE	01/05/2019
213	003, 004	Pre-excavation image of cists. Capstones removed.	E	01/05/2019
214	003, 004	Pre-excavation image of cists. Capstones removed.	N	01/05/2019
215	003, 004	Pre-excavation image of cists. Capstones removed.	NW	01/05/2019
216	003, 004	Pre-excavation image of cists. Capstones removed.	W	01/05/2019
217	003, 004	Pre-excavation image of cists. Capstones removed.	SW	01/05/2019
218	004	Close-up pre-excavation image of Cist 1. Capstones removed.	SE	01/05/2019
219	004	Close-up pre-excavation image of Cist 1. Capstones removed.	SW	01/05/2019
220	003, 004	Pre-excavation image of cists. Capstones and rubble removed.	S	02/05/2019
221	003, 004	Pre-excavation image of cists. Capstones and rubble removed.	SE	02/05/2019
222	003, 004	Pre-excavation image of cists. Capstones and rubble removed.	E	02/05/2019
223	003, 004	Pre-excavation image of cists. Capstones and rubble removed.	NE	02/05/2019
224	003, 004	Pre-excavation image of cists. Capstones and rubble removed.	N	02/05/2019
225	003, 004	Pre-excavation image of cists. Capstones and rubble removed.	NW	02/05/2019
226	003, 004	Pre-excavation image of cists. Capstones and rubble removed.	W	02/05/2019
227	003, 004	Pre-excavation image of cists. Capstones and rubble removed.	SW	02/05/2019
228	-	Working shots, excavating cists.	-	02/05/2019
229	-	Working shots, excavating cists.	-	02/05/2019
230	-	Working shots, excavating cists.	-	02/05/2019
231	-	Working shots, excavating cists.	-	02/05/2019
232	003, 004	Post-excavation overall view image of cists.	NNW	02/05/2019
233	003, 004	Post-excavation overall view image of cists.	NW	02/05/2019
234	003, 004	Post-excavation overall view image of cists.	W	02/05/2019
235	003, 004	Post-excavation overall view image of cists.	SW	02/05/2019

Photo No.	Trench/ Feature No.	Description	Direction Facing	Date
236	003, 004	Post-excavation overall view image of cists.	SSE	02/05/2019
237	003, 004	Post-excavation overall view image of cists.	SE	02/05/2019
238	003, 004	Post-excavation overall view image of cists.	SE	02/05/2019
239	003, 004	Post-excavation overall view image of cists.	NE	02/05/2019
240	003, 004	Post-excavation overall view image of cists.	N	02/05/2019
241	003, 004	Post-excavation overall view image of cists.	N	02/05/2019
242	003	Post excavation plan view image of Cist 2.	NW	02/05/2019
243	003	Post-excavation image of Cist 2, interior Southeast-facing slab.	NW	02/05/2019
244	003	Post-excavation image of Cist 2, interior Southeast-facing slab.	NW	02/05/2019
245	003	Post-excavation image of Cist 2, interior Southwest-facing slab.	NE	02/05/2019
246	003	Post-excavation image of Cist 2, interior Northwest-facing slab.	SE	02/05/2019
247	003	Post-excavation image of Cist 2, interior Northeast-facing slab.	SW	02/05/2019
248	004	Post excavation plan view image of Cist 1.	SSE	02/05/2019
249	004	Post-excavation image of Cist 1, interior Northwest-facing slab.	SE	02/05/2019
250	004	Post-excavation image of Cist 1, interior Northeast-facing slab.	SW	02/05/2019
251	004	Post-excavation image of Cist 1, interior Southeast-facing slab.	NW	02/05/2019
252	004	Post-excavation image of Cist 1, interior Southwest-facing slab.	NE	02/05/2019
253	004	Post-excavation image of Cist 1, North quadrant.	SE	03/05/2019
254	004	Post-excavation image of Cist 1, North quadrant.	SW	03/05/2019
255	004	Post-excavation image of Cist 1, North quadrant.	S	03/05/2019
256	004	Post-excavation image of Cist 1, South quadrant.	NW	03/05/2019
257	004	Post-excavation image of Cist 1, South quadrant.	N	03/05/2019

Photo No.	Trench/ Feature No.	Description	Direction Facing	Date
258	003	Post-excavation image of Cist 2, East quadrant.	W	03/05/2019
259	003, 004	Post-excavation image of cists 1 and 2.	NW	03/05/2019
260	003	Post-excavation of Cist 2, West quadrant.	SE	03/05/2019
261	003	Post-excavation of Cist 2, West quadrant.	NE	03/05/2019
262	003, 004	Post-excavation overall image of cists 1 and 2.	NE	03/05/2019
263	003, 004	Post-excavation overall image of cists 1 and 2.	S	03/05/2019
264	003, 004	Post-excavation overall image of cists 1 and 2.	SW	03/05/2019
265	003, 004	Post-excavation overall image of cists 1 and 2.	W	03/05/2019
266	003, 004	Post-excavation overall image of cists 1 and 2.	NW	03/05/2019
267	003, 004	Post-excavation overall image of cists 1 and 2.	N	03/05/2019
268	003, 004	Post-excavation image of Cist 2, East quadrant and Cist 1, South quadrant	NW	03/05/2019
269	003	Post-excavation image of Cist 2, East quadrant.	SW	03/05/2019
270	004	Post-excavation image of Cist 1, South quadrant.	N	03/05/2019

Appendix 4 List of Samples

Context no.	Size	Comments
005	10L	1 tub; base of cist 2 under large slab. This could be in situ deposit if the large slab was not moved during 1930s excavation
006	10L	1 tub; base of cist 1.
603	20L	2 tubs
604	20L	2 tubs
802	20L	2 tubs
2602	10L	1 tub
3202	20L	2 tubs
3203	10L	1 tub
3407	60L	6 tubs; shell fragments
4802	10L	1 tub
4901	20L	2 tubs

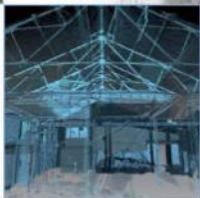
Appendix 5 List of Drawings

Drawing No.	Sheet No.	Description	Scale	Date
001	1	West-facing section of pit [3201] (3202).	1:10	18/04/2019
002	1	Post-excavation plan of pit [3201] (3202).	1:20	18/04/2019
003	1	Southwest-facing section of pit [4801] (4802).	1:10	18/04/2019
004	1	Post-excavation plan of pit [4801] (4802).	1:20	18/04/2019
005	1	Northeast-facing section of slot through possible field drain [5001] (5003).	1:20	18/04/2019
006	1	West-southwest-facing section of slot through possible field drain [5002] (5004).	1:20	18/04/2019
007	1	North-northeast-facing section of pit [601] (603).	1:10	19/04/2019
008	1	Post-excavation plan of pit [601] (603).	1:20	19/04/2019
009	1	South-southwest-facing section of pit [801] (802).	1:20	19/04/2019
010	1	Post-excavation plan of pit [801] (802).	1:10	19/04/2019
011	1	Northeast-facing section of pit [602] (604).	1:10	19/04/2019
012	1	Post-excavation plan of pit [602] (604).	1:20	19/04/2019
013	2	North- and West-facing section of Slot 1 through [3404] (3407) .	1:10	22/04/2019
014	2	West-facing section of Slot 3 through [3404].	1:10	22/04/2019
015 Part A	3	West-facing section of extended slot through [3404] (3407) (3408) (3409) (3410).	1:10	23/04/2019
015 Part B	2	West-facing section of extended slot through [3404] (3407) (3410) (3408).	1:10	23/04/2019
016	3	West-facing section of Slot 1 through [3404] (3407) (3408).	1:10	22/04/2019
017	4	Pre-excavation plan of cist 1 [003] and cist 2 [004].	1:20	01/05/2019

Drawing No.	Sheet No.	Description	Scale	Date
018	5	Pre-excavation plan of cists with capstones [007] removed.	1:20	01/05/2019
019	6	Post-excavation plan of cist 1 [003] and cist 2 [004].	1:20	02/05/2019
020	7	Northwest-facing section of cist 1 [003] and cist 2 [004].	1:20	02/05/2019
021	7	Northeast-facing section of cist 1 [004].	1:10	03/05/2019
022	7	Southwest-facing section of cist 2 [003].	1:10	03/05/2019

Appendix 6 List of Small Finds

Find No.	Context No.	Material	Description
001	(3407)	Animal bone	Multiple fragments of animal bone.
002	(3407)	Shell	Multiple shell fragments.
003	(3407)	Pot	5 x Pot sherds.
006	(5003)	Lithic	1 x piece of flint debitage.
008	(3404)	Animal bone	4 x Fragments of animal bone/teeth
009	(001) T35	Pot	1 x Glazed pot sherd
010	(603)	Pot	3 x Pot sherds; 2 white; 1 red.
011	(604)	Slate	1 x Fragment of slate with nail hole at edge.
012	(4901)	Lithic	3 x flint flakes.
013	(005)	Bone	1 x fragment of socket bone from basal fill of cist 2.
014	(006)	Metal	2 x Metal fragments from upper fill of cist 1.
015	(006)	Plant	2 x Puff Balls (Fungal plant) from basal fill of cist 1.



AOC Archaeology (Inverness) The Old Estate Offices Rosehaugh Estate Avoch Ross-shire IV8 9RF
 | **tel:** 01463 819 841 | **mob:** 07972 259 255 | **e-mail:** inverness@aocarchaeology.com

www.aocarchaeology.com