

	CO.TT. 92/10		
TTDB. 2010/109	TREASURE TROVE		No finds: 1

Artefact type: Pin	Period/Culture:	Date: c.10-12 <sup>th</sup> century	
-----------------------	-----------------	-------------------------------------------	--

Findspot: Belladrum	NGR: NH 52 79
---------------------	---------------

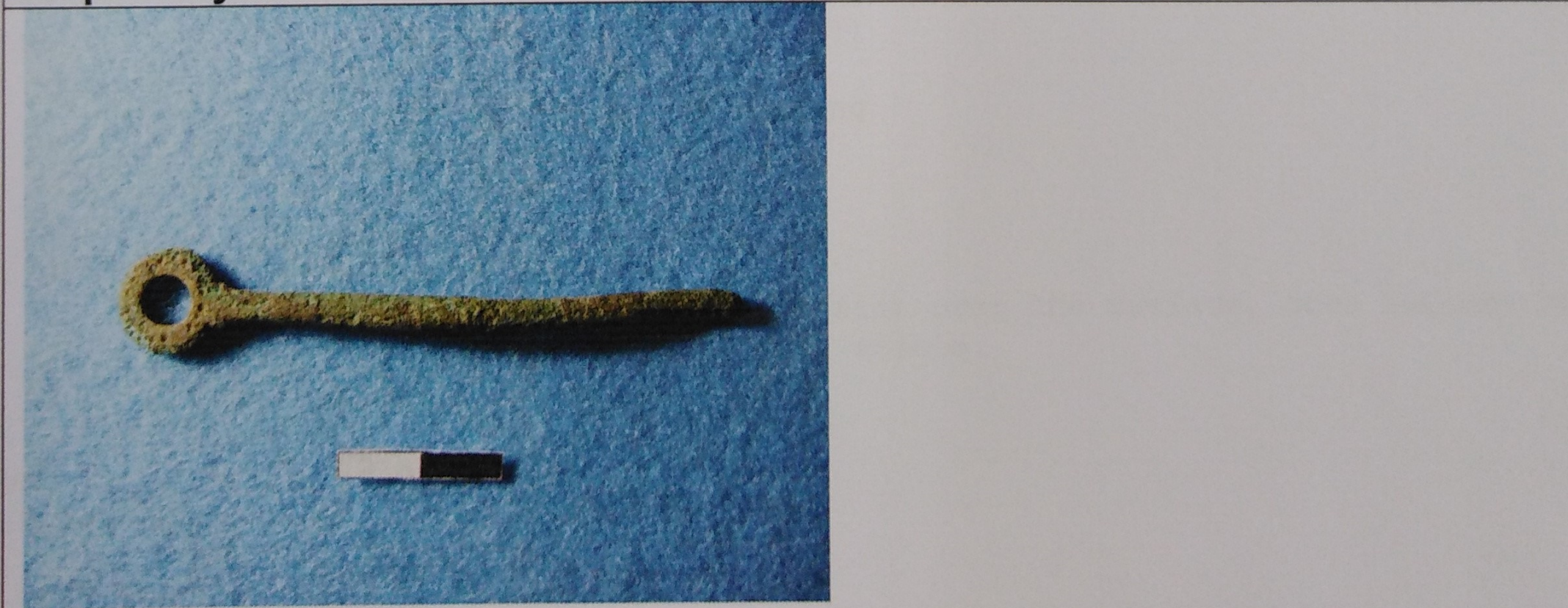
Place: Kiltarlity	Local Authority: Highland
-------------------	---------------------------

Method of discovery: archaeological intervention/chance/**metal-detecting**  
(Highlight as bold)

**Artefact(s) description:**

A copper alloy dress pin of Early Historic or medieval date. This appears as a variation of the common disc headed pin with lappets at the base of the shaft. However this example has a hole at the centre of the head with punched dots around the perimeter. It is also rather large, but an example of similar dimensions –though with solid head- has been excavated in Perth. The exact dating of copper alloy dress pins is in something of a fluid state, the automatic assumption that they must be Early Historic has been called into question by recent finds in 12<sup>th</sup> century contexts. In this sense it seems that in Ireland and Scotland at least dress pins may bridge the gap between the demise of classic styles of Early Historic material culture and the appearance of ‘high medieval’ artefacts like annular brooches. While some of these pins appear to have a genuine Early Historic pedigree others are found in 12<sup>th</sup> or even 13<sup>th</sup> century contexts. It is however one of the simpler pin types and given the wide variation even within this simple category it wholly possible that pins of this type were in use for a relatively long period.

Report by: Fraser Hunter & Stuart Campbell



Digital photographs © Crown copyright

Panel date: 21<sup>st</sup> March 2011

Museum allocation: