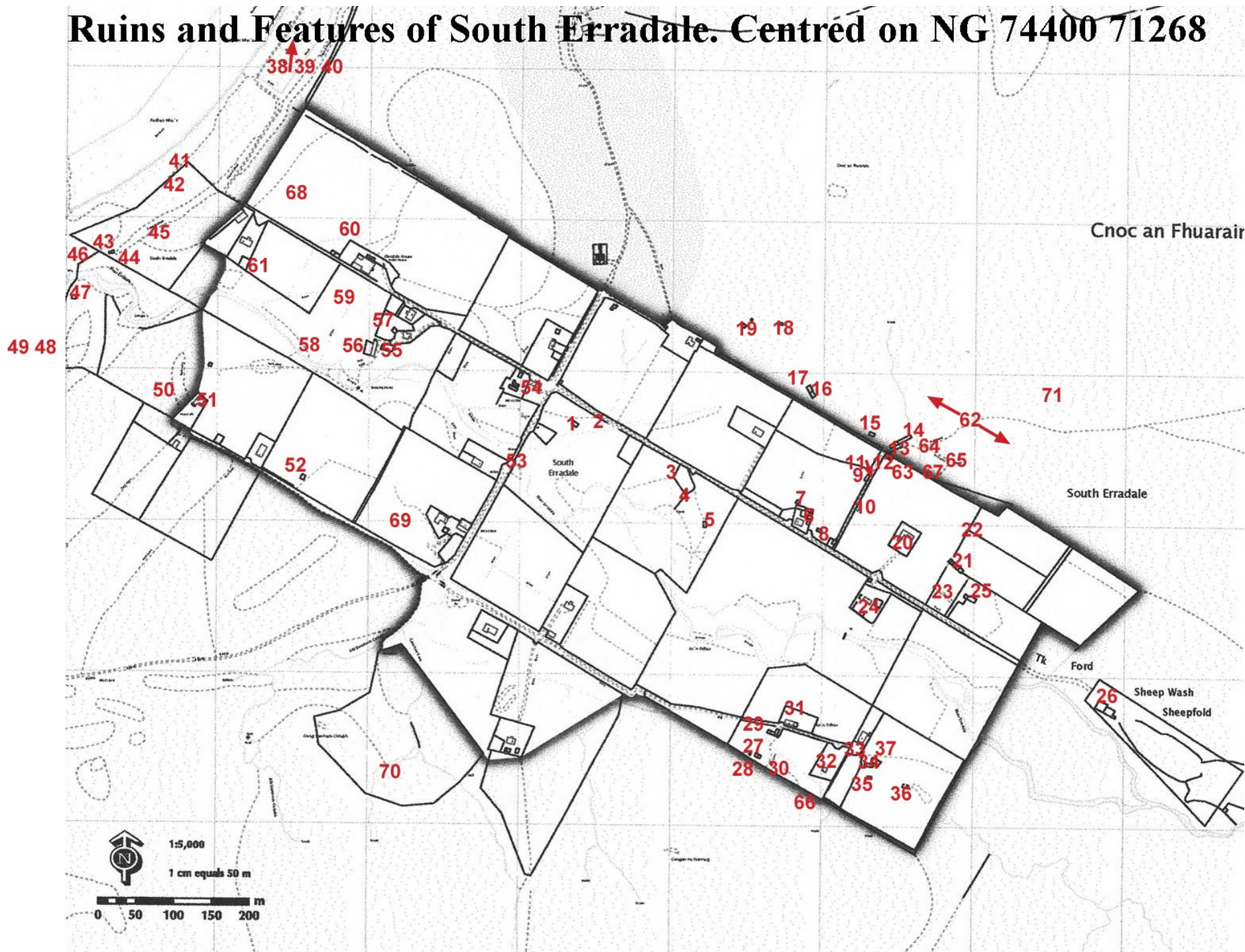


The Ruins and Features of South Erradale



Centred on
NG 74400 71268

Ruins and Features of South Erradale. Centred on NG 74400 71268



1 NG 74472 71316 24m ruined house and enclosure



2 NG 74513 71319 24m footings of ruined building



3 NG 74628 71250 24m footings of wall, possible building, shown on 1st OS as building with garden



4 NG 74645 71219 22m Possible quarry pit with circle in middle ? kiln or tattie pit



5 NG 74652 71187 24m ruined barn



6 NG 74788 71200 24m ruined house and barn known as 'Am Peig's'



7 NG 74787 71205 28m ruins of two buildings to rear of 6, one a possible Kiln



8 NG 74818 71167 30m ruined barn



9 NG 74861 71250 29m ruined house



10 NG 74823 71171 30m paved track which was part of old main access to township



11 NG 74873 71261 30m stone bridge



12 NG 74892 71276 29m ruined building



13 NG 74902 71289 36m

enclosure wall alongside track to Badachro



14 NG 74906 71294 39m

Large ruin of house and barn and stable.



15 NG 74867 71310 34m
known as the 'bull pen'

ruin of barn built on earlier footings on platform



16 NG 74783 71362 34m
drain

two compartment ruin with attached byre with



17 NG 74765 71378 39m

footings of building



18 NG 74747 71452 38m

ruin of small building. Lady called Anna' n t—
Savir lived here. Brought first Regents potetoes to
the township.



19 NG 74696 71449 37m footings of building with attached enclosure



20 NG 74897 71157 30m house from 1st OS modernised



21 NG 74981 71136 29m group of 4 barns



22 NG 74981 71250 31m Stone walls



23 NG 74962 71098 35m Footings of building



24 NG 74365 71111 31m modernised croft house 'Flora's house'



25 NG 74995 71089 34m Ruined building



26 NG 75180 70947 37m Fank



27 NG 74646 70928 29m Ruined house and byre



28 NG 74633 70910 28m Footings of ruin



29 NG 74738 70913 21m ruined barn



30 NG 74722 70880 27m two compartment ruin



31 NG 74757 70928 26m House



32 NG 74826 70866 28m Wall containing a lot of bog iron



33 NG 74866 70867 29m ruined house



34 NG 74863 79853 28m Barn built on platform



35 NG 74883 70838 37m footings



36 NG 74914 70842 35m ruined barn



37 NG 74822 70855 32m Well



38 NG 74172 71938 13m covered well



39 NG 74164 71942 9m the first water tank in South Erradale water came from well



40 NG 74161 71947 5m House—renovated fishing bothy



41 NG 73963 71664 5m old township head dyke running on to and above beach



42 NG 73963 71664 5m plies of stone clearance at same place



43 NG 73865 74543 11m old bothy/henhouse



44 NG 73881 71539 16m Wellie rock where people used to tuck wellies in to keep dry



45 NG 73970 71566 20m footings of building marked on 1st OS



46 NG 73316 71544 7m Well



47 NG 73810 71483 4m bulldozed ruin



48 NG 73715 71382 3m old Home Guard hut relocated from Redpoint



49 NG 73696 71381 2m Old slipway



50 NG 73950 71356 19m Footings and lintel stone



51 NG 73975 71349 20m house marked on 2nd OS



52 NG 74120 71246 23m

footings of house known as 'America' as it was so far from associated croft land



53 NG 74400 71268 16m

South Erradale bridge



54 NG 74427 71374 17m

known house now barn



55 NG 74231 71415 15m

partial ruin of house and footings of barn with stackyard. Corn was stacked around a harrow



56 NG 74213 71417 13m

barn/stable



57 NG 74254 71428 15m

house



58 NG 74133 71473 14m footings



59 NG 74154 71506 16m footings



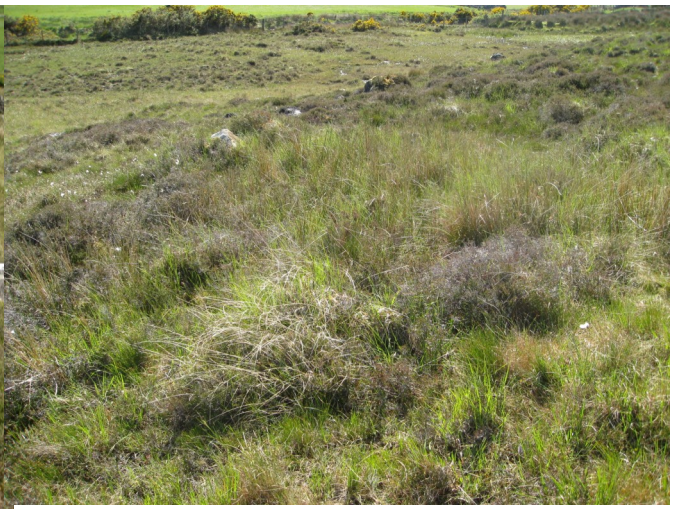
60 NG 74189 71577 17m ‘ Macleod’s house ‘ possible farm factors house but area also used as horses burial ground



61 NG 74055 71525 11m Footings of building in bank ? Possible kiln



62 NG 71324 74887 37m, NG 75005 71282 31m, NG 75082 71248 37m,
NG 75090 71237 35m
Group of four turf buildings outside head dyke where original settlement pre
Gairloch estate map are situated



63 NG 74903 71268 27m Stone bridge width 5m



64 NG 74929 71292 30m Stone bridge width 4m



65 NG 75056 71238 28m Bank where clay for pointing houses was dug out



66 NG 74737 70864 28m ruined building



67 NG 75139 71164 36m very overgrown ruin



68 NG 74130 71658 27m Area used for stacking peats



69 NG 74235 71173 19m Bothan nan uain lambs pen



70 NG 74248 70875 29m slaughter house



71 NG 75107 71404 56m Known infant burial ground

