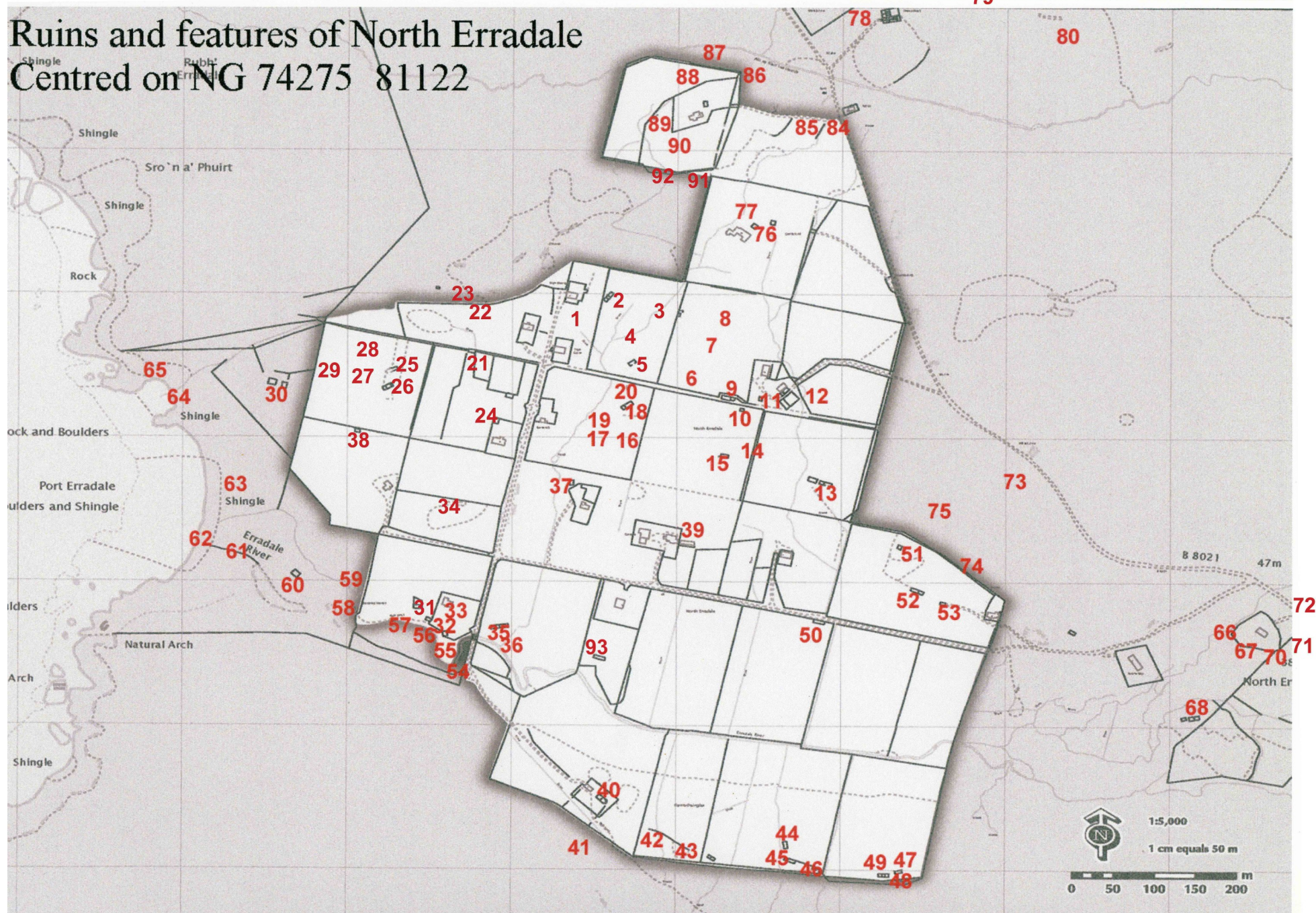


The ruins and features of North Erradale



Centred on NG 74275 81122

Ruins and features of North Erradale Centred on NG 74275 81122



1 NG 74283 81336 34m Enclosure wall



2 NG 74322 81383 49m Ruined house and byre



3 NG 74393 81338 48m Ruins of a group of 4 buildings



4 NG 74356 81333 44m Well



5 NG 74343 81287 43m Ruined house and byre



6 NG 74455 81288 50m Ruined house and byre



7 NG 74456 81326 53m Footings of buildings



8 NG 74487 81372 56m Well



9 NG 74467 81243 48m Ruined house and barn



10 NG 74485 81226 45m Barn



11 NG 74511 81230 46m Barn



12 NG 74559 81236 49m Flood prevention banking



13 NG 74568 81125 42m Ruined house and barn



14 NG 74485 81175 44m Croft wall



15 NG 74459 81163 41m Barn



16 NG 74419 81175 39m Well



17 NG 74349 81213 41m Well or stone clearance



18 NG 74342 81229 38m Ruined two compartment building



19 NG 74319 81225 40m Ruin of small building possible kiln



20 NG 74346 81257 37m Ruined Building with attached platform



21 NG 74151 81307 49m Barn



22 NG 74116 81383 52m Enclosure wall to N. of head dyke



23 NG 74114 81396 54m Ruined building



24 NG 74165 81255 47m Large pile of stones



- 25 NG 74057 81279 44m 2 compartment building attached by wall to 26 with enclosure up to head dyke



- 26 NG 74050 81254 42m 2 compartment ruined building



- 27 NG 74014 81289 49m Kerbed pile of stones ?



28 NG 74018 81317 50m Pile of stones



29 NG 73996 81288 43m Stones



30 NG73915 81258 37m 2 ruined buildings with several divisions



31 NG 74087 80956 23m Ruined building known stable



32 NG 74098 80933 23m Byre



33 NG 74126 80960 26m Croft house



34 NG 74142 81090 32m Footings of building with pit to E.



35 NG 74189 80921 19m Ruined house with barn and byre



36 NG 74211 80920 23m Bridge



37 NG 74275 81122 35m Ruined Barn/byre



38 NG 74018 81199 37m Ruined byre



39 NG74459 81090 33m Old Post Office



40 Unknown unable to access Ruin hidden in trees



41 NG 74321 80576 63m Possible kiln



42 NG 74431 80629 51m Footings of building



43 NG 74446 80606 56m Footings of building



44 NG 74536 80620 45m Footings of building



45 NG 74546 80605 42m Footings of building



46 NG 74574 80593 43m Ruined building



47 NG 74675 80588 41m Ruined barn



48 NG 74682 80577 43m Ruin attached to head dyke



49 NG 74656 80582 39m Ruined 3 compartment building



50 NG 74559 80939 28m Partial ruin



51 NG 74674 81036 41m Large ruin on platform



52 NG 74695 80976 34m House and byre



53 NG 74731 80960 27m Barn



54 Ng 74142 80834 25m Turf wall running along top of embankment



55 NG 74102 80895 20m Kiln



56 NG 74067 80907 21m Footings of building built into slope with infilled pond beside it



57 NG 74039 80904 20m Footings of building built into slope similar size and position to 56



- 58 NG 73989 80887 12m Turf wall beside stream leading to river and stone slab bridge.



- 59 NG 73992 80974 10m Stone slab bridge



- 60 NG 73938 80995 9m On cleared area set back from beach ruin of building with no doors or windows except in gable end. Platform on W. side. It is known by the name 'Cuilag' Known to have been used latterly as winter quarters for tinker family called Miller.



61 NG 73897 81124 9m Stone wall leading from cleared area on to beach



62 NG 73837 81013 7m Stone lined niche set into boulder ledge, known to have housed a saw for cutting logs floated out from Flowerdale Glen Gairloch.



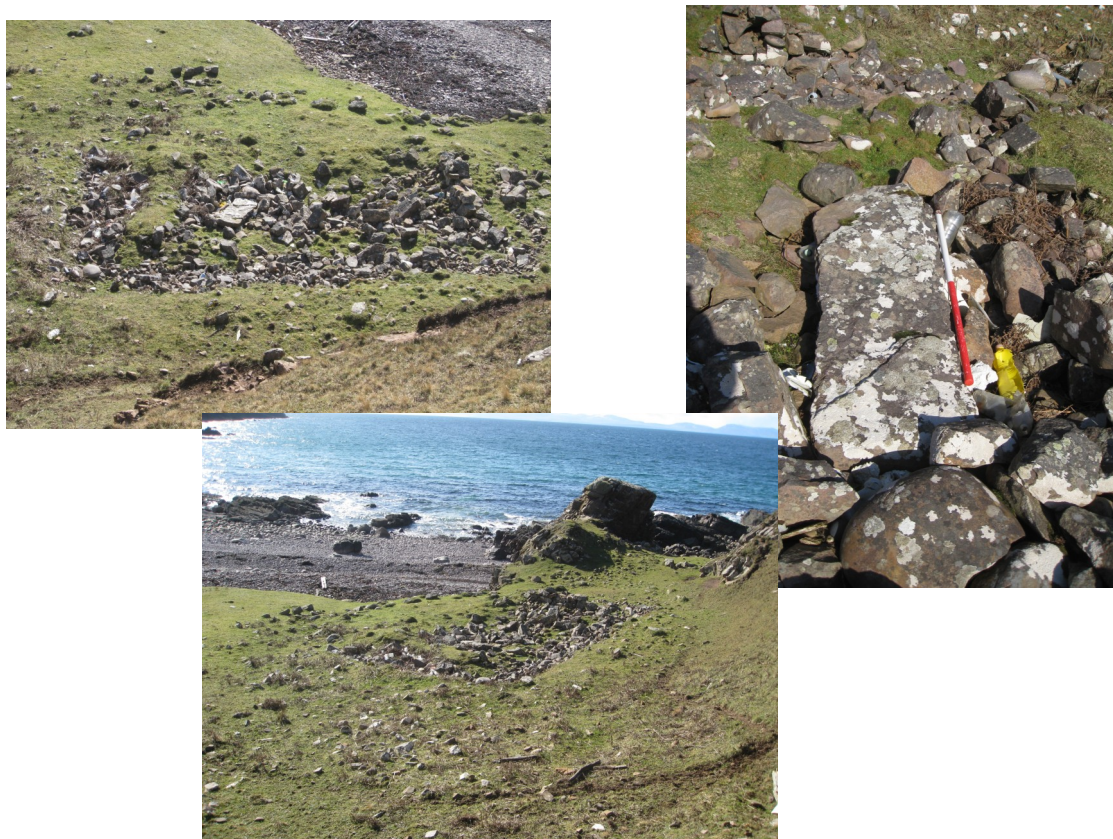
63 NG 73883 81102 9m On cleared area above beach a line of stones running parallel with beach with several stone clearance piles



- 64 NG 73794 81225 4m Around headland from 63 cleared area with a track that leads up slope towards township with walls and embankments beside stream.



- 65 NG 73775 81271 7m Ruined building on cleared area built in to slope measuring 10 x 6 m with a large flat stone in situ.



- 66 NG 75066 80920 33m Area with old enclosure walls and banking beside stream with several stone clearance piles.



- 67 NG 75078 80896 36m Large cairn of stones with attached wall



- 68 NG 75041 80803 36m Ruined building with two compartments



70 NG 75145 80890 45m Field clearance cairn



71 NG 75184 80869 47m Structure with adjoining wall



72 NG 75189 81163 68m Field wall that is divided by road



73 NG 74791 81158 65m Roundhouse with shieling built within it.



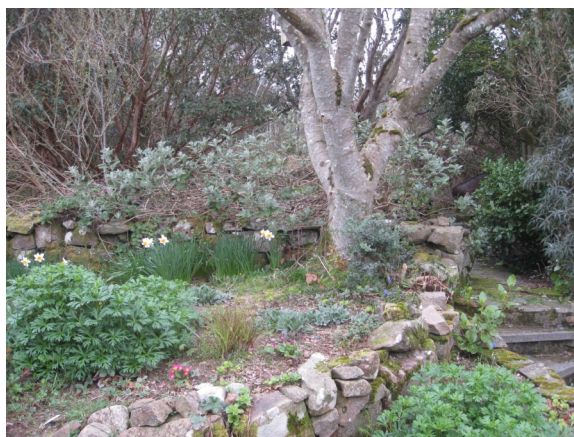
74 NG 74727 81025 49m Large cairn of stones with head dyke constructed over it with two adjoining structures.



75 Ng 74693 81095 47m Footings of turf house



76 NG 74488 81481 56m Ruin of known house truncated



77 NG 74451 81473 55m Stone bridge



78 NG 74616 81803 96m Roundhouse beside fank



79 NG 74706 81845 108m Roundhouse



80 NG 74824 81794 109m Roundhouse



81 NG 74697 81933 115m Roundhouse



82 NG 74454 81943 99m Roundhouse



83 NG 74480 81983 102m Possible Viking house



84 NG 74585 81566 79m Roundhouse



85 NG 74579 81567 77m Enclosure wall attached to 84



86 NG 74459 81704 77m Circle of stones



87 NG 74448 81722 77m Small enclosure or footings?



88 NG 74359 81592 70m Stone structure ? Well



89 NG 74359 81592 70m Stone clearance pile



90 NG 74397 81582 73m Field clearance or possible roundhouse



91 NG 74430 81556 69m
it.

Large cairn of stones with two structures within



92 NG 74369 81554 70m

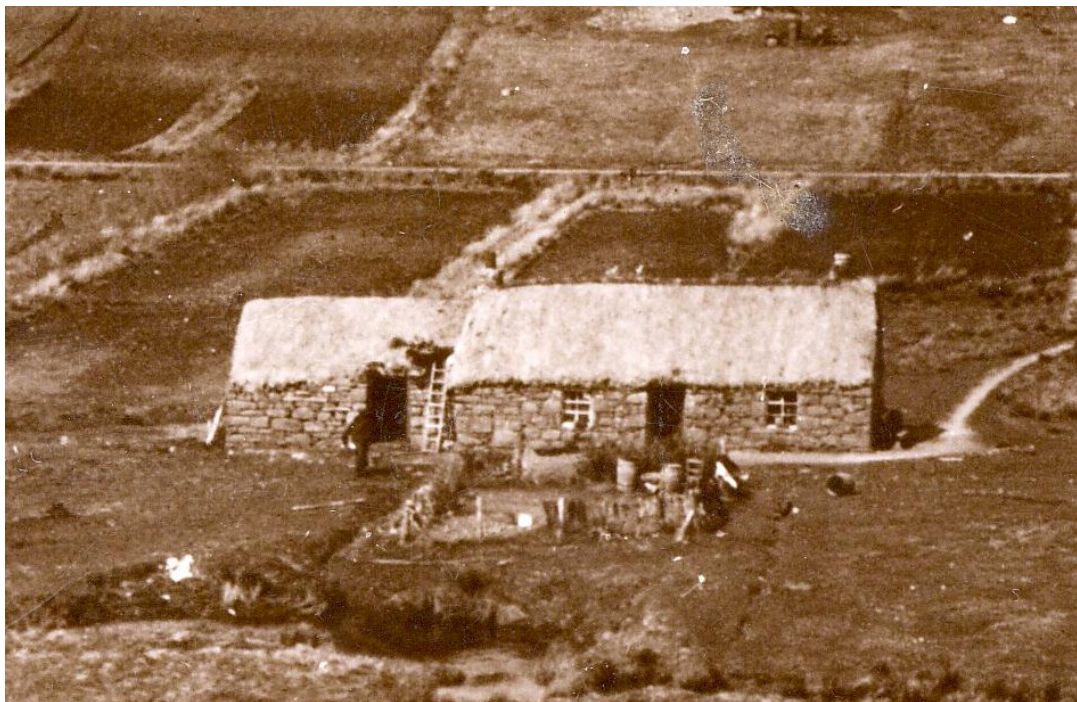
Well as marked on 1st OS map 1875



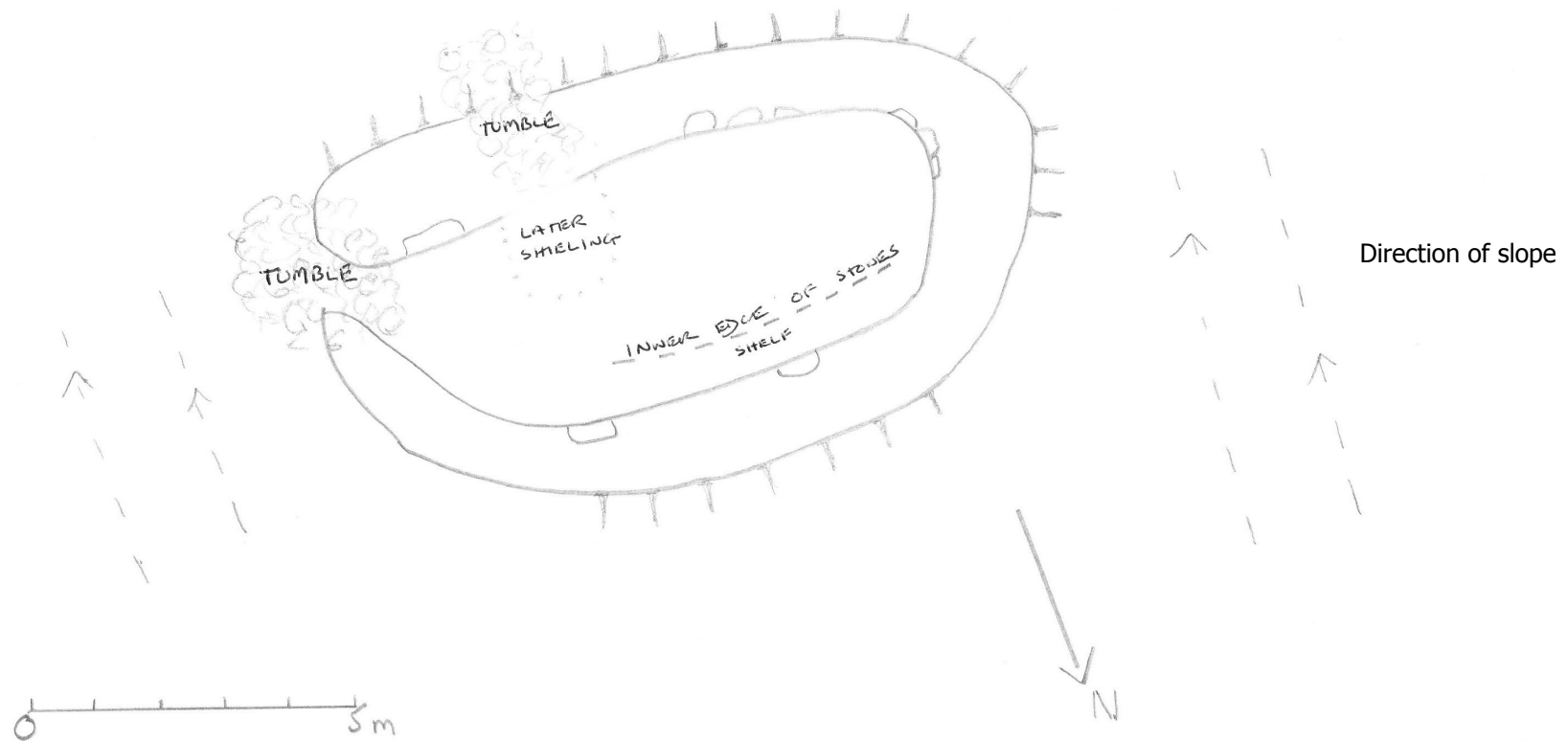
93 NG 743 809 19m Ruins of croft house (footings)



As it looked



Plane table drawing of building at North Erradale, Gairloch. NG 74480 81983 Elevation 102m. Surveyed on 17-05-11 by Anne MacInnes and Anna Welti.



Building at N. Erradale. NG 74480 81983

The remains of this building are situated on a S. facing slope overlooking the sea. Its dimensions are 11m by 6.5m, and the footings have a maximum height of 0.70m. The footings are tumbled especially at the E. end and on a section of the S. wall, but the wall facings can still be seen. The walls appear to be bowed, and inside the N. wall there is an inner line of facing stones perhaps indicating a ledge. The walls are made with boulders of varying size with several larger boulders as shown on the drawing. A later shieling hut has been constructed inside the walls.



Looking from N. To S. Over the ruin

Looking from E. To W.



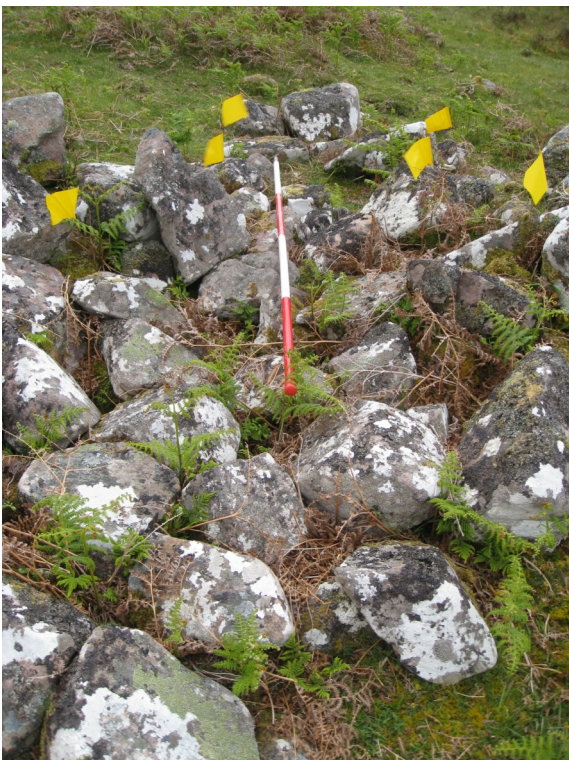
Looking from W. To E.

Building at N. Erradale. NG 74480 81983



Some large boulders on inner wall

Looking at tumble on external side of S. wall

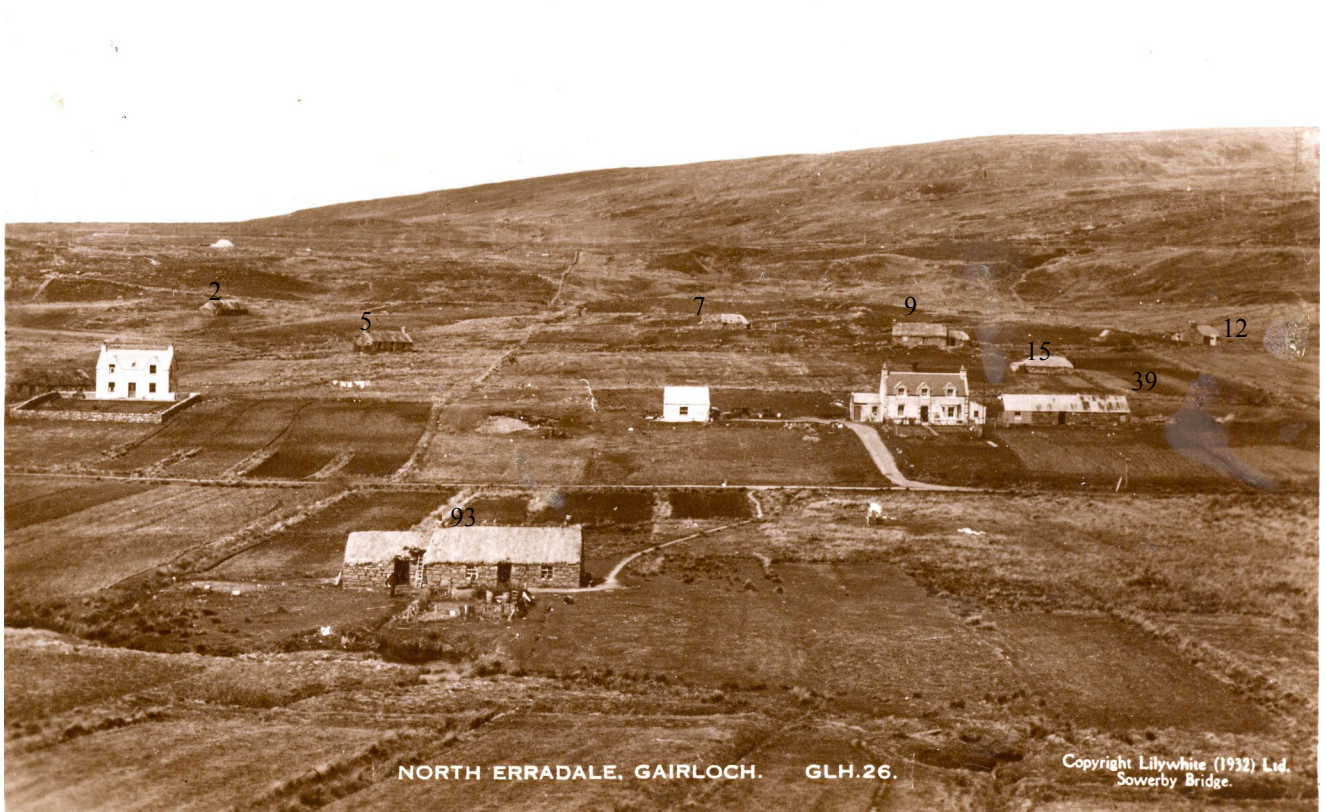


Looking at tumble at E. internal end of building. This may be a possible entrance.

Some old photographs of North Erradale showing some of the buildings.



John, Jessie, Iain, and Normie Bain and in the background 'Flora's House' on croft 19 which is numbered as 13 on the ruins and features map.



Picture taken from croft 1 in approx 1930 showing the buildings in North Erradale. The buildings are numbered as they are on the ruins and features map.



This photograph shows Iain Bain taken at croft 16 North Erradale with buildings 9 and 15 on list of ruins and features in the background.



This photograph shows a distinguished elderly gentleman sitting outside the building that is the ruin numbered 34



This photograph shows Christine Mackenzie sitting with ruins numbered 9 and 15 as they were when roofed.

A photographic record of house and barn croft 16 North Erradale



1911 with the house and barn at the start of reroofing and modernisation



1930 the house and barn are modernised and reroofed



2012 the gable end of house and barn as they are today!