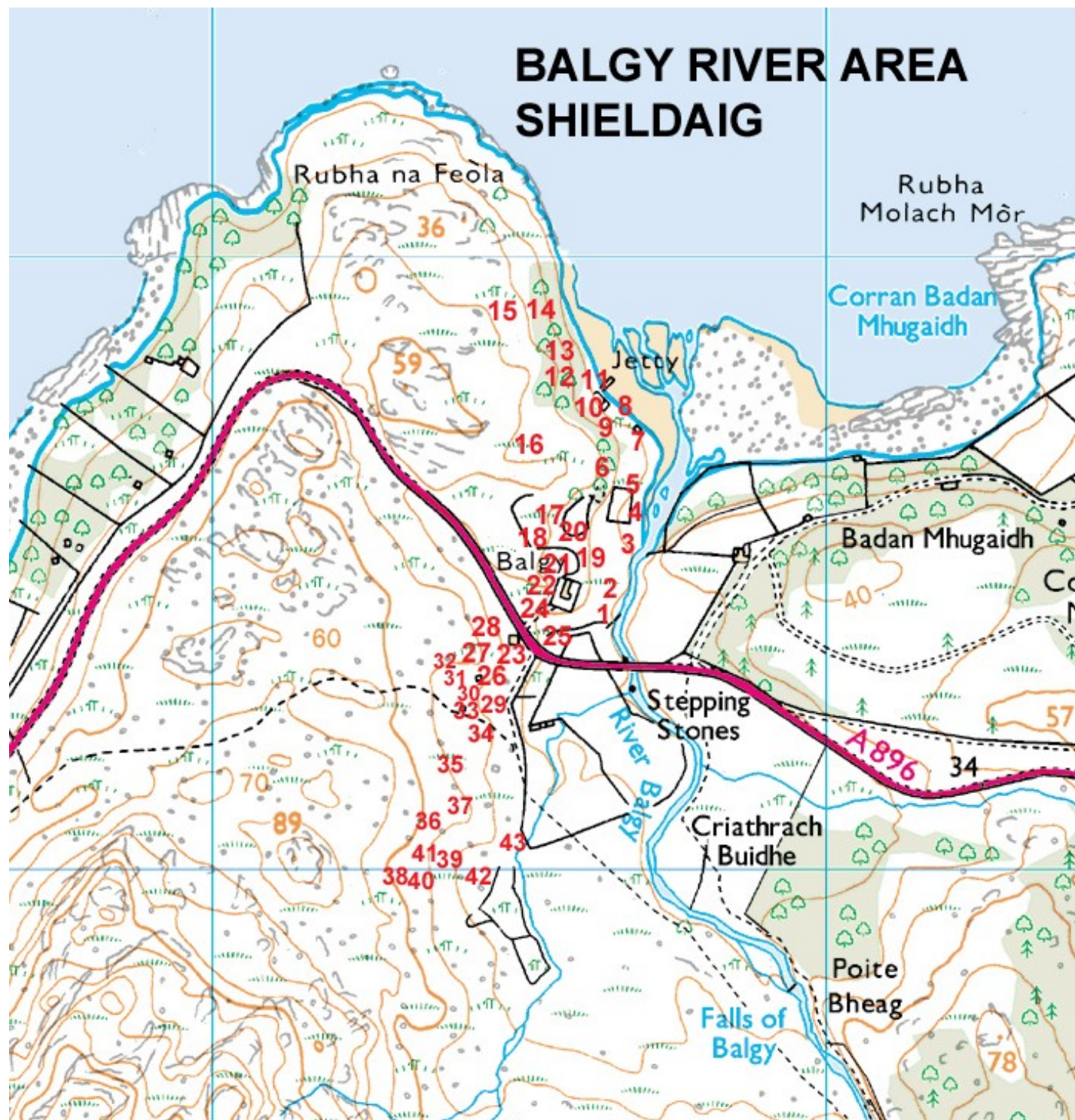


Ruins in the Balgy River area



BALGY RIVER AREA SHIELDAIG



Balgy River Sites

- 1 NG 84670 54415 12m remains of old bridge on the River Balgy



- 2 NG 84685 54568 2m arable area beside river



- 3 NG 84688 54569 2m



- 4 Estate fence in same area



- 5 NG 84680 54576 2m old wall where boats were pulled up and the stops they were tied to



- 6 NG 84672 54667 9m old wall in trees with enclosure above ruin on shore



- 7 NG 84699 54694 2m ruined house on shore with fireplace and visible cruck slots



- 8 NG 84682 54711 1m line of stones on shoreline



- 9 NG 84664 54727 3m stone shelter in trees



10 NG 84654 54735 4m barn with walled garden and enclosure



11 NG 84639 54761 1m jetty



12 NG 84606 54782 3m wall and bothan



13 NG 84601 54805 7m adjacent walls and more bothans



14 NG 84604 54811 4m older building with offset door



15 NG 84537 54802 25m platform



- 16 NG 84544 54766 22m stone dyke which continues to house on shore and over the moor. Possible head dyke



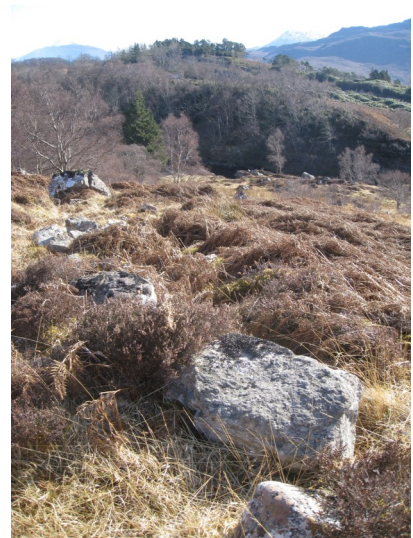
- 17 NG 84581 54588 28m outer boundary wall



- 18 NG 84596 54574 16m inner boundary wall



19 NG 84600 54544 21m building under bracken



20 NG 84568 54550 2m small building with old bottle bank



21 NG 84584 54480 18m possible burial site (local knowledge)



22 NG 84536 54439 28m retaining wall with attached enclosure



23 NG 84497 54355 25m deer larder



24 NG 84499 54414 23m ruined house/barn



25 NG 84521 54375 16m old path which leads to old bridge



26 NG 84486 54331 26m byre dwelling



27 NG 84493 54314 26m footings of building



28 NG 84473 54357 29m walls in area of old fank



29 NG 84467 54319 28m footings of small building



30 NG 84459 54316 30m building with rounded ends



31 NG 84468 54296 29m building with rounded ends



32 NG 84443 54291 30m building



33 NG 84411 54240 35m house with garden and barn with old road running behind it.



34 NG 84452 54211 33m byre dwelling with byre drain built on site of possible roundhouse



35 NG 84447 54128 33m byre dwelling



36 NG 84462 54133 29m fank



37 NG 84496 53889 28m building covered with stone clearance



38 NG 84451 53893 27m bothan



39 NG 84524 54138 22m footings of building



40 NG 84498 54185 16m building



41 NG 84482 54220 22m building



42 NG 84579 54178 20m byre dwelling with stone clearance in it.



43 NG 84632 54151 23m small building with enclosure



Photos showing walls of parcs that are S of road

