

PROPOSED WIND FARM DEVELOPMENT GLEN ULLINISH, SKYE

ARCHAEOLOGICAL DESK-BASED ASSESSMENT AND WALKOVER SURVEY



National Grid Reference	NG 34591 42913 (Centred)
Site Code	GUL12
Author	Lynn Fraser & Mary Peteranna
Report Number	2012-9/GUL12_Rev. 3
Client	Green Cat Renewables Ltd
Date	18-05-2012, Revised 18-6-2013
OASIS No.	rosscrom1-128292

CONTENTS

List of Figures	2
List of Plates	2
Acknowledgements	2
Summary	3
1 Introduction	3
2 Site Location	3
3 Archaeological and Historical Background	5
4 Methodology	5
4.1 Desk-Based Assessment	5
4.2 Walkover Survey	6
5 Results	6
5.1 Desk-Based Assessment	6
5.1.1 Cartographic Sources	6
5.1.2 Highland Council Historic Environment Record	7
5.2 Walkover Survey Results	9
5.2.1 Red Area	9
5.2.2 Orange Area	13
5.2.3 Access Tracks – May 2013	19
5.2.4 Revised Access Tracks – June 2013	21
6 Discussion	21
7 Recommendations	21
8 References	25
Appendix 1 Gazetteer of Archaeological Sites	26
Appendix 2 Index of Photographs	51

LIST OF FIGURES

1 - Location of initial survey areas	4
2 - Location of archaeological features recorded	8
3 - Location of archaeological features in N half of the Red Area	10
4 - Location of archaeological features in S half of the Red Area	11
5 - Plan of sites 3, 7, 9 and 10	12
6 - Location of archaeological features in NE part of the Orange Area	14
7 - Location of archaeological features in SW part of the Orange Area	15
8 - Plan of sites 18 and 33	16
9 - Plan of Dun Arkaig Broch and the structures in the vicinity thereof	17
10 ó Plan of site 12	18
11 ó Location of the archaeological sites along the Access Tracks	19
12 ó Plan of site 16	20
13 ó Proposed wind farm layout and access track layout showing recommendations and buffer zones around Site 17	22
14 ó Proposed wind farm layout showing recommendations and buffer zones	23
15 – Revised access road showing archaeological sites and buffer zones	24

LIST OF PLATES

Cover - General view of the Ose valley

1 - Site 7 to the foreground, site 3 in the background	13
2 - Site 3h with a later twinning pen	13
3 - Site 9	13
4 - Site 1 with later twinning pen	13
5 - Dun Arkaig Broch	18
6 - Dun Arkaig sheepfold	18
7 - Shieling, Site 127, facing NW	21
8 - Shieling or pen, Site 128, facing W	21

Acknowledgements

We wish to thank Rachael Sparrow and Jacqueline Marshall of Green Cat Renewables Ltd for commissioning the work. Fieldwork was carried out by Lynn Fraser and Mary Peteranna. All mapping, unless otherwise stated, is reproduced by permission of ProMap license LIG1044. Imagery reproduced under ESRI licensing and provided by Microsoft Bing Maps.

PROPOSED WIND FARM DEVELOPMENT ARCHAEOLOGICAL DESK-BASED ASSESSMENT AND WALKOVER SURVEY GLEN ULLINISH, SKYE

Summary

This is a revision to a report of an archaeological desk-based assessment and walkover survey carried out between 3 and 5 May 2012 on behalf of Green Cat Renewables Ltd at Glen Ullinish, Skye in advance of a proposed wind farm development. Following amendments to the proposed access track, an additional area was surveyed on 14 June 2013.

The work was undertaken to establish the baseline extent and condition of any archaeological sites on the property, by recording and identifying any features that may be impacted by the proposed wind farm development. The initial survey identified 187 individual archaeological sites, including Post Medieval farmsteads, enclosures, boundary walls, and areas of peat cutting and rig and furrow. The additional survey in June 2013 identified seven new sites: two shielings, two quarries, a possible structure, a boundary dyke and an area of peat cutting. Mitigation measures are proposed to safeguard the sites during the proposed development works.

1. Introduction

- 1.1 A desk-based assessment and walkover survey of the visible archaeological monuments surviving within the boundaries of the proposed wind farm development site (centred at grid reference NG 34519 42913) was carried out by *Ross and Cromarty Archaeological Services* between 3 and 5 May 2012 (Figure 1). A second area was surveyed on 14 June 2013 due to a revision in the proposed access track. The survey was requested on behalf of Green Cat Renewables Ltd because the areas proposed for the wind farm development are located in a landscape with a potential for sites of archaeological significance.
- 1.2 The purpose of the desk-based assessment and archaeological walkover survey was to identify and record the location and nature of any archaeological features of interest prior to the development, whilst assessing any potential adverse impacts and proposing an appropriate strategy of mitigation. The *Scottish Planning Policy 2010*¹ describes how archaeology should be managed when considering planning decisions and determining conditions for developments that have an impact on the historic environment.

2. Site Location

- 2.1 The proposed wind farm development is divided into three areas (Figure 1). The **Red** area lies to the northwest of the River Ose and is a mix of cultivated grassland on the lower slopes, with boggy heath on the upper slopes. The **Orange** area lies to the southeast of the River Ose and, although some of the lower slopes have been cultivated in the past, the whole area is generally boggy heathland. The initial proposed **Access Tracks** run from the A863 in a generally north/north-easterly direction; the northwest track cuts through boggy heathland, whereas the southeast track follows a drier route that has been grazed by livestock. The revised (6/13) access track was located to the west of the initial access track location (Figure 15).

¹ The Scottish Government 2010

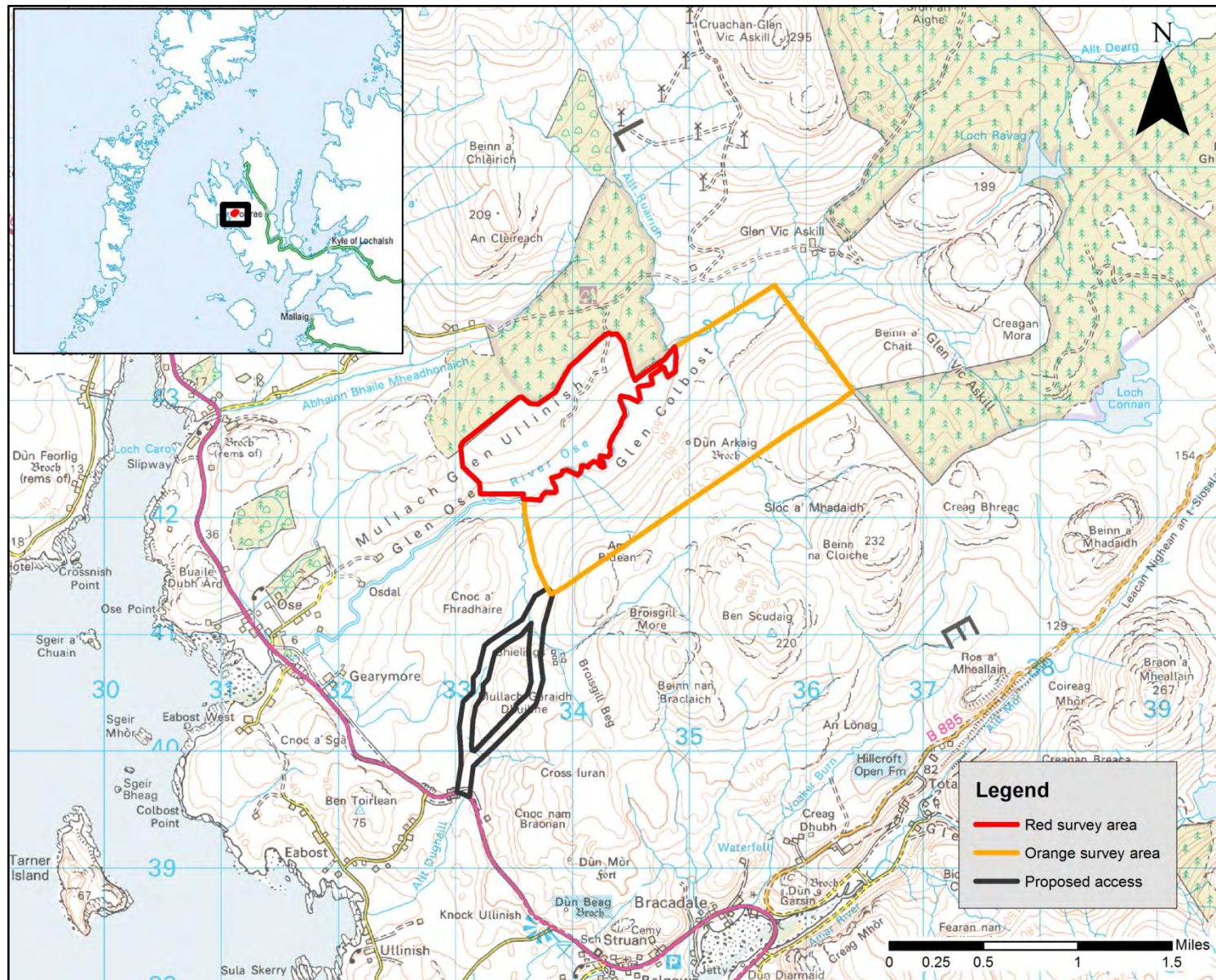


Figure 1: Location of initial survey areas

- 2.2 The general location of the survey areas comprises rough, undulating moorland on the valley sides of the River Ose; the southeast side being steeper than the northwest. There are also several small streams in the vicinity, which form wet boggy areas in places. The archaeological sites recorded during the survey are located on drier areas of ground. The underlying bedrock comprises Skye lava overlain with alluvial and till deposits².

3. Archaeological and Historical Background

- 3.1 The development areas are situated on the north-eastern side of the A863 in the valley named *Mullach Glen Ullinish* and *Glen Colbost*, within the parish of Bracadale, Northwest Skye. The predominant way of life in the parish as a whole was subsistence farming; most of the ground was used for grazing black cattle and a small number of sheep with very little in the way of arable production. The people were poor and the population was decreasing through the 18th and 19th centuries due to agricultural improvement and clearance of the land to make way for large-scale sheep farming³. This period of Bracadale's history is well represented within the development areas.
- 3.2 In addition to the Post Medieval remains within and surrounding the development areas, there is also evidence of Skye's earlier inhabitants. Dun Arkaig, an Iron Age broch, is situated on a prominent basalt outcrop on the southeast side of the Ose valley within the development areas. Beyond the survey areas there are several brochs and cairns attesting to significant prehistoric activity in the area.

4. Methodology

The overall aim of this assessment was to identify and record any archaeological sites or features that might be affected by the proposed wind farm development within the three survey areas in the Ose valley and to propose mitigation as appropriate to ensure that archaeological evidence is not unnecessarily damaged or destroyed.

4.1 Desk-based assessment

- 4.1.1 A desk-based assessment was conducted prior to commencement of the survey in order to assess the archaeological potential of the area based on previously recorded sites and any historical documentation. This was done in strict adherence to the *Institute for Archaeologists' (IfA) Standards and guidance for archaeological desk-based assessment*⁴.
- 4.1.2 The drawings of the area, as supplied by the client, were checked in detail against the Ordnance Survey 1:25000 Map, Highland Council's Historic Environment Record (HER), the National Monuments Record of Scotland (NMRS) and Historic Scotland's records of scheduled monuments and listed buildings. Online satellite imagery and aerial photographs were checked and the map collections of the National Library of Scotland (NLS) were studied. Other literary sources were also consulted.

² British Geological Survey 2012

³ NSA

⁴ IfA 2008

4.2 Walkover survey

- 4.2.1 The objectives were to identify and record all archaeological sites within the proposed development areas.
- 4.2.2 Archaeological sites were recorded individually including using high-resolution digital photography where possible, while sketch survey drawings were produced where necessary. The individual site locations were plotted using DGPS technology and ArcPad software on a handheld Windows Mobile-based computer. Details relating to the individual sites and monuments located during the survey can be found in the Gazetteer of Archaeological Sites in Appendix 1.
- 4.2.3 Survey and recording methods from the Royal Commission on the Ancient and Historical Monuments of Scotland (RCAHMS)⁵ were employed and all work was conducted in strict adherence to the *Institute for Archaeologists' (IfA) Code of Conduct*⁶.

5. Results

5.1 Desk-based assessment

5.1.1 Historical mapping

Historical maps, unless otherwise stated, were consulted using the National Library of Scotland's online collection⁷.

- 5.1.1.1 The earliest map to show the area is John Thomson's Atlas of Scotland (1832), which shows a settlement called *Glen Ullinish*.

5.1.1.2 First Edition Ordnance Survey Six-inch to the mile map (Inverness-shire (Isle of Skye), Sheet XXVIII, surveyed 1877)

The 1st edition Ordnance Survey (OS) 6 inch-to-the-mile map⁸ depicts a large sheepfold to the north of *Dun Arkaig*. In the south-western corner of the survey area there is a small settlement named *Glenosdale*, which comprises two roofed and three unroofed buildings together with a kale yard. Associated with the settlement are an enclosure and boundary dykes. A track can be seen running the length of the survey area from beyond the sheepfold to *Glenosdale* where it splits into two.

5.1.1.3 Second Edition Ordnance Survey Six-inch to the mile map (Inverness-shire ó Isle of Skye Sheet XXVIII, revised 1901)

The 2nd edition OS 6 inch -to-the-mile map⁹ again shows the sheepfold shown on the First Edition map. The track running from the sheepfold to *Glenosdale* is no longer extant and the land between these two sites has been reclaimed with an additional enclosure. *Glenosdale* is now denoted as *Glenostle* and is shown as a roofed building with a kale yard. There is a second roofed building towards the north-western end of the associated enclosure.

⁵ RCAHMS 2004

⁶ IfA 2009

⁷ NLS 2012

⁸ NLS 2012

⁹ NLS, 2012

On the northwest side of the River Ose the settlement of *Glen Ullinish* is depicted. This comprises five unroofed buildings and seven enclosures of varying sizes.

5.1.2 Highland Historic Environment Record (HHER)

The Highland Historic Environment Record was consulted online¹⁰ and the following sites or events were recorded in the survey area:

1. MHG 25197 Broch, Dun Arkaig NG 34990 42610

Dun Arkaig, a broch, occupies a commanding position halfway up the southeast slope of the Ose valley. It is situated midway along an oval basalt outcrop bounded by steep rock faces. It is in a dilapidated condition with the outer wall ranging in height from 1 ó 2 m on the east, south and west and to the foundation on the north. The entrance is in the northeast but is blocked by stones; stones also fill the interior. A ruined gallery is situated in the eastern wall. Other features include an outer casing wall on the west side and traces of walling to an outwork beyond the broch.

2. MHG 41789 Sheepfold, Dun Arkaig NG 35000 42730

An unroofed structure and one enclosure are depicted on the 1st edition of the OS 6-inch map. One enclosure is shown on the current OS mapping.

3. MHG 27655 Farmstead, Dun Arkaig NG 35000 42730

There are several ruined houses, each with outbuildings and traces of others close by together with yards and enclosures.

4. MHG 27657 Township, Glenostle NG 34150 42000

What may be a township, comprising three roofed and two unroofed buildings, is depicted on the 1st edition of the OS 6-inch map. Five unroofed buildings, two enclosures and a field-system are shown on the 1992 OS 1:10000 map.

5. MHG 54292 Stone and turf dyke, Osedale NG 33380 42239

A substantial stone and turf dyke likely to be associated with the former township of Osedale.

¹⁰ Highland HER 2012

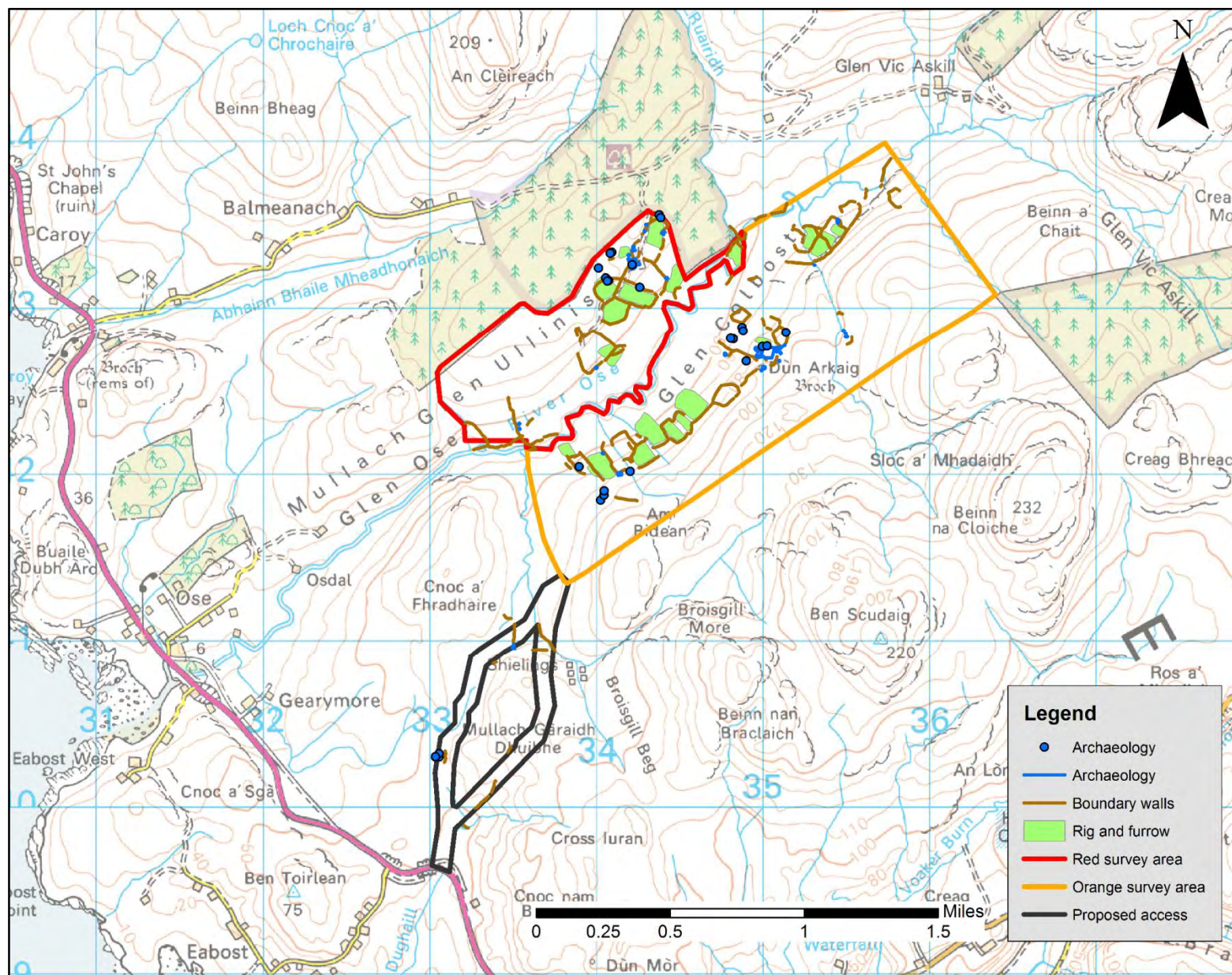


Figure 2: Location of the archaeological features recorded

5.2 Walkover Survey Results

The initial walkover survey revealed 187 archaeological sites (Figure 2) which relate to the prehistoric and Post Medieval occupation of the area. Seven additional sites were recorded during an additional survey of the revised access track conducted in June 2013. The Gazetteer of Archaeological Sites (Appendix 1) provides details of the 194 sites identified during both surveys.

The survey area was walked over and surveyed over two extended days, 4 and 5 May 2012, during generally good weather. Conditions on the ground were fairly good, although wet underfoot in parts. Extremely boggy ground in some areas made survey impossible and a thick cover of heather and rushes in other areas hampered the identification of archaeological features.

5.2.1 Red Area

There is a concentration of Post-Medieval structures in the northern corner of the **Red Area** (Figures 3 and 4). Associated with the various structures is a patchwork of rig and furrow field systems, the majority of which are surrounded by stone and turf boundary dykes (Figures 3 and 4). These attest to the past cultivation of what is the most fertile part of the **Red Area**. The ground on the upper slopes of the **Red Area** and towards its south-western reaches is much boggy and heather-covered. Here there is substantial evidence of peat cutting.

The most sizeable collection of structures is the settlement of Glen Ullinish (site 3; Figure 5; Plate 1). This settlement is depicted on the 2nd edition OS 6-inch map and can be assumed to have come into existence sometime between 1877, when the survey was conducted for the first edition OS 6-inch map, and 1901, when a second survey was carried out. Six stone structures were recorded here and it was evident that three were of a much earlier date than the others, being in a degraded condition. It is possible that these buildings had fallen out of use and become degraded prior to the 1877 OS survey and were therefore not recorded. Following their ruination, the three later structures have been used for stock purposes with twinning pens constructed in building corners.

To the north-northwest of this settlement are a small group of much degraded, scattered structures (sites 7 (Plate 1), 9 (Plate 3) and 10; Figure 5), which appear to pre-date the Glen Ullinish buildings. Again, the fact that they do not appear on the 1st edition OS 6-inch map, and their condition, would seem to suggest that they had gone out of use well before 1877.

In the northern corner of the **Red Area** is a large, ruinous house or barn built against a pre-existing wall, which has been used for sheep management in later times (site 1; Figure 3; Plate 4). This structure is not shown on the 1st or 2nd edition OS 6-inch maps, but is most likely to pre-date 1877. Two further degraded stone structures (site 8; Figure 3) of unknown use and date are located to the southwest of site 1.

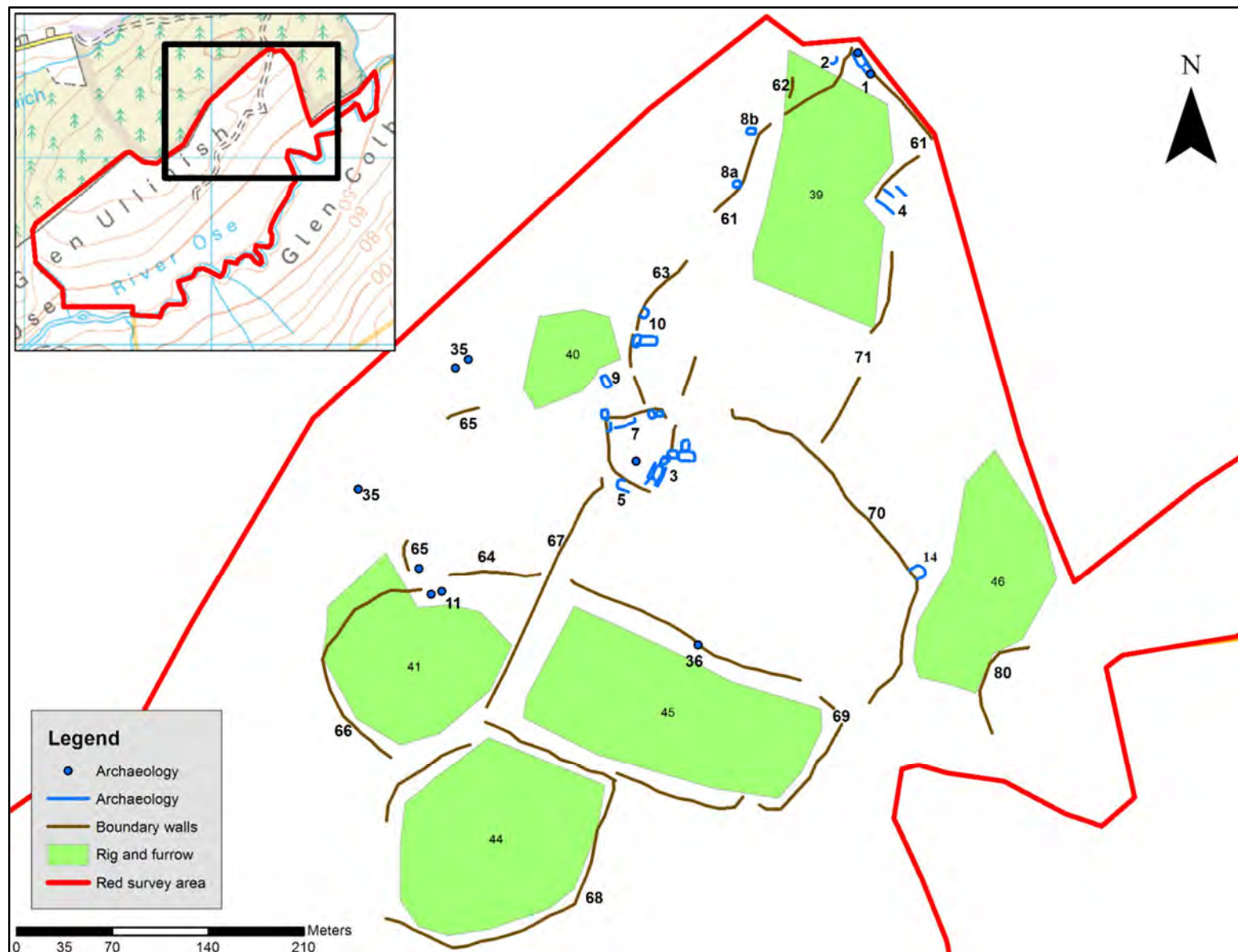


Figure 3: Location of the archaeological features in the northern half of the Red Area

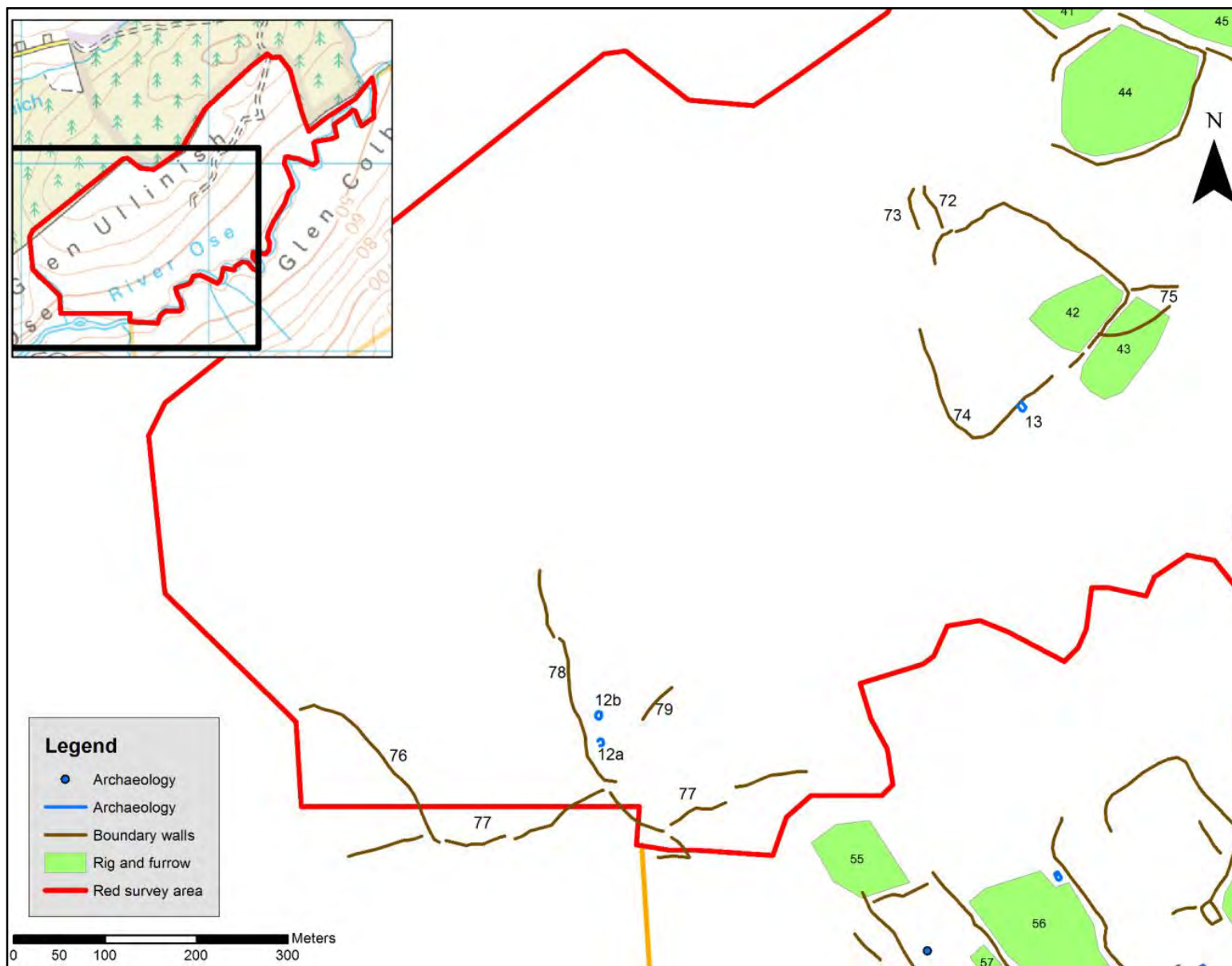


Figure 4: Location of the archaeological features in the southern half of the Red Area

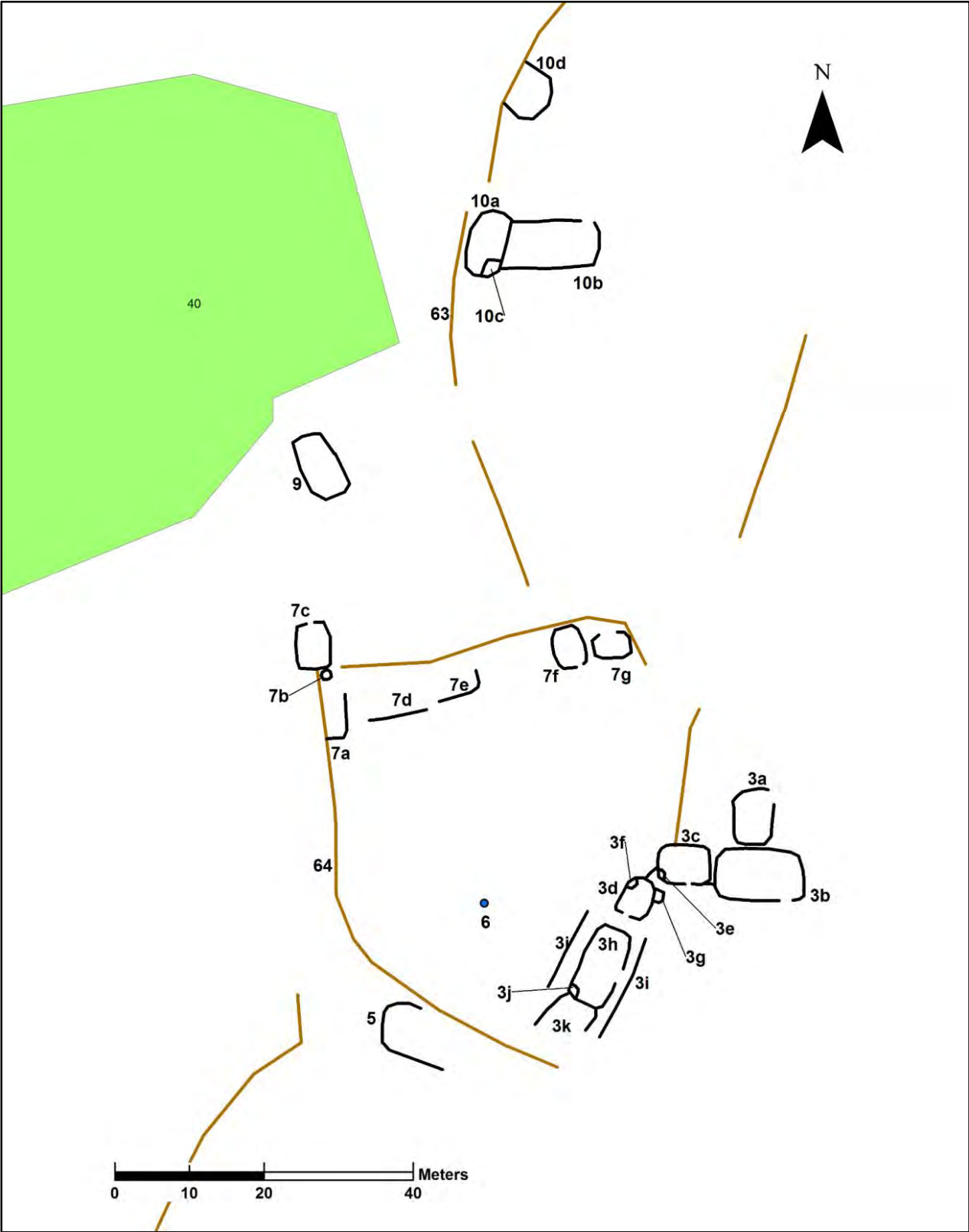


Figure 5: Detail of sites 3, 7, 9 and 10.



Plate 1: Site 7 in foreground; site 3 in background.



Plate 2: Site 3h with later twinning pen in the corner.



Plate 3: Site 9



Plate 4: Site 1 with later twinning pens in two corners

5.2.2 Orange Area

As in the **Red Area**, the most fertile land in the **Orange Area** is situated along the lower reaches of the River Ose valley side. It is here that the majority of the Post-Medieval structures recorded are situated, together with a series of areas of rig and furrow cultivation and associated boundary walls (Figures 6 and 7). On the upper reaches of the valley side significant evidence of peat cutting was again noted. Evidence was also found on the upper slopes for the practice of transhumance: a small group of much degraded shielings (site 29a-d) was recorded next to one of the many streams that flow into the River Ose.

Situated at the south-western end of the **Orange Area** is the small settlement of *Glenostle* (Figure 8). It appears on both the 1st and 2nd editions of the OS 6-inch map and was, therefore, in existence prior to 1877. Four houses and a byre were recorded, along with an associated kaleyard; the buildings have later twinning pens added (site 18a-i). To the northwest is a single degraded structure (site 33; Figure 8), which is not shown on the historical mapping.

A series of areas of rig and furrow cultivation and boundary walls run in a north-easterly direction from *Glenostle* to *Dun Arkaig*, where there is another concentration of Post-Medieval structures near *Dun Arkaig* broch (Figure 9). The broch (site 20; Plate 5), dating to the Iron Age, sits on top of a rocky knoll with commanding views over the valley. It is in a degraded condition with a blocked entrance visible in the north-east wall and an intra-mural gallery partially visible in the south-east quadrant. A later shieling, and twinning pens within it, has been built against a rock face on the southern slope of the knoll (site 19).

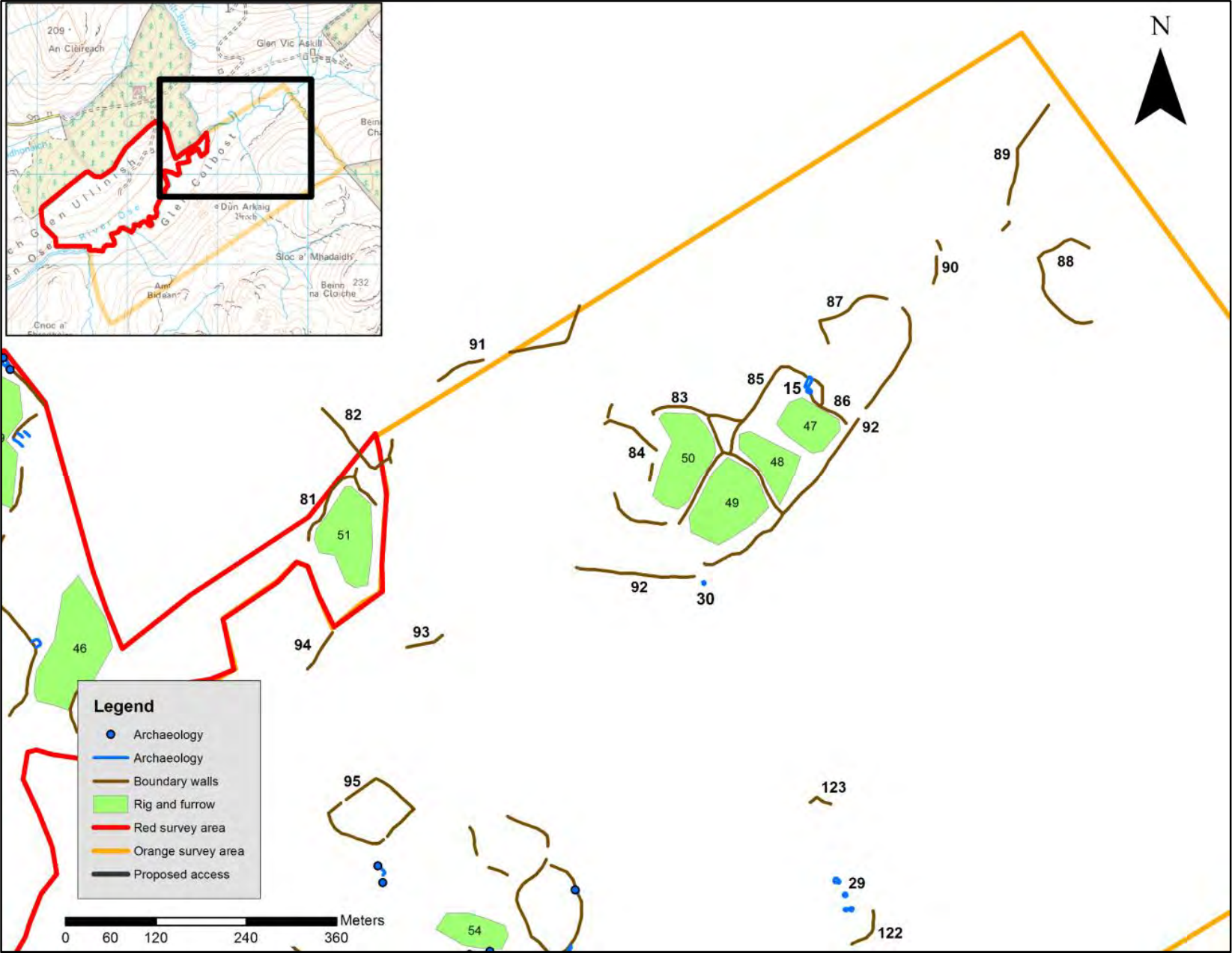


Figure 6: Location of the archaeological features in the north-eastern portion of the Orange Area

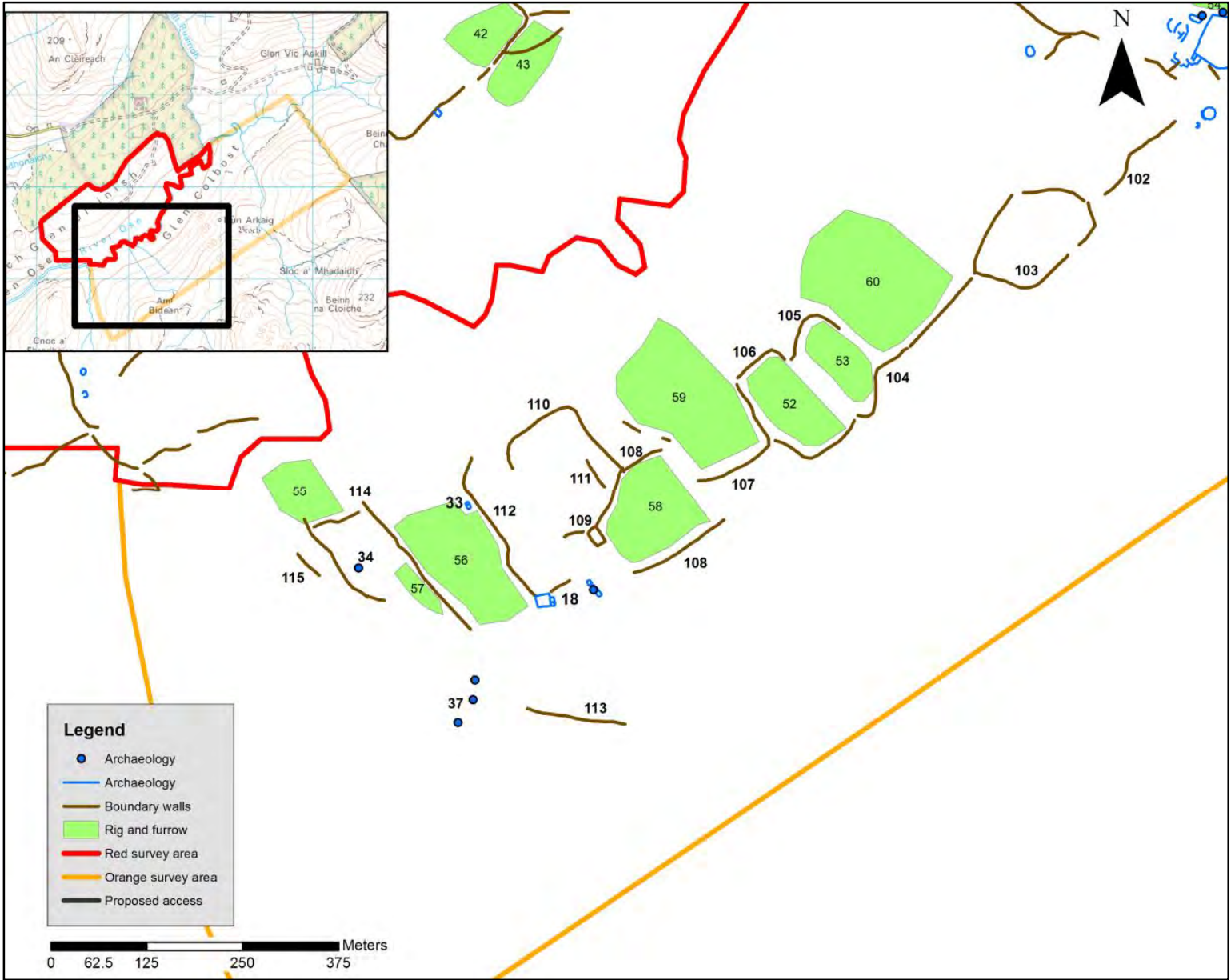


Figure 7: Location of the archaeological features in the south-western portion of the Orange Area

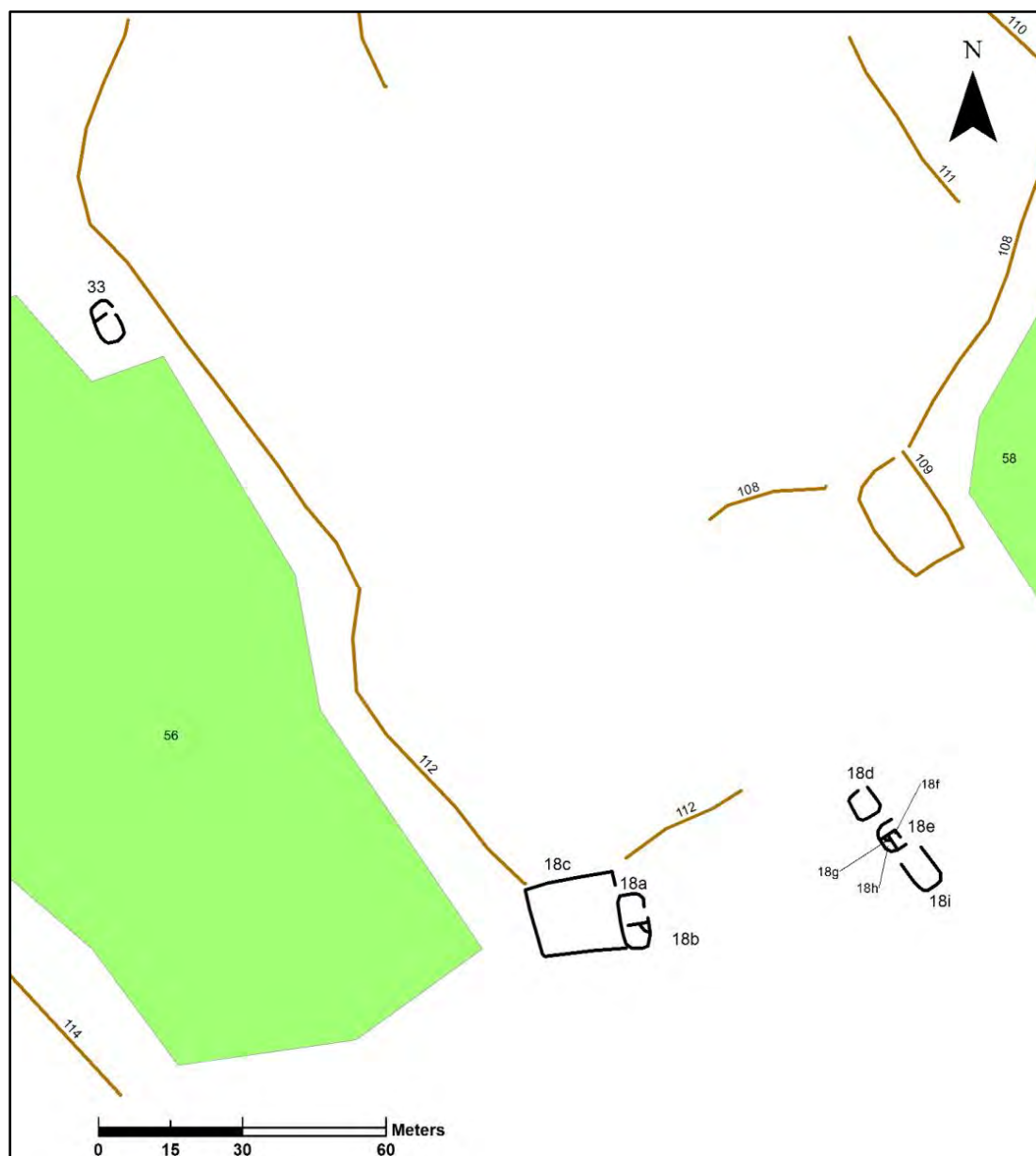


Figure 8: Detail of sites 18 and 33

Below the broch is a large sheepfold (site **23**; Plate **6**), most probably built from stone robbed from the broch. Surrounding the sheepfold are the much degraded remains of buildings (sites **21**, **22**, **24-27**); these are most likely associated with the rig and furrow and enclosures in the vicinity. Faint traces of rig and furrow were also detected within the sheepfold. To the north-west is another group of much degraded remains (site **31**), which may be an early farmstead. Certainly, small clearance cairns in this area would suggest some form of cultivation was taking place.

The final small settlement concentration within the **Orange Area** is situated in the north-eastern corner of the survey area (Figure **6**). A house and byre (site **15**; Figure **10**) were recorded together with boundary walls and areas of rig and furrow cultivation. These structures are not depicted on the OS 6-inch maps and it may be that they post-date 1901. Both structures have later twinning pens inserted in the corners.

To the south-east of the rig and furrow associated with site **15** is site **30** (Figure **6**), a small stone structure lying approximately 2m to the west of a stream. Due to its size and proximity to water it has been interpreted as a possible whisky still.

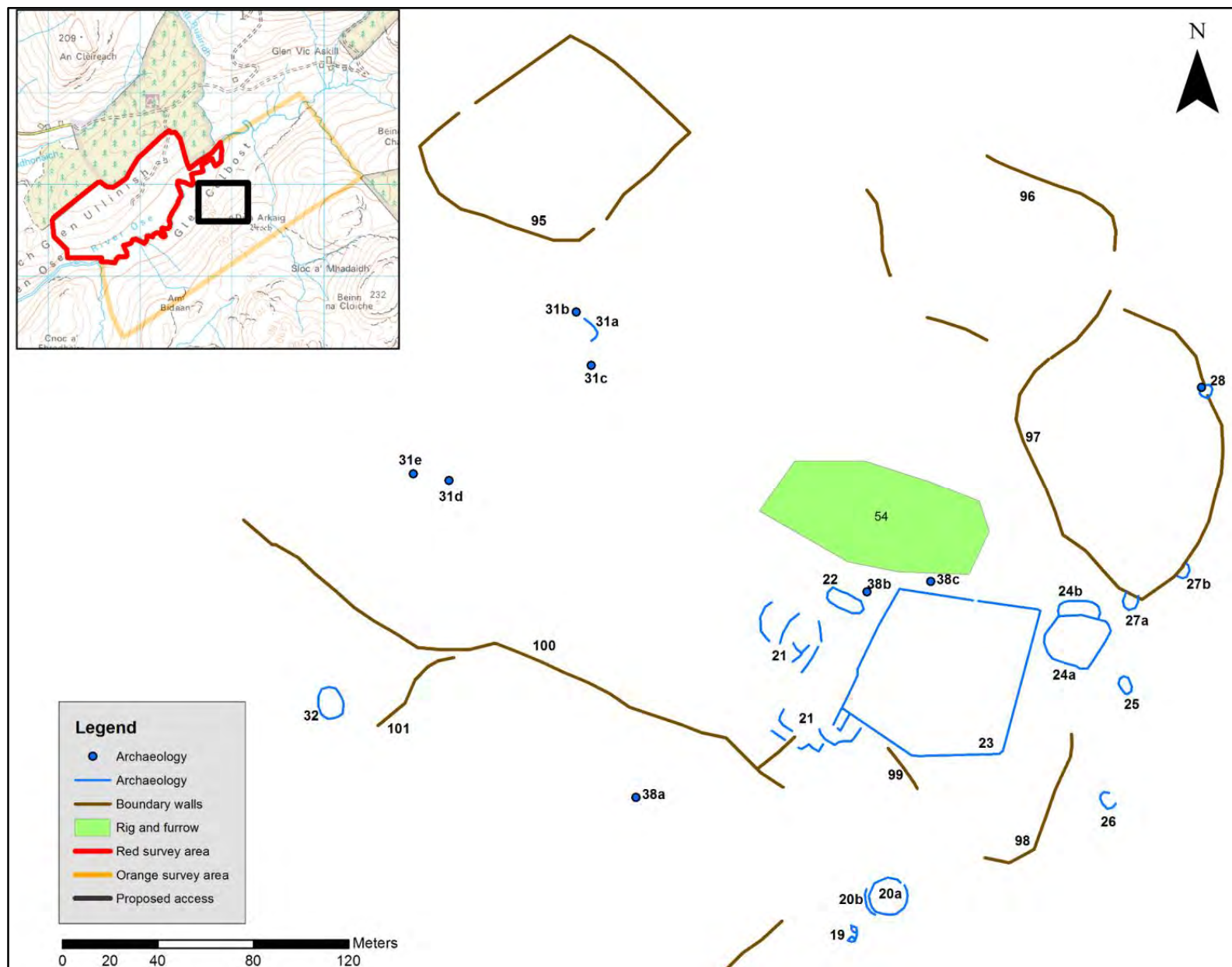


Figure 9: Detail of Dun Arkaig broch (Site 20) and the Post-Medieval structures in the vicinity thereof



Plate 5: Dun Arkaig Broch



Plate 6: Dun Arkaig sheepfold

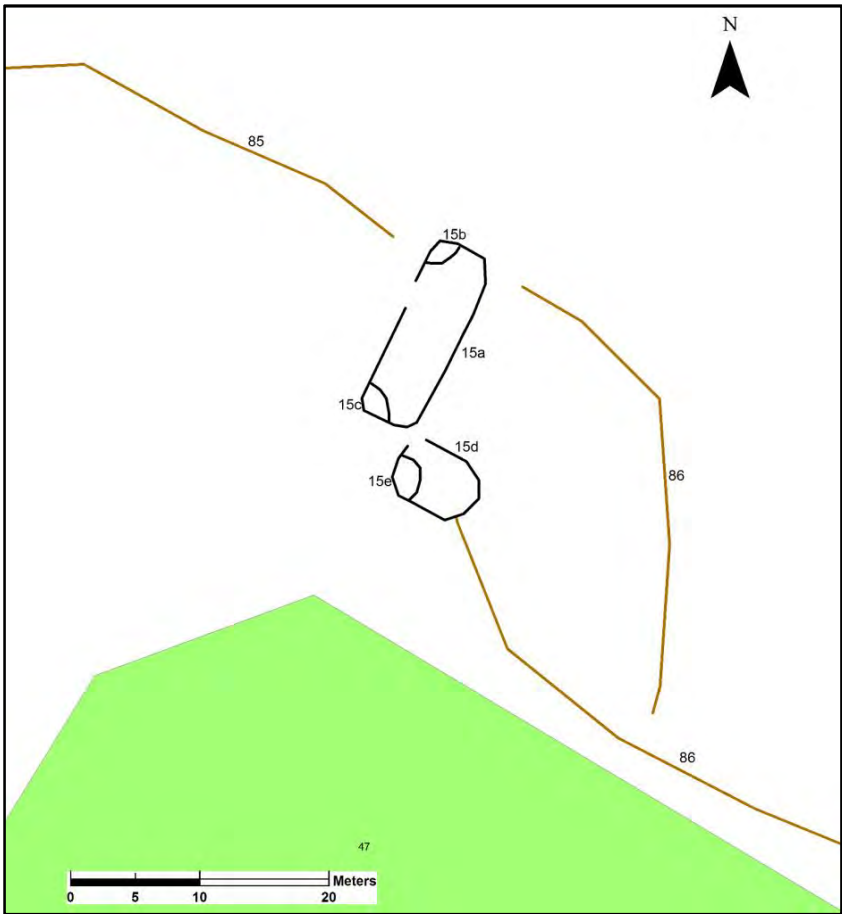


Figure 10: Detail of Site 15

5.2.3 Access Tracks – May 2012

Two proposed access routes were surveyed (Figure 11) and for ease of reference will be referred to as the North-west Track and South-east Track. No sites of interest in these areas were noted during the desk-based assessment, but archaeological features were noted on both routes.

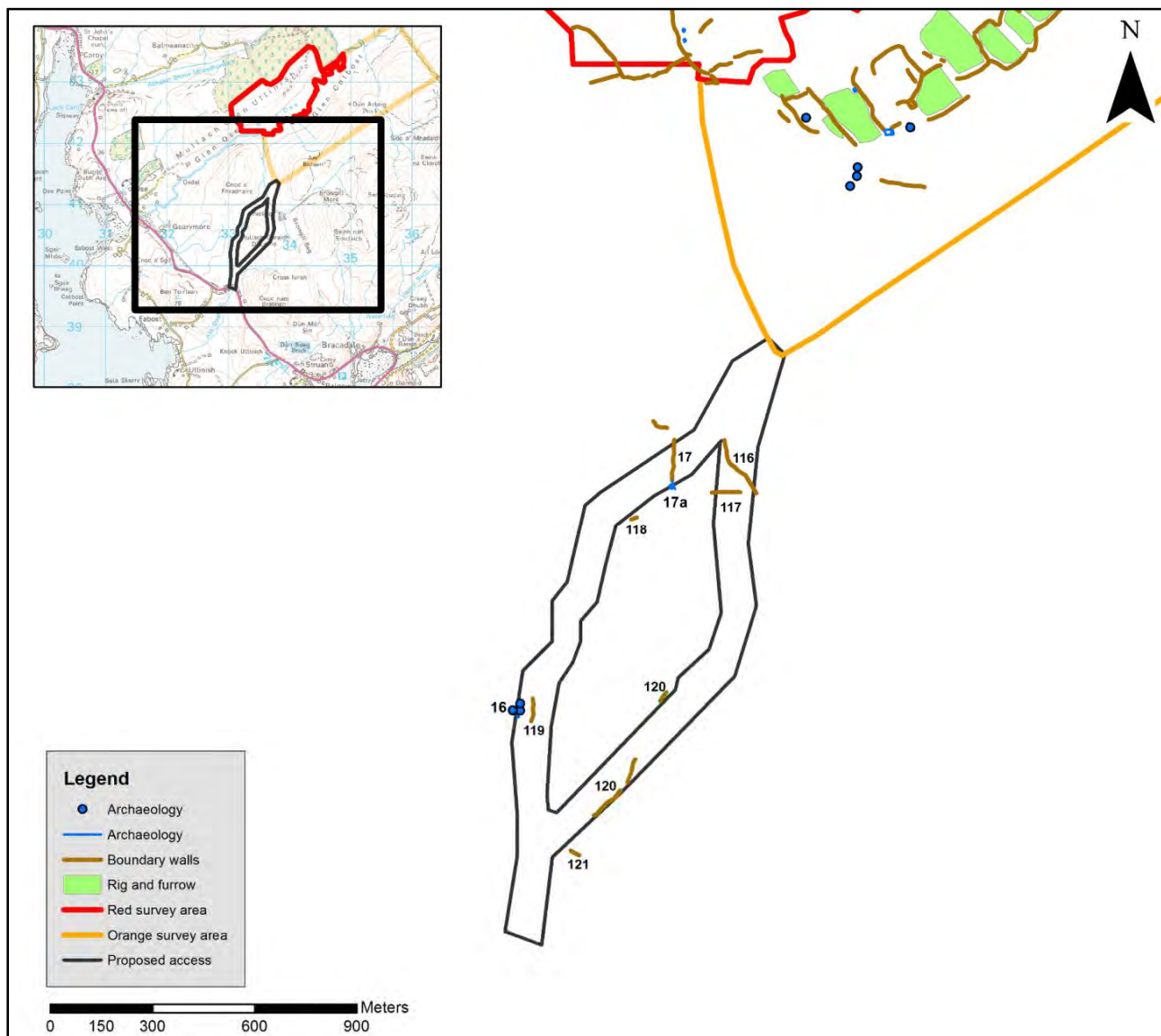


Figure 11: Archaeological sites recorded in May 2012 along the North-west and South-east access tracks

5.2.3.1 North-west Access Track

Two groups of archaeological features were recorded within the proposed North-west Access Track. Site 16 (Figure 12) is a cluster of five Post-Medieval shielings, some double celled, situated on small mounds within an, otherwise, boggy landscape. All were much degraded and covered in rushes. The ground cover in this area made identifying the sites difficult and it is possible there are further much degraded remains in the vicinity. The shielings had later twinning pens inserted. Part of a boundary wall was identified close by (site 119).

Site 17a is the much degraded remains of what appeared to be a stone structure of unknown date; there was a possible entrance visible on the east side. The stone from this structure was

likely robbed to build a portion of wall (site **17c**); the stone work only extends for a short distance before becoming a much degraded turf dyke. A later twinning pen (site **17b**) is attached to the wall.

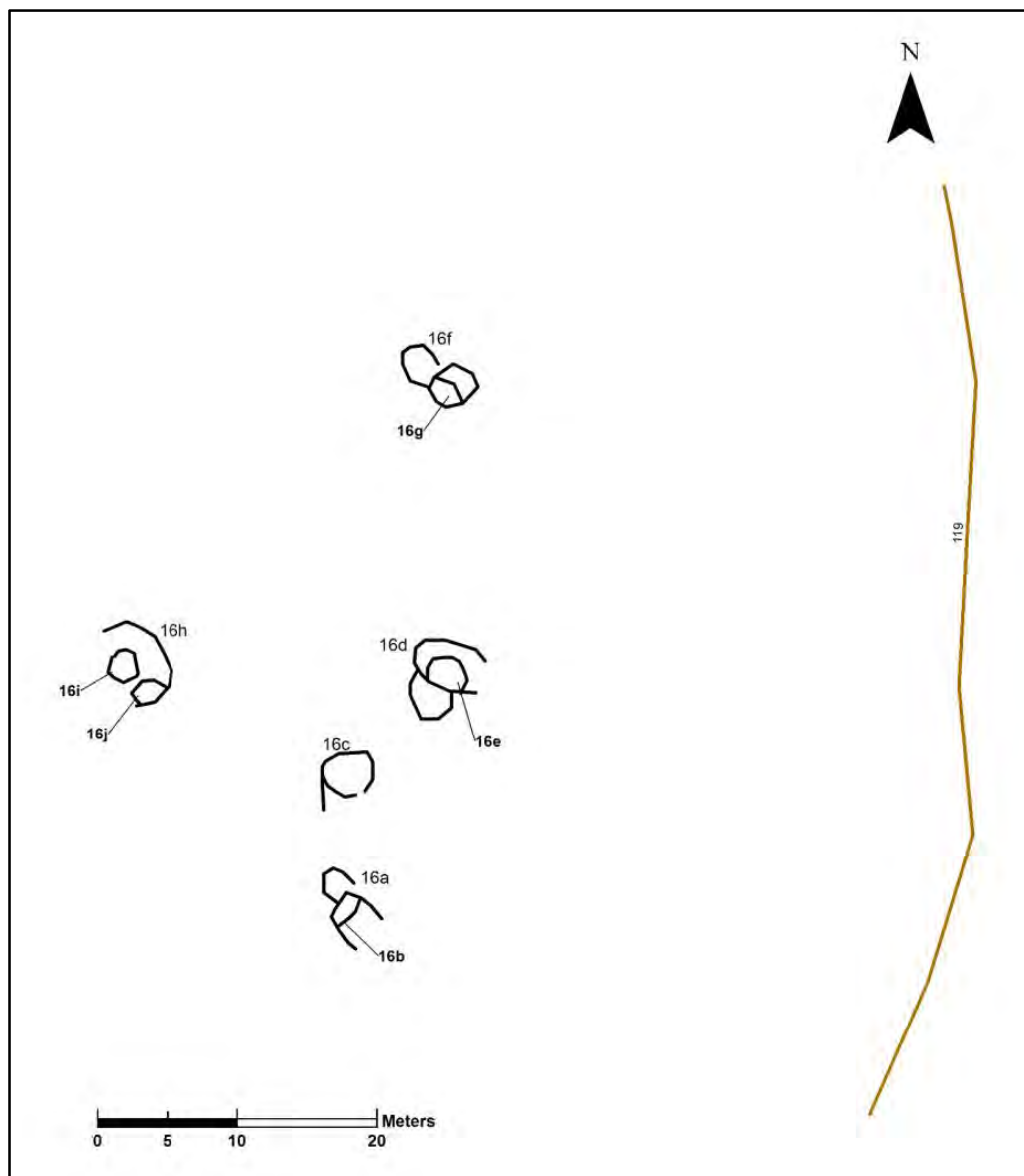


Figure 12: Detail of site 16

5.2.3.2 South-east Access Track

The archaeological features recorded within the proposed South-east Access Track were all boundary walls. At the northern end of the track sites **116**, a stone and turf dyke, and **117**, a turf dyke, were recorded. It is likely that they were joined at one time and, indeed, were probably linked to site **17** (stone wall).

Site **120** presented itself as sections of an alignment of upright boulders mostly consumed by peat, typical of a Bronze Age sub-peat dyke. It is possible that this dyke runs as a continuous feature below the peat.

Site **121** is a stone and turf dyke lying to the east of the proposed route.

5.2.4 Access Track – June 2013

The access track revision placed the site entrance to the west of the original location. The changes were surveyed on 14 June 2013 and seven sites were identified (Figure 15).

A boundary dyke, Site 124, two disused quarries, Site 125a and Site 125b, a possible structure, Site 126 and a small shieling, Site 127 were located near the site entrance close to the main road. Site 128, a boulder-built shieling was located to the west of the newly proposed access and an area of peat cutting, Site 129, is located within the landscape to be crossed (Figure 15).

Although the quarries (Site 125) and the area of peat cutting (Site 129) will be directly impacted by the access track construction, it is not recommended that the sites are preserved.



Plate 7: Shieling, Site 127, facing NW



Plate 8: Shieling or pen, Site 128, facing W

6. Discussion

- 6.1 The walkover survey recorded 194 archaeological sites within the survey areas. Overall, the landscape is dominated by Post-Medieval remains including structures and associated boundary dykes, enclosures and rig and furrow cultivation.
- 6.2 Skye's rich prehistory is represented by *Dun Arkaig Broch* and the Bronze Age sub-peat dyke. It was, perhaps, surprising not to find any further evidence of prehistoric activity in the vicinity of the broch, but it is quite possible that any traces were destroyed by the later Post-Medieval building and cultivation activities in that area.
- 6.3 The number and condition of the various structures within the survey areas suggest that this part of the Ose valley had been occupied over a lengthy period. Livestock was grazed and moved up to higher pastures as evidenced by the presence of shielings; ground was reclaimed and cultivated along the banks of the river and on the lower slopes of the valley sides; peat was cut for fuel and even, perhaps, whisky was distilled.

7. Recommendations

Following the initial submission of this report, a revision was made in January 2013 and again in June 2013 to consider the proposed wind farm layout and revised changes to the access track, as shown in Figures 13, 14 and 15 below. These recommendations are based on the proposed and revised layout.

- 7.1 At least a 20m buffer zone should be maintained around *Dun Arkaig Broch* (Figure 13), at least a 10m buffer zone should be maintained around all built structures and a 5m buffer zone should

be maintained around all boundary and enclosure dykes. As per the June 2013 layout revision provided by Green Cat Consulting, Site 17 and Site 29b will no longer be directly impacted by the development. However, the tracks do run in close proximity to these sites and it is recommended that an archaeological watching brief be considered in the following areas: for a distance of 50m to either side of Site 17 (Figure 13), for a distance of 50m to either side of the Site 29 and during construction of the wind turbine and access track to the north of Sites 24-28 (Figure 14).

- 7.2 Prior to development works commencing, the development site should be walked with a site agent and archaeologist in order to highlight the location of archaeological sites. During this time, any sites in the vicinity of ground-breaking work, particularly Site 17, Site 18, Sites 24-28 and Sites 29a, 29c and 29d, Site 126 and Site 127 (Figures 13, 14 and 15), should be marked off using wooden posts and highly visible mesh barrier fencing.
- 7.3 The final decision with respect to these recommendations lies with the Highland Council Historic Environment Team.

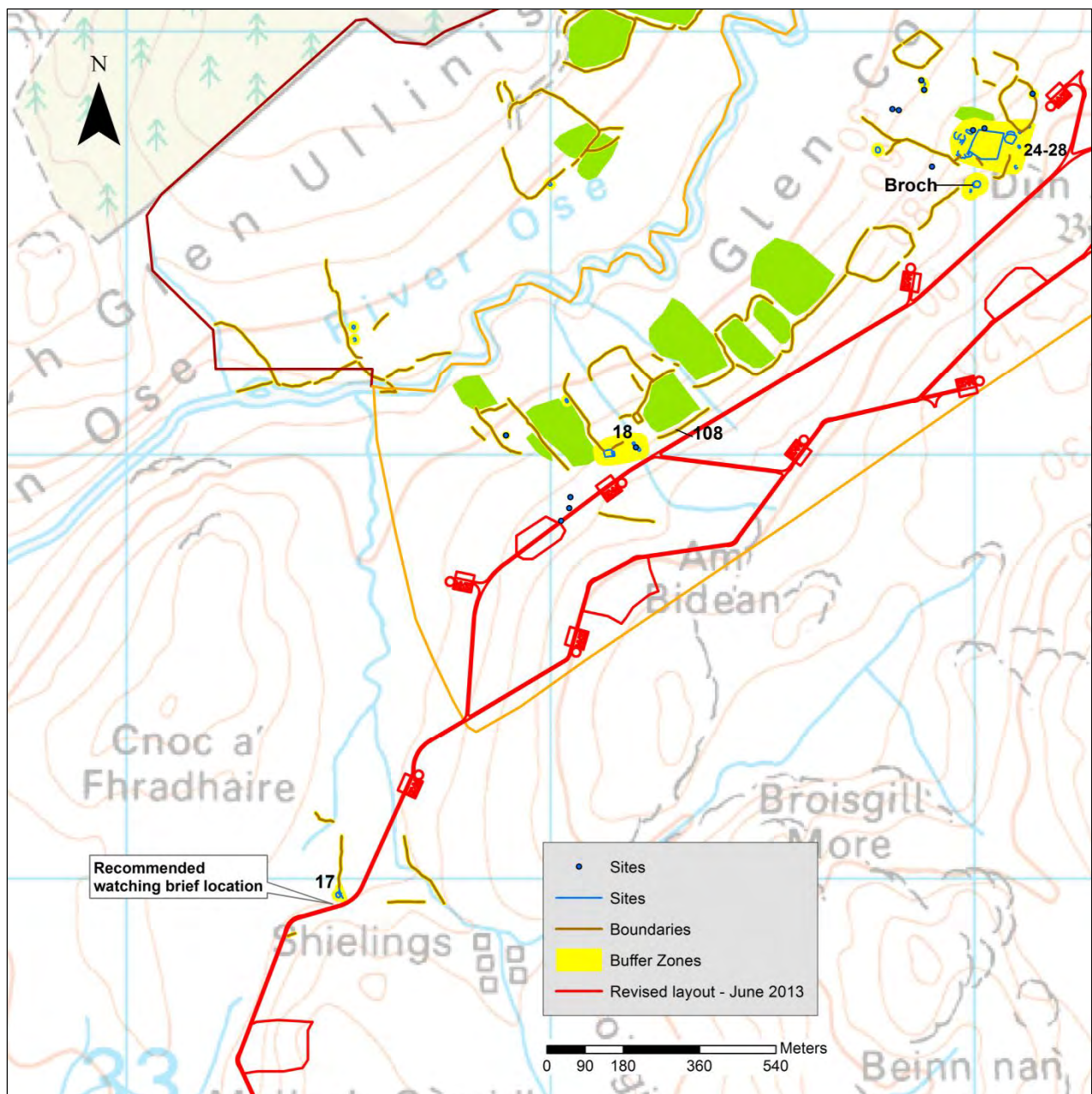


Figure 13: Proposed wind farm layout and access track layout showing recommendations and buffer zones around Site 17

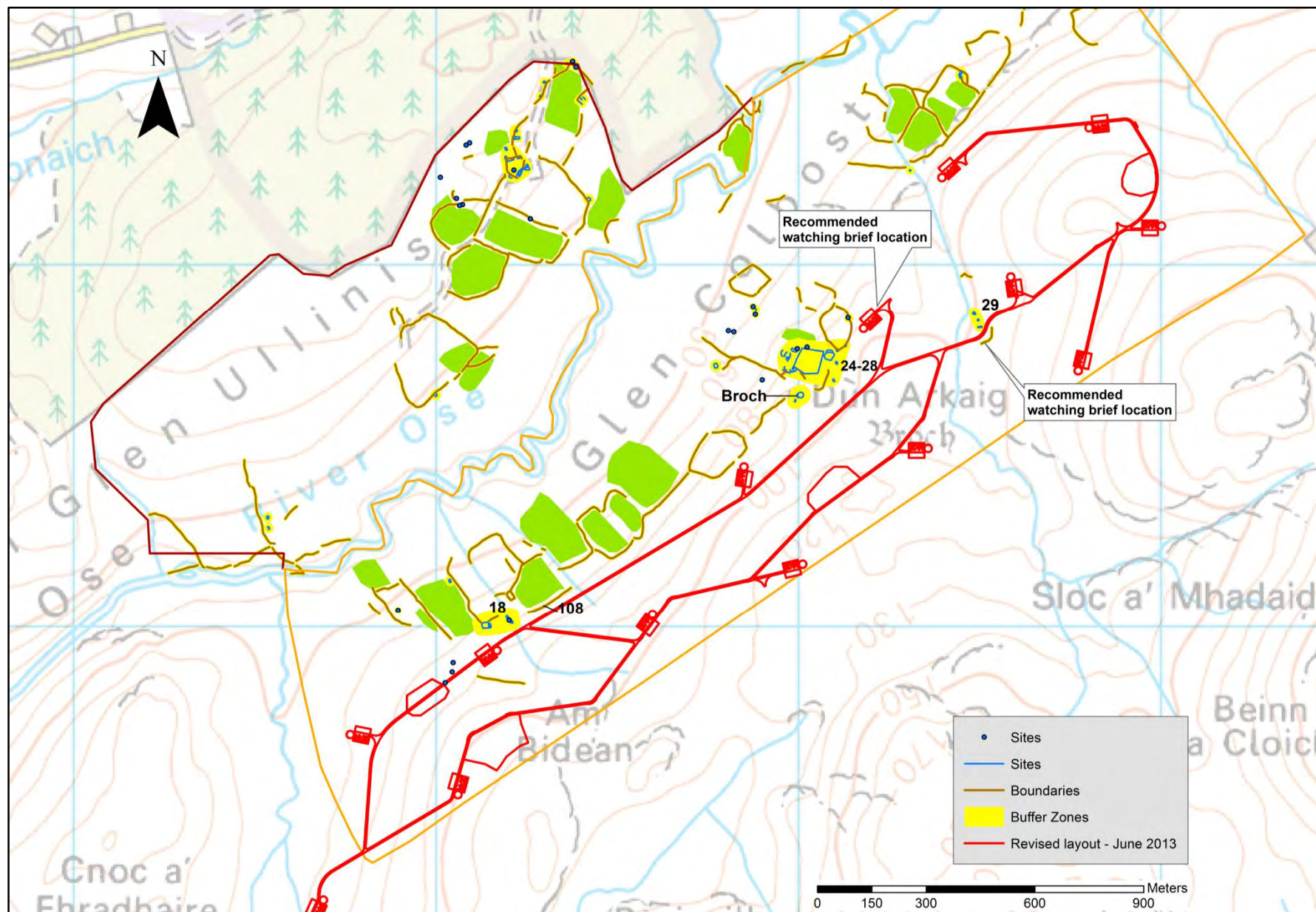


Figure 14: Proposed wind farm layout showing recommendations and buffer zones

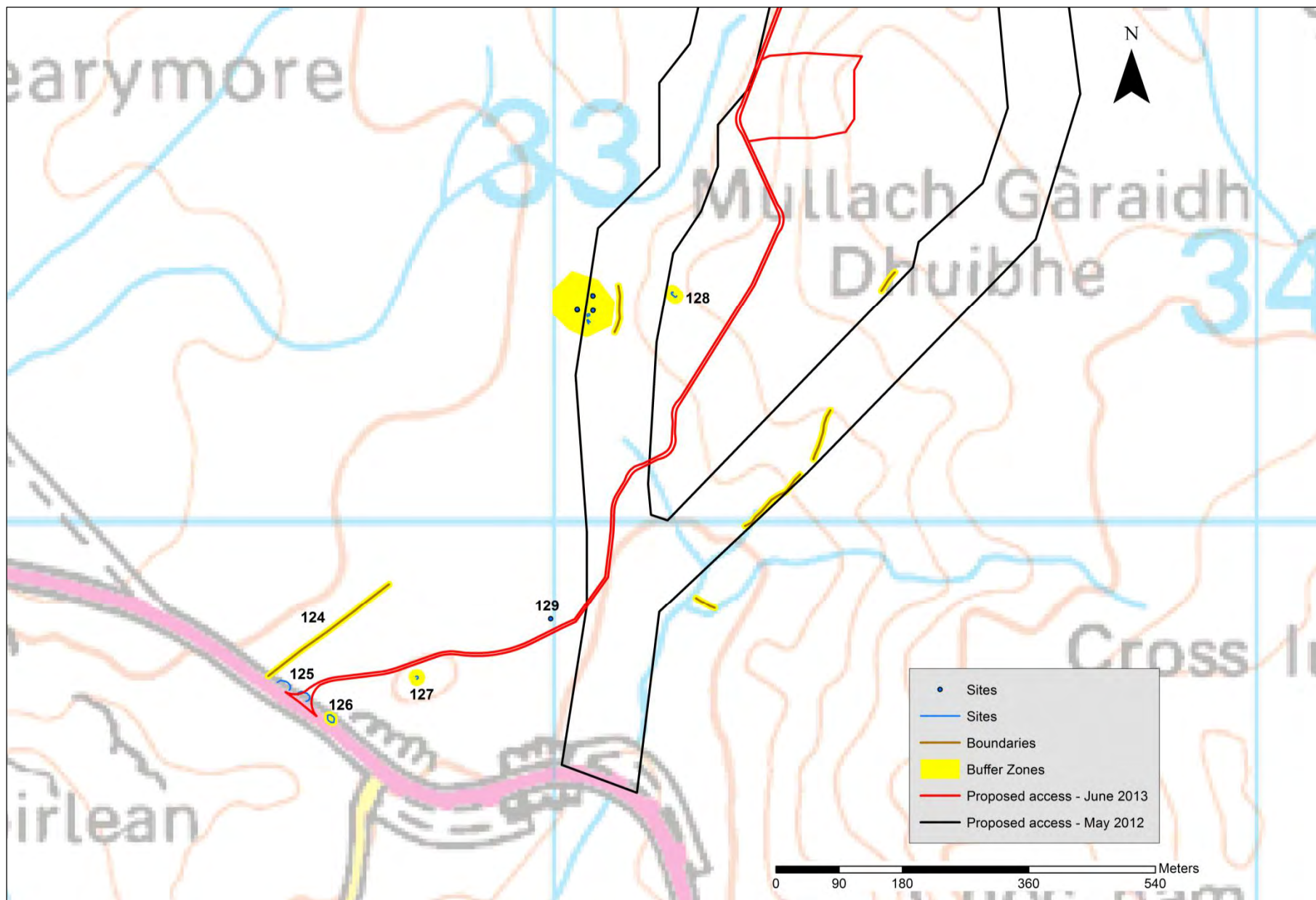


Figure 15: Revised access road showing archaeological sites and buffer zones

8. References

British Geological Survey 2010 Accessed 14 May 2012 at [Http://bgs.ac.uk](http://bgs.ac.uk)

Highland Council Historic Environment Team (HET) 2011. *Development Guidance: Archaeology*, v 1.3. Accessed at:
[Http://her.highland.gov.uk/hbsmrgatewayhighland/DataFiles/NewReports/DevelopmentGuidance_v1.3.pdf](http://her.highland.gov.uk/hbsmrgatewayhighland/DataFiles/NewReports/DevelopmentGuidance_v1.3.pdf)

Highland Historic Environment Record (HER) 2012. Accessed 3 May 2012 at
<http://her.highland.gov.uk>

Institute for Archaeologists, 2008. *Standards and guidance for archaeological desk-based assessment*. Reading: IfA.

Institute for Archaeologists, 2009. *By-laws of the Institute for Archaeologists: Code of Conduct*. Reading, IfA.

NLS 2012. National Library of Scotland. Accessed 14 May 2012 at <http://maps.nls.uk/>

NSA. New Statistical Account, Account of 1834-45 vol.14 pp.296-297: Bracadale, County of Inverness accessed 14 May 2012 at <http://stat-acc-scot.edina.ac.uk/link/1834-45/Inverness/Bracadale/>

Royal Commission on the Ancient and Historical Monuments of Scotland, 2004. *Corporate Plan 2004-9: Annex - Survey and Recording Policy* accessed 19 March 2012 at
http://www.rcahms.gov.uk/rcahms_media/files/foi/survey_and_recording_policy.pdf

The Scottish Government 2010. *Scottish Planning Policy* accessed 19 March 2012 at
<Http://www.scotland.gov.uk/Resource/Doc/300760/0093908.pdf>

CARTOGRAPHIC REFERENCES accessed at <http://www.nls.uk/maps/>

Ordnance Survey 1881 *1st Edition 6-inch to the mile: Inverness-shire (Isle of Skye), Sheet XXVIII, surveyed 1877.*

Ordnance Survey 1903 *2nd Edition 6-inch to the mile: Inverness-shire Isle of Skye, Sheet XXVIII, revised 1901.*

Thomson, John 1832 *Atlas of Scotland: Skye Island &c.*

APPENDIX 1 Glen Ullinish Gazetteer of Archaeological Sites

No.	Site Name	Site Type	Description	Align- ment	Condition	Period	Height OD (m)	Buffer Zone (m)	Easting (centre)	Northing (centre)	Photo No.	HHER No.
1a	Glen Ullinish	House / byre	Abutting an earlier turf/stone wall is a moss-covered subrectangular house measuring 12m by 5m and an attached byre measuring 6m by 4.5m. Turf/stone walls spread to 1.5-2m wide, standing up to 0.75m high; a filled-in entrance is in the S end of W wall.	NW-SE	Degraded	Post Medieval	80	10	134379	843560	1-4	-
1b	Glen Ullinish	Twinning pen	A later stone-built twinning pen measuring 1m across internally is located in the N corner of house Site 1a.	N/A	Degraded	Post Medieval	80	5	134381	843559	2	-
1c	Glen Ullinish	Twinning pen	A later stone-built twinning pen measuring 0.7m by 0.5m internally is located in the S corner of house Site 1a.	N/A	Degraded	Post Medieval	80	5	134390	843544	2-4	-
2	Glen Ullinish	Quarry	A disused turf-covered possible quarry has been dug into a hillside on an E-facing slope. There is a 0.8m wide and 0.5m high bank enclosing the front of the quarry which may have been used as a later enclosure.	-	Degraded	Post Medieval	80	5	134365	843553	5	-
3a	Glen Ullinish	House/ bothy	A moss-covered subrectangular drystone house measuring 6m N-S by 5m with walls spread to 1-1.5m wide, standing up to 0.5m high; there is a possible entrance is in the NE corner and rushes fill the interior and surround the exterior.	N-S	Degraded	Post Medieval	65	10	134252	843270	7	-

No.	Site Name	Site Type	Description	Align- ment	Condition	Period	Height OD (m)	Buffer Zone (m)	Easting (centre)	Northing (centre)	Photo No.	HHER No.
3b	Glen Ullinish	House	A moss-covered subrectangular drystone house measuring 11m E-W by 5m internally with walls spread to 1.2-2m wide, standing up to 0.75m high; there is no visible wall on W side and a possible entrance in the SE end of the S wall.	E-W	Degraded- very degraded	Post Medieval	65	10	134252	843268	-	-
3c	Glen Ullinish	House or byre	A subrectangular drystone house or byre measuring 7m E-W by 5m internally with walls 0.8m wide, standing up to 1.1m high; there is an entrance in S wall 0.8m wide and a twinning pen in the SW corner.	E-W	Degraded	Post Medieval	65	10	134245	843269	11	-
3d	Glen Ullinish	House	A subrectangular drystone house with square internal corners measures 5.5m NE-SW by 4m internally with walls 0.75m wide and stands 0.25-1.25m high; there is an entrance in S wall 0.8m wide and a twinning pen in the NW corner.	NE-SW	Degraded	Post Medieval	65	10	134241	843264	9-11	-
3e	Glen Ullinish	Twinning pen	A later stone-built twinning pen is located in the SW corner of Site 3c. It measures 1m N-S by 0.7m and stands up to 0.5m high.	N-S	Ruinous	Post Medieval	65	5	134243	843265	-	-
3f	Glen Ullinish	Twinning pen	A later stone-built twinning pen is located in the NW corner of Site 3d. It measures 1m across and stands up to 0.5m high.	-	Degraded	Post Medieval	65	5	134239	843263	-	-
3g	Glen Ullinish	Twinning pen	A later stone-built structure measuring 2m across is attached to the E side of Site 3d. It is probably a later twinning pen.	-	Degraded	Post Medieval	65	5	134243	843262	-	-

No.	Site Name	Site Type	Description	Align- ment	Condition	Period	Height OD (m)	Buffer Zone (m)	Easting (centre)	Northing (centre)	Photo No.	HHER No.
3h	Glen Ullinish	House	A subrectangular drystone house with square internal corners measures 11m NNE-SSW by 5m over walls 0.75m wide and stands up to 1.75m high; 0.8m wide entrance in the E wall; there is a fireplace in SW wall and a twinning pen in the SW corner.	NNE-SSW	Degraded	Post Medieval	65	10	134232	843253	8-11	-
3i	Glen Ullinish	Earlier structure	The remains of a turf- and moss-covered footing of an earlier structure underlies and extends beyond house Site 3h. It was too degraded to identify the type.	NNE-SSW	Very degraded	Post Medieval	65	10	134230	843255	-	-
3j	Glen Ullinish	Twinning pen	A later stone-built twinning pen is located in the SW corner of Site 3h. It measures 0.9m across and stands up to 0.5m high.	-	Degraded	Post Medieval	65	5	134231	843249	8	-
3k	Glen Ullinish	Structure	A very degraded stone/turf structure measures approximately 7m NE-SW by 4.5m with walls approximately 0.75m wide and standing up to 0.2m high. It partially underlies Site 3h and may be contemporary with Site 3i.	NE-SW	Very degraded	Post Medieval	65	10	134227	843247	-	-
4	Glen Ullinish	Remains of structure	Three alignments of a single course of stonework were located in open pasture under grass and may be the remains of one or more structures that have been almost completely robbed out.	NW-SE	Very degraded	Unknown	70	10	134412	843459	6	-
5	Glen Ullinish	Quarry	A disused quarry which was probably dug for later road construction. A bank of material to the N side overlies the earlier boundary wall located on the S side of settlement Site 3.	NW-SE	Ruinous	Post Medieval	65	5	134205	843242	10	-

No.	Site Name	Site Type	Description	Align- ment	Condition	Period	Height OD (m)	Buffer Zone (m)	Easting (centre)	Northing (centre)	Photo No.	HHER No.
6	Glen Ullinish	Stone setting	A circular setting of stones measuring 0.6m across may be a hearth.	-	Degraded	Post Medieval	65	5	134219	843261	12	-
7a	Glen Ullinish	Structure	A very degraded moss-covered stone/turf structure with rounded corners measures 9m N-S by 5m with walls spread to 2m and up to 0.3m high. There is no visible entrance. A later stone wall overlies the W wall of it.	N-S	Very degraded	Post Medieval	70	10	134200	843285	-	-
7b	Glen Ullinish	Twinning pen	A later stone-built twinning pen is located in the NW corner of a stone-built enclosure encompassing Site 7 and Site 3. It measures 0.7m across and stands up to 0.6m high.	-	Degraded	Post Medieval	70	5	134197	843292	13-14	-
7c	Glen Ullinish	House or byre	A grass-covered stone/turf house or byre measures 7m N-S by 4m over walls spread to 1.5m and up to 0.5m high. There is a possible entrance in the N wall and a later stone wall overlies its S wall.	N-S	Very degraded	Post Medieval	70	10	134198	843295	13-14	-
7d	Glen Ullinish	Structure	The remains of a grass-covered stone/turf structure were difficult to discern. It measures approximately 8m E-W by 5m over walls spread to 0.7m and up to 0.2m high. There is no visible entrance and it is overlain by a later stone wall on its N side.	E-W	Very degraded	Post Medieval	70	10	134207	843286	-	-
7e	Glen Ullinish	Structure	The remains of a grass-covered stone/turf structure measure approximately 5m E-W by 4m over walls spread to 1.5m and up to 0.6m high. There is no visible entrance and it is overlain by a later stone wall on its N side.	E-W	Very degraded	Post Medieval	70	10	134216	843289	-	-

No.	Site Name	Site Type	Description	Align- ment	Condition	Period	Height OD (m)	Buffer Zone (m)	Easting (centre)	Northing (centre)	Photo No.	HHER No.
7f	Glen Ullinish	House/ byre	A grass-covered stone/turf house or byre measures 8m N-S by 5m over walls spread to 2m and up to 0.8m high. There is a possible entrance in the E wall. The stone-built enclosure wall to N postdates the structures.	N-S	Very degraded	Post Medieval	70	10	134229	843297	15	-
7g	Glen Ullinish	Byre	A grass-covered stone/turf possible byre measures 6m E-W by 5m over walls spread to 1m and up to 0.5m high. It is attached to house Site 7f. The stone-built enclosure wall to N and E postdates the structures.	E-W	Very degraded	Post Medieval	70	10	134236	843294	-	-
8a	Glen Ullinish	Shieling	A moss- and grass-covered stone-built shieling or bothy is located at the base of a rock outcrop. It measures 6m E-W by 4m over walls 0.5m wide and stands up to 0.7m high. There is an entrance in the N wall 0.5m wide.	E-W	Degraded	Post Medieval	80	10	134301	843500	17	-
8b	Glen Ullinish	Shieling	A moss- and grass-covered stone-built shieling or bothy is located at the base of a rock outcrop and built into boulders. It measures 4m E-W by 3.5m over walls 0.5m wide and stands up to 0.7m high. There was no visible entrance.	E-W	Degraded	Post Medieval	80	10	134290	843462	18	-
9	Glen Ullinish	House or byre	A grass-covered stone/turf house or byre measures 7m NW-SE by 6m over walls spread to 2m and up to 0.7m high. The structure, built on top of an outcrop, has rounded corners and no visible entrance.	NW-SE	Degraded	Post Medieval	75	10	134195	843317	19	-

No.	Site Name	Site Type	Description	Align- ment	Condition	Period	Height OD (m)	Buffer Zone (m)	Easting (centre)	Northing (centre)	Photo No.	HHER No.
10a	Glen Ullinish	Byre	A grass-covered stone/turf probable byre measures 10m NNE-SSW by 4m over walls spread to 1m and up to 0.8m high. The structure has rounded corners and a possible entrance in the NW corner 0.5m wide. There is a later twinning pen in the SE corner.	NNE-SSW	Degraded	Post Medieval	80	10	134216	843349	20	-
10b	Glen Ullinish	House	A grass-covered stone/turf subrectangular house measures 13m E-W by 6m over walls spread to 1.5m and up to 0.75m high. There is an entrance in the NE corner 0.5m wide and other possible filled-in entrance in S wall. It abuts Site 10a.	E-W	Degraded	Post Medieval	80	10	134227	843352	20	-
10c	Glen Ullinish	Twinning pen	A later stone-built twinning pen is located in the SE corner of Site 10a. It measures 0.7m across and stands up to 0.5m high.	-	Ruinous	Post Medieval	80	5	134219	843347	-	-
10d	Glen Ullinish	Byre or pen	A grass-covered subrectangular stone/turf pen or byre under dense rushes is attached to a stone/turf boundary wall. It measures 6m NE-SW by 4m over walls spread to 1m and up to 0.3m high. There is no visible entrance.	NE-SW	Degraded	Post Medieval	80	10	134227	843368	-	-
11a	Glen Ullinish	Clearance cairn	Amorphous cairn of stone measuring 4m across is located on top of an outcrop.	-	Degraded	Post Medieval	85	5	134060	843183	-	-
11b	Glen Ullinish	Clearance cairn	Amorphous cairn of stone measuring 4m long and 0.4m high is located to the S side of an outcrop.	-	Degraded	Post Medieval	85	5	134077	843166	-	-
11c	Glen Ullinish	Clearance cairn	Amorphous cairn of stone measuring 4m long and 0.4m high is located to the S side of an outcrop.	-	Degraded	Post Medieval	85	5	134069	843163	-	-

GUL12 6 Glen Ullinish, Skye: Archaeological Walkover Survey, revised June 2013

No.	Site Name	Site Type	Description	Align- ment	Condition	Period	Height OD (m)	Buffer Zone (m)	Easting (centre)	Northing (centre)	Photo No.	HHER No.
12a	Glenostle	Shieling	Built into the E side of a rock outcrop is a stone/turf shieling or boulder shelter measuring 3m N-S by 2.5m over walls spread to 1.5m and up to 0.4m high. There is an entrance on the E side.	N-S	Degraded	Post Medieval	45	10	133544	842275	-	-
12b	Glenostle	Possible shieling	A circular grass-covered mound measuring 4m across may be a very degraded shieling site.	-	Very degraded	Post Medieval	50	10	133542	842302	-	-
13	Glen Ullinish	Pen	A grass-covered stone/turf subrectangular pen is attached to a stone/turf boundary wall. It measures 8m NW-SE by 5m over walls spread to 1m and up to 0.3m high.	NW-SE	Degraded	Post Medieval	50	5	134005	842637	24	-
14	Glen Ullinish	Pen	A grass-covered stone/turf D-shaped mound is attached to a stone/turf boundary wall above a ditch or stream. It measures 8m across over walls spread to 1m and up to 0.6m high and probably formed a pen.	NW-SE	Very degraded	Post Medieval	50	5	134429	843183	-	-
15a	Glen Colbost	House	A grass-covered drystone subrectangular house with rounded corners measures 12m NE-SW by 5m over walls 0.8m wide and up to 1m high. There is an entrance in the NW wall 1m wide and two later twinning pens within the interior.	NE-SW	Degraded	Post Medieval	65	10	135452	843523	26-27	-
15b	Glen Colbost	Twinning pen	A later stone-built twinning pen is located in the N corner of Site 15a. It measures 0.75m by 0.5 and stands up to 0.4m high.	-	Ruinous	Post Medieval	65	5	135452	843532	27	-
15c	Glen Colbost	Twinning pen	A later stone-built twinning pen is located in the SW corner of Site 15a. It measures 0.5m across and stands up to 0.4m high.	-	Ruinous	Post Medieval	65	5	135448	843522	27	-

No.	Site Name	Site Type	Description	Align- ment	Condition	Period	Height OD (m)	Buffer Zone (m)	Easting (centre)	Northing (centre)	Photo No.	HHER No.
15d	Glen Colbost	Byre	A grass-covered drystone subrectangular byre with rounded corners measures 7m NW-SE by 4m over walls 1m wide and up to 1.5m high. There is an entrance in the N corner 1m wide and one later twinning pen within the interior.	NW-SE	Degraded	Post Medieval	65	10	135453	843513	28-29	-
15e	Glen Colbost	Twinning pen	A later stone-built twinning pen is located in the W corner of Site 15d. It measures 1m by 0.75m and stands up to 0.4m high.	-	Ruinous	Post Medieval	65	5	135450	843516	29	-
16a	Mullach Garaidh Dhuibhe	Shieling	Under rushes and grass is stone-turf subcircular double cell shieling. The SE cell measures 5m NW-SE by 4m over walls spread to 2m and up to 0.7m high. There is an entrance 1m wide in the S side; N cell measures 2m across.	NW-SE	Degraded	Post Medieval	55	10	133052	840286	32	-
16b	Mullach Garaidh Dhuibhe	Twinning pen	A later stone-built twinning pen is located in the N half of shieling Site 16a. It measures 2m NW-SE by 1m over walls 0.8m wide and up to 0.4m high.	NW-SE	Ruinous	Post Medieval	55	5	133053	840285	32	-
16c	Mullach Garaidh Dhuibhe	Shieling	Under rushes and grass is stone-turf subcircular double cell shieling measuring 5m across overall. The walls are spread to 1.2m wide and stand up to 0.3m high and the S cell is mostly degraded.	N-S	Very degraded	Post Medieval	55	10	133053	840296	-	-
16d	Mullach Garaidh Dhuibhe	Shieling	Under rushes and grass is stone-turf subcircular double cell shieling measuring 8m NE-SW by 6m overall. The walls spread to 2m and stand up to 0.7m high. It appears to be built over the mostly degraded remains of an earlier structure.	NE-SW	Degraded	Post Medieval	55	10	133058	840304	33	-

No.	Site Name	Site Type	Description	Align- ment	Condition	Period	Height OD (m)	Buffer Zone (m)	Easting (centre)	Northing (centre)	Photo No.	HHER No.
16e	Mullach Garaidh Dhuibhe	Twinning pen	A later stone-built twinning pen overlies an earlier shieling Site 16d. It measures 1.5m across internally.	-	Ruinous	Post Medieval	65	5	133060	840301	33	-
16f	Mullach Garaidh Dhuibhe	Shieling	Under rushes and grass is stone-turf subcircular double cell shieling measuring 8m NW-SE by 5m overall. The walls spread to 1.5m and stand up to 0.25m high.	NW-SE	Degraded	Post Medieval	55	10	133060	840321	34	-
16g	Mullach Garaidh Dhuibhe	Twinning pen	A later stone-built twinning pen overlies an earlier shieling Site 16f. It measures 1.5m across internally.	-	Ruinous	Post Medieval	65	5	133059	840322	34	-
16h	Mullach Garaidh Dhuibhe	Shieling	Under rushes is stone-turf subcircular D-shaped shieling attached to a rock outcrop. It measures 5.5m NW-SE by 4m over walls spread to 1m and standing up to 0.5m high. Two later twinning pens were built within the shieling.	NW-SE	Degraded	Post Medieval	55	10	133040	840304	35-36	-
16i	Mullach Garaidh Dhuibhe	Twinning pen	A later stone-built twinning pen overlies an earlier shieling Site 16h. It measures 0.7m by 0.8m across internally.	-	Ruinous	Post Medieval	65	5	133037	840302	35-36	-
16j	Mullach Garaidh Dhuibhe	Twinning pen	A later stone-built twinning pen overlies an earlier shieling Site 16h. It measures 1.2m by 0.5m across internally.	-	Ruinous	Post Medieval	65	5	133037	840303	35-36	-
17a	Mullach Garaidh Dhuibhe	Structure	Under grass and rushes is a subcircular raised area w/ stones visible on the edges measuring 11m across: the remains of a robbed-out structure for building a portion of the boundary wall to the E. A dip on the E side may be the remains of the entrance.	NNW- SSE	Very degraded	Unknown	60	10	133499	840959	39-40	-

No.	Site Name	Site Type	Description	Align- ment	Condition	Period	Height OD (m)	Buffer Zone (m)	Easting (centre)	Northing (centre)	Photo No.	HHER No.
17b	Mullach Garaidh Dhuibhe	Twinning pen	A later stone-built twinning pen is attached to the E side of the stone-built section of boundary wall. It measures 2m NW-SE by 1m over walls 0.8m wide and up to 0.7m high.	NW-SE	Ruinous	Post Medieval	60	5	133510	840966	41	-
17c	Mullach Garaidh Dhuibhe	Boundary wall	Drystone-built section of a stone/turf boundary wall. It was been built with stones and large upright slabs which may have been robbed from an earlier pre-existing structure to its W.	N-S	Ruinous	Post Medieval	60	5	133506	840975	40	-
18a	Glenostle	House	A stone-built subrectangular house with rounded corners measures 13m N-S by 5.5m over walls 0.75m wide and up to 1.5m high. There is an entrance in the E wall 1m wide, two windows in the W wall and an internal partition with a central fireplace.	N-S	Ruinous	Post Medieval	70	10	134153	842002	42-46	MHG27657
18b	Glenostle	Twinning pen	A later stone-built twinning pen is built against the central partition in house Site 18a. It measures 1.2m N-S by 0.4m and stands up to 0.5m high.	-	Ruinous	Post Medieval	70	5	134154	842001	44	MHG27657
18c	Glenostle	Kaleyard	A stone-built kaleyard measuring 17m across is attached to house Site 18a. There is an entrance in the E wall 1m wide.	-	Ruinous	Post Medieval	70	5	134130	842004	-	MHG27657
18d	Glenostle	House	A grass-covered stone-built subrectangular house with rounded outside corners measures 8m NW-SE by 5m over walls 0.75-1.5m wide and up to 1.5m high. There is an entrance in the NW wall 1.2m wide.	NW-SE	Degraded	Post Medieval	70	10	134200	842024	47	MHG27657

No.	Site Name	Site Type	Description	Align- ment	Condition	Period	Height OD (m)	Buffer Zone (m)	Easting (centre)	Northing (centre)	Photo No.	HHER No.
18e	Glenostle	Byre	A grass-covered stone-built subrectangular byre measures 6.5m NW-SE by 4.5m overall. The walls are spread to 1.5m wide and up to 1m high in places. There are two internal partitions, which have been later modified for use as pens.	NW-SE	Degraded	Post Medieval	70	10	134204	842019	47-49	MHG27657
18f	Glenostle	Twinning pen	A later stone-built twinning pen is built inside byre Site 18e, forming a pen 1m across standing up to 1.4m high.	-	Ruinous	Post Medieval	70	5	134206	842021	48	MHG27657
18g	Glenostle	Twinning pen	A later stone-built twinning pen was built with Site 18e. It measures approximately 1m across.	-	Degraded	Post Medieval	70	5	134205	842018	48	MHG27657
18h	Glenostle	Twinning pen	Remains of a later stone-built twinning pen within Site 18e, measuring approximately 1m across.	-	Degraded	Post Medieval	70	5	134205	842019	48	MHG27657
18i	Glenostle	House	The very degraded remains of a subrectangular possible house, stone and turf-built, are located S of Site 18e under grass and rushes. It measures 8m NW-SE by 5m over walls spread to 1.5m wide and stands up to 0.3m high. There is no visible entrance.	NW-SE	Very degraded	Post Medieval	70	10	134215	842010	49	MHG27657
19a	Dun Arkaig	Shieling	Under rushes and grass is stone-turf D-shaped single cell shieling measuring 6m NE-SW by 4m built against a rock outcrop. The walls are spread to 0.8m wide and stand up to 0.5m high. There are two twinning pens within the shieling.	NE-SW	Degraded	Post Medieval	95	10	134996	842624	55-56	-
19b	Dun Arkaig	Twinning pen	A later stone-built twinning pen is built inside shieling Site 19a, measuring approximately 1m across.	-	Degraded	Post Medieval	95	5	134994	842626	55-56	-

No.	Site Name	Site Type	Description	Align- ment	Condition	Period	Height OD (m)	Buffer Zone (m)	Easting (centre)	Northing (centre)	Photo No.	HHER No.
19c	Dun Arkaig	Twinning pen	A later stone-built twinning pen is built inside shieling Site 19a, measuring approximately 1m across.	-	Degraded	Post Medieval	95	5	134994	842623	55-56	-
20a	Dun Arkaig	Broch	A secondary or external skin of stone walling was visible on the W side of the broch.	-	Degraded	Iron Age	100	20	135000	842637	21, 22, 51, 57, 58, 73	MHG25197 MHG5068
20b	Dun Arkaig	Broch	A subcircular stone-built broch was built on top of a naturally rocky knoll with views to N, E and W. It is in a ruinous state with only part of an entrance visible in the NE wall and one intramural gallery partly visible in the SE quadrant.	-	Degraded	Iron Age	100	20	135003	842635	21, 22, 51, 57, 58, 73	MHG25197 MHG5068
21	Glen Colbost	Structures	Remains of structures comprising fragments of turf banks spread 1.5-2m wide and standing 0.25-0.75m high under dense reeds and grass. They predate the sheepfold Site 23 and may have been partially robbed for its construction.	-	Very degraded	Unknown	80	10	134971	842744	-	MHG45704 MHG27655
22	Glen Colbost	House or byre	A stone/turf subrectangular structure is very degraded measures 15m NW-SE by 7m over walls spread to 2m and surviving to 0.25m high. There is a possible entrance in the NE wall.	NW-SE	Very degraded	Post Medieval	80	10	134996	842759	60	MHG45704 MHG27655
23	Glen Colbost	Sheepfold	A pentagonal stone-built sheepfold postdates the settlement structures and earlier boundary walls on the site. There is an entrance in the N side 1.5m wall and the walls measure 0.75-1m wide.	-	Ruinous	Post Medieval	80	5	135006	842755	21, 22, 59, 61, 74	MHG41789

GUL12 6 Glen Ullinish, Skye: Archaeological Walkover Survey, revised June 2013

No.	Site Name	Site Type	Description	Align- ment	Condition	Period	Height OD (m)	Buffer Zone (m)	Easting (centre)	Northing (centre)	Photo No.	HHER No.
24a	Glen Colbost	Enclosure	Under grass and rushes is a subrectangular turf/stone-built enclosure measuring 20m across over walls spread to 2m wide and standing up to 0.8m high.	-	Degraded	Post Medieval	80	5	135095	842738	59	MHG45704 MHG27655
24b	Glen Colbost	House or byre	A subrectangular turf/stone house is attached to enclosure Site 24a. It measures 16m E-W by 5m over walls spread to 1m wide and standing up to 0.5m high.	E-W	Very degraded	Post Medieval	80	10	135090	842764	-	MHG45704 MHG27655
25	Glen Colbost	Bothy	The very degraded remains of a turf/stone bothy is covered in dense rushes and heather. It measures 6m NW-SE by 4m over walls 0.7m wide and up to 0.5m high. There was no visible entrance	NW-SE	Very degraded	Post Medieval	80	10	135108	842726	-	-
26	Glen Colbost	Bothy	The very degraded remains of a turf/stone bothy is covered in dense rushes and heather. It measures 6m NW-SE by 4m over walls 0.7m wide and up to 0.5m high. There was no visible entrance	NW-SE	Very degraded	Post Medieval	80	10	135099	842679	-	-
27a	Glen Colbost	Shieling or pen	A grass-covered subcircular stone/turf shieling or pen is attached to a turf/stone boundary wall. It measures 2.5m N-S by 1.5m with walls spread to 1.5m and standing up to 0.6m high. The entrance is in the N wall.	N-S	Degraded	Post Medieval	80	10	135110	842760	61	-
27b	Glen Colbost	Shieling or pen	A grass-covered subcircular stone/turf mound attached to a turf/stone boundary wall may be a second shieling. It measures 2.m across.	-	Very degraded	Post Medieval	80	10	135135	842775	-	-

GUL12 6 Glen Ullinish, Skye: Archaeological Walkover Survey, revised June 2013

No.	Site Name	Site Type	Description	Align- ment	Condition	Period	Height OD (m)	Buffer Zone (m)	Easting (centre)	Northing (centre)	Photo No.	HHER No.
28a	Glen Colbost	Bothy	A grass-covered subcircular stone/turf bothy is attached to a stone boundary wall. It measures 3.5m NW-SE by 2m over walls 0.8m wide and up to 0.6m high. The entrance in the E wall is 0.5m wide.	NW-SE	Degraded	Post Medieval	80	10	135142	842849	62	-
28b	Glen Colbost	Twinning pen	A later stone-built twinning pen was built inside Site 28a. It measures 1.2m by 0.7m and stands to 0.4m high.	-	Ruinous	Post Medieval	80	5	135141	842853	62	-
29a	Meashader	Shieling	A moss- and grass-covered subcircular double-cell shieling measures 3m NW-SE by 2m over walls spread to 1.1m and up to 0.3m high. The smaller cell to SE measures 1m across.	NW-SE	Very degraded	Post Medieval	100	10	135490	842864	-	-
29a	Meashader	Shieling	A moss- and grass-covered subcircular double-cell shieling measures 3m NW-SE by 2m over walls spread to 1.1m and up to 0.3m high. The smaller cell to SE measures 1m across.	NW-SE	Very degraded	Post Medieval	100	10	135492	842863	-	-
29b	Meashader	Shieling	Under grass and rushes is a subcircular mound measuring 5m NW-SE by 3m, which may have been a shieling.	NW-SE	Very degraded	Post Medieval	100	10	135501	842848	-	-
29c	Meashader	Shieling	Under grass and rushes is a subcircular mound measuring 4m NW-SE by 3m, which may have been a shieling.	E-W	Very degraded	Post Medieval	100	10	135500	842826	63	-
29d	Meashader	Shieling	Under grass and rushes is a subcircular mound measuring 4m across, which may have been a shieling.	NW-SE	Very degraded	Post Medieval	100	10	135508	842826	-	-
30	Meashader	Still	Under grass and 2m W of the burn, is a stone/turf structure measuring 2.5m N-Se by 1.5m and standing up to 0.7m high. It's location suggests it was a still.	N-S	Very degraded	Post Medieval	70	10	135312	843258	65	-

GUL12 6 Glen Ullinish, Skye: Archaeological Walkover Survey, revised June 2013

No.	Site Name	Site Type	Description	Align- ment	Condition	Period	Height OD (m)	Buffer Zone (m)	Easting (centre)	Northing (centre)	Photo No.	HHER No.
31a	Glen Colbost	Structure	The very degraded remains of moss- and grass-covered stone footings measuring approximately 8m by 6m and surviving up to 0.2m high may have been a structure.	NW-SE	Very degraded	Unknown	60	10	134887	842878	68	-
31b	Glen Colbost	Clearance cairn	A grass- and moss-covered clearance cairn measures 3m by 2m and stands up to 0.4m high	-	Degraded	Post Medieval	60	5	134878	842885	-	-
31c	Glen Colbost	Clearance cairn	A grass- and moss-covered clearance cairn measures 3m by 1m and stands up to 0.4m high	-	Degraded	Post Medieval	60	5	134885	842863	-	-
31d	Glen Colbost	Clearance cairn	A grass- and moss-covered clearance cairn measures 3m by 1m and stands up to 0.4m high	-	Degraded	Post Medieval	60	5	134825	842814	-	-
31e	Glen Colbost	Clearance cairn	A grass- and moss-covered clearance cairn measures 3m by 1m and stands up to 0.4m high	-	Degraded	Post Medieval	60	5	134810	842817	-	-
32	Glen Colbost	Structure	A grass-covered subcircular raised area with stone visible along the edges may have been an earlier structure which is completely degraded away. It measures 7m across, but has been disturbed by later rig and furrow.	-	Very degraded	Unknown	70	10	134771	842717	-	-
33	Glenostle	House/ byre	Under grass and rushes is a stone/turf house/byre measuring 11m NW-SE by 4m over walls spread to 1.5m and standing up to 0.75m high. There is an internal partition and an entrance 1m wide in the NE wall .	NW-SE	Degraded	Post Medieval	55	10	134040	842125	69	MHG27657
34	Glenostle	Possible shieling	A moss- and grass-covered low mound measuring 3m N-S by 2m over walls spread to 0.5m may have been a shieling.	N-S	Very degraded	Post Medieval	55	10	133899	842046	-	-

GUL12 6 Glen Ullinish, Skye: Archaeological Walkover Survey, revised June 2013

No.	Site Name	Site Type	Description	Align- ment	Condition	Period	Height OD (m)	Buffer Zone (m)	Easting (centre)	Northing (centre)	Photo No.	HHER No.
35	Glen Ullinish	Peat cutting	Visible under heather are numerous disused areas of peat cutting.	-	Degraded	Post Medieval	85	0	134016	843241	-	-
36	Glen Ullinish	Clearance cairn	A grass- and moss-covered clearance cairn measures 5m by 2m and stands up to 0.3m high.	-	Degraded	Post Medieval	55	5	134264	843127	-	-
37	Glenostle	Peat cutting	Visible under heather is a disused area of peat cutting.	-	Degraded	Post Medieval	75	0	134048	841875	-	-
38a	Glen Colbost	Clearance cairn	Visible below grass and rushes is a clearance cairn measures 3m by 1m and stands up to 0.4m high	-	Degraded	Post Medieval	75	5	134904	842681	60	-
38b	Glen Colbost	Clearance cairn	Visible below grass and rushes is a clearance cairn measures 4m by 2.5m and stands up to 0.4m high	-	Degraded	Post Medieval	75	5	135000	842767	-	-
38c	Glen Colbost	Clearance cairn	Visible below grass and rushes is a clearance cairn measures 4m by 2m and stands up to 0.6m high	-	Degraded	Post Medieval	75	5	135027	842772	-	-
39	Glen Ullinish	Rig and furrow	The remains of rig and furrow are visible under open pasture; rigs measure 2m wide and furrows 1m wide, surviving up to 0.2m high	NW-SE	Very degraded	Post Medieval	85	0	134357	843455	-	-
40	Glen Ullinish	Rig and furrow	The remains of rig and furrow are visible under open pasture; rigs measure 1.5m wide and furrows 1m wide, surviving up to 0.2m high	NW-SE	Very degraded	Post Medieval	80	0	134169	843339	-	-
41	Glen Ullinish	Rig and furrow	The remains of rig and furrow are visible under open pasture; rigs measure 1.5m wide and furrows 1m wide, surviving up to 0.2m high	NW-SE	Very degraded	Post Medieval	75	0	134052	843118	-	-
42	Glen Ullinish	Rig and furrow	The remains of rig and furrow are visible under open pasture; rigs measure 1m wide and furrows 1m wide, surviving up to 0.2m high	NW-SE	Very degraded	Post Medieval	50	0	134064	842744	-	-

GUL12 6 Glen Ullinish, Skye: Archaeological Walkover Survey, revised June 2013

No.	Site Name	Site Type	Description	Align- ment	Condition	Period	Height OD (m)	Buffer Zone (m)	Easting (centre)	Northing (centre)	Photo No.	HHER No.
43	Glen Ullinish	Rig and furrow	The remains of rig and furrow are visible under open pasture; rigs measure 1.5m wide and furrows 1m wide, surviving up to 0.2m high	NW-SE	Very degraded	Post Medieval	45	0	134114	842704	-	-
44	Glen Ullinish	Rig and furrow	The remains of rig and furrow are visible under open pasture; rigs measure 1.5m wide and furrows 1m wide, surviving up to 0.2m high	NW-SE	Very degraded	Post Medieval	60	0	134116	842984	-	-
45	Glen Ullinish	Rig and furrow	The remains of rig and furrow are visible under open pasture; rigs measure 1.5m wide and furrows 1m wide, surviving up to 0.2m high	NW-SE	Very degraded	Post Medieval	65	0	134242	843077	-	-
46	Glen Ullinish	Rig and furrow	The remains of rig and furrow are visible under open pasture; rigs measure 2.5m wide and furrows 0.7m wide, surviving up to 0.25m high	NW-SE	Very degraded	Post Medieval	50	0	134474	843173	-	-
47	Glen Colbost	Rig and furrow	The remains of rig and furrow are visible under open pasture; rigs measure 2.5m wide and furrows 1m wide, surviving up to 0.3m high	NW-SE	Very degraded	Post Medieval	65	0	135451	843470	-	-
48	Glen Colbost	Rig and furrow	The remains of rig and furrow are visible under open pasture; rigs measure 2m wide and furrows 1m wide, surviving up to 0.3m high	WNW-ESE	Very degraded	Post Medieval	65	0	135401	843421	-	-
49	Glen Colbost	Rig and furrow	The remains of rig and furrow are visible under open pasture; rigs measure 2.5m wide and furrows 1m wide, surviving up to 0.3m high	ENE-WSW	Very degraded	Post Medieval	65	0	135344	843365	-	-
50	Glen Colbost	Rig and furrow	The remains of rig and furrow are visible under open pasture; rigs measure 2m wide and furrows 1m wide, surviving up to 0.3m high	ENE-WSW, WNW-ESE	Very degraded	Post Medieval	65	0	135284	843425	-	-

No.	Site Name	Site Type	Description	Align- ment	Condition	Period	Height OD (m)	Buffer Zone (m)	Easting (centre)	Northing (centre)	Photo No.	HHER No.
51	Glen Colbost	Rig and furrow	The remains of rig and furrow are visible under open pasture; rigs measure 2m wide and furrows 1m wide, surviving up to 0.3m high	NNW-ESE	Very degraded	Post Medieval	50	0	134839	843321	-	-
52	Glenostle	Rig and furrow	The remains of rig and furrow are visible under open pasture; rigs measure 1.5-2m wide and furrows 1m wide, surviving up to 0.2m high	NW-SE	Very degraded	Post Medieval	65	0	134465	842261	-	-
53	Glenostle	Rig and furrow	The remains of rig and furrow are visible under open pasture; rigs measure 1.5-2m wide and furrows 1m wide, surviving up to 0.2m high	NW-SE	Very degraded	Post Medieval	65	0	134529	842317	-	-
54	Glen Colbost	Rig and furrow	The remains of rig and furrow are visible under grass and heather; rigs measure 2.5m wide and furrows 0.8m wide, surviving up to 0.4m high	NE-SW NE-SW	Very degraded	Post Medieval	75	0	135006	842799	-	-
55	Glenostle	Rig and furrow	The remains of rig and furrow are visible under open pasture; rigs measure 1.5-2m wide and furrows 1m wide, surviving up to 0.2m high	NNW-SSE NNW-SSE	Very degraded	Post Medieval	40	0	133824	842146	-	-
56	Glenostle	Rig and furrow	The remains of rig and furrow are visible under open pasture; rigs measure 1.5-2m wide and furrows 1m wide, surviving up to 0.2m high	NNW-SSE NNW-SSE	Very degraded	Post Medieval	60	0	134035	842056	-	-
57	Glenostle	Rig and furrow	The remains of rig and furrow are visible under open pasture; rigs measure 1.5-2m wide and furrows 1m wide, surviving up to 0.2m high	E-W	Very degraded	Post Medieval	60	0	133977	842019	-	-
58	Glenostle	Rig and furrow	The remains of rig and furrow are visible under grass and heather; rigs measure 1.5-2m wide and furrows 1m wide, surviving up to 0.2m high	E-W, N-S	Very degraded	Post Medieval	65	0	134282	842120	-	-

GUL12 6 Glen Ullinish, Skye: Archaeological Walkover Survey, revised June 2013

No.	Site Name	Site Type	Description	Align- ment	Condition	Period	Height OD (m)	Buffer Zone (m)	Easting (centre)	Northing (centre)	Photo No.	HHER No.
59	Glenostle	Rig and furrow	The remains of rig and furrow are visible under grass and heather; rigs measure 1.5-2m wide and furrows 1m wide, surviving up to 0.2m high	NW-SE	Very degraded	Post Medieval	55	0	134325	842270	-	-
60	Glenostle	Rig and furrow	The remains of rig and furrow are visible under grass and heather; rigs measure 1.5-2m wide and furrows 1m wide, surviving up to 0.2m high	NW-SE	Very degraded	Post Medieval	60	0	134569	842425	-	-
61	Glen Ullinish	Boundary wall	Turf/stone boundary wall, comprising walls spread 1.5-2.5m wide and surviving 0.5-1.2m high, encloses an area of rig and furrow.	-	Degraded	Post Medieval	-	5	134408	843528	-	-
62	Glen Ullinish	Boundary wall	Very degraded stone/turf wall, formed part of an earlier boundary wall.	-	Very degraded	Post Medieval	-	5	134333	843534	-	-
63	Glen Ullinish	Boundary wall	Turf boundary wall spread to 2m and standing up to 1m high	-	Very degraded	Post Medieval	-	5	134258	843323	-	-
64	Glen Ullinish	Boundary wall	Stone boundary wall spread to 1.2m and standing up to 0.6m high, overlies earlier structures and encloses settlement Sites 3 and 7	-	Very degraded	Post Medieval	-	5	134198	843282	-	-
65	Glen Ullinish	Boundary wall	Turf boundary wall spread to 1m and standing up to 0.5m high	-	Very degraded	Post Medieval	-	5	134049	843192	-	-
66	Glen Ullinish	Boundary wall	Turf/stone boundary wall, comprising walls spread 2-2.5m wide and surviving 0.5-1m high, encloses an area of rig and furrow.	-	Degraded	Post Medieval	-	5	133991	843118	-	-
67	Glen Ullinish	Boundary wall	Turf/stone boundary wall, comprising walls spread 2-2.5m wide and surviving 0.5-1m high, encloses areas of rig and furrow.	-	Degraded	Post Medieval	-	5	134150	843167	-	-
68	Glen Ullinish	Boundary wall	Turf/stone boundary wall, comprising walls spread 2-2.5m wide and surviving 0.5-1m high, encloses an area of rig and furrow.	-	Degraded	Post Medieval	-	5	134156	843048	-	-

GUL12 6 Glen Ullinish, Skye: Archaeological Walkover Survey, revised June 2013

No.	Site Name	Site Type	Description	Align- ment	Condition	Period	Height OD (m)	Buffer Zone (m)	Easting (centre)	Northing (centre)	Photo No.	HHER No.
69	Glen Ullinish	Boundary wall	Turf/stone boundary wall, comprising walls spread 2-2.5m wide and surviving 0.3-7m high, encloses an area of rig and furrow.	-	Degraded	Post Medieval	-	5	134345	843029	-	-
70	Glen Ullinish	Boundary wall	Turf/stone boundary wall, comprising walls spread 2-2.5m wide and surviving 0.3-1m high.	-	Degraded	Post Medieval	-	5	134396	843210	-	-
71	Glen Ullinish	Boundary wall	Turf/stone boundary wall, comprising walls spread 2m wide and surviving 0.7m high.	-	Very degraded	Post Medieval	-	5	134369	843298	-	-
72	Glen Ullinish	Boundary wall	Turf/stone boundary wall, comprising walls spread 1m wide and surviving 0.4m high.	-	Very degraded	Post Medieval	-	5	133906	842860	-	-
73	Glen Ullinish	Boundary wall	Turf/stone boundary wall, comprising walls spread 2m wide and surviving 0.3m high.	-	Very degraded	Post Medieval	-	5	133881	842857	-	-
74	Glen Ullinish	Boundary wall	Turf/stone boundary wall, comprising walls spread to 1.2-2.5m wide and surviving 0.8-1.2m high.	-	Degraded	Post Medieval	-	5	133909	842819	-	-
75	Glen Ullinish	Boundary wall	Turf/stone boundary wall, comprising walls spread to 2m wide and surviving 0.5m high.	-	Very degraded	Post Medieval	-	5	134128	842726	-	-
76	Glenostle	Boundary wall	Turf/stone boundary wall, comprising walls spread to 2-3m wide and surviving up to 1m high.	-	Very degraded	Post Medieval	-	5	133304	842257	-	MHG54292
77	Glenostle	Boundary wall	Turf/stone boundary wall, comprising walls spread to 1-2m wide and surviving 0.5-0.8m high.	-	Very degraded	Post Medieval	-	5	133405	842163	-	MHG54292
78	Glenostle	Boundary wall	Turf/stone boundary wall, comprising walls spread to 1-1.5m wide and surviving 0.8-1.5m high.	-	Degraded	Post Medieval	-	5	133514	842307	-	-
79	Glenostle	Boundary wall	Turf boundary wall, comprising walls 1m wide and surviving to 0.3m high.	-	Very degraded	Post Medieval	-	5	133602	842318	-	-

GUL12 6 Glen Ullinish, Skye: Archaeological Walkover Survey, revised June 2013

No.	Site Name	Site Type	Description	Align-ment	Condition	Period	Height OD (m)	Buffer Zone (m)	Easting (centre)	Northing (centre)	Photo No.	HHER No.
80	Glen Ullinish	Boundary wall	Turf boundary wall, comprising walls 1-1.5m wide and surviving to 0.3m high.	-	Very degraded	Post Medieval	-	5	134473	843103	-	-
81	Glen Colbost	Boundary wall	Turf/stone boundary wall, comprising walls spread to 1-1.5m wide and surviving 0.6-1m high, encloses area of rig and furrow	-	Degraded	Post Medieval	-	5	134812	843371	-	-
82	Glen Colbost	Boundary wall	Turf/stone boundary wall, comprising walls spread to 1.5-2m wide and surviving 1-1.5m high.	-	Degraded	Post Medieval	-	5	134895	843435	-	-
83	Glen Colbost	Boundary wall	Turf/stone boundary wall, comprising walls spread to 1.5-2m wide and surviving 0.3-1m high, encloses rig and furrow.	-	Degraded	Post Medieval	-	5	135306	843387	-	-
84	Glen Colbost	Boundary wall	Turf/stone boundary wall, comprising walls spread to 1.2m wide and surviving 0.8m high.	-	Very degraded	Post Medieval	-	5	135218	843465	-	-
85	Glen Colbost	Boundary wall	Turf/stone boundary wall, comprising walls spread to 1m wide and surviving 0.6m high, encloses area of rig and furrow and forms part of settlement Site 15 boundary	-	Very degraded	Post Medieval	-	5	135405	843538	30-31, 67	-
86	Glen Colbost	Boundary wall	Turf/stone boundary wall, comprising walls spread to 1.5m wide and surviving 0.6m high, encloses area of rig and furrow and forms part of settlement Site 15 boundary	-	Very degraded	Post Medieval	-	5	135475	843490	-	-
87	Glen Colbost	Boundary wall	Turf/stone boundary wall, comprising walls spread to 1m wide and surviving 0.5m high	-	Very degraded	Post Medieval	-	5	135498	843619	-	-
88	Glen Colbost	Boundary wall	Turf boundary wall, comprising walls spread to 1m wide and surviving 0.4m high	-	Very degraded	Post Medieval	-	5	135762	843669	-	-
89	Glen Colbost	Boundary wall	Turf boundary wall, comprising walls spread to 1.5m wide and 0.6m high	-	Very degraded	Post Medieval	-	5	135728	843836	-	-

GUL12 6 Glen Ullinish, Skye: Archaeological Walkover Survey, revised June 2013

No.	Site Name	Site Type	Description	Align- ment	Condition	Period	Height OD (m)	Buffer Zone (m)	Easting (centre)	Northing (centre)	Photo No.	HHER No.
90	Glen Colbost	Boundary wall	Turf/stone boundary wall, comprising walls spread to 1.5-2m wide and surviving 1-1.5m high	-	Very degraded	Post Medieval	-	5	135621	843676	-	-
91	Glen Colbost	Boundary wall	Turf boundary wall, comprising walls spread to 1m wide and surviving 0.8m high	-	Degraded	Post Medieval	-	5	135116	843578	-	-
92	Glen Colbost	Boundary wall	Stone/turf wall spread 1.5-2m and standing up to 1.2m high, encloses areas of rig and furrow and marks transition from cultivation to moorland	-	Degraded	Post Medieval	-	5	135471	843410	66	-
93	Glen Colbost	Boundary wall	Stone/turf wall spread 2m and standing up to 0.8m high	-	Very degraded	Post Medieval	-	5	134942	843179	-	-
94	Glen Colbost	Boundary wall	Stone/turf wall spread to 1.2m and standing up to 0.8m high	-	Very degraded	Post Medieval	-	5	134802	843170	-	-
95	Glen Colbost	Boundary wall	Stone/turf wall spread to 1.2m and standing up to 0.8m high	-	Degraded	Post Medieval	-	5	134833	842927	-	-
96	Glen Colbost	Boundary wall	Stone/turf wall spread to 1m and standing up to 0.4m high	-	Very degraded	Post Medieval	-	5	135084	842936	-	-
97	Glen Colbost	Boundary wall	Stone/turf wall spread to 1-1.5m and standing up to 0.5m high	-	Very degraded	Post Medieval	-	5	135092	842878	-	-
98	Glen Colbost	Boundary wall	Stone/turf wall spread to 1.5m and standing up to 0.8m high	-	Very degraded	Post Medieval	-	5	135075	842673	-	-
99	Glen Colbost	Boundary wall	Stone/turf wall spread to 1.5-2m and standing up to 0.5m high	-	Very degraded	Post Medieval	-	5	135016	842694	-	-
100	Glen Colbost	Boundary wall	Stone/turf wall spread to 2-2.5m and standing up to 1.2m high, ends in boggy land	-	Degraded	Post Medieval	-	5	134851	842744	-	-
101	Glen Colbost	Boundary wall	Stone boulder wall comprising one course of stonework	-	Very degraded	Unknown	-	5	134810	842728	-	-
102	Glen Colbost	Boundary wall	Stone/turf wall spread to 1.5m and standing up to 0.7m high	-	Very degraded	Post Medieval	-	5	134910	842589	-	-
103	Glen Colbost	Boundary wall	Stone/turf wall spread to 1.3m and standing up to 0.5m high	-	Very degraded	Post Medieval	-	5	134860	842493	-	-

GUL12 6 Glen Ullinish, Skye: Archaeological Walkover Survey, revised June 2013

No.	Site Name	Site Type	Description	Align- ment	Condition	Period	Height OD (m)	Buffer Zone (m)	Easting (centre)	Northing (centre)	Photo No.	HHER No.
104	Glen Colbost	Boundary wall	Stone/turf wall spread 1.5m and standing up to 1m high, encloses areas of rig and furrow and marks transition from cultivation to moorland	-	Degraded	Post Medieval	-	5	134574	842291	-	-
105	Glen Colbost	Boundary wall	Stone/turf wall spread 1.5m and standing up to 0.7m high, encloses areas of rig and furrow	-	Degraded	Post Medieval	-	5	134480	842369	-	-
106	Glen Colbost	Boundary wall	Stone/turf wall spread 1.5m and standing up to 0.7m high, encloses areas of rig and furrow	-	Degraded	Post Medieval	-	5	134423	842322	-	-
107	Glen Colbost	Boundary wall	Stone/turf wall spread 1.5m and standing up to 0.7m high, encloses areas of rig and furrow	-	Degraded	Post Medieval	-	5	134300	842215	-	-
108	Glenostle	Boundary wall	Stone/turf wall spread 1.5m and standing up to 0.7m high, encloses areas of rig and furrow	-	Degraded	Post Medieval	-	5	134179	842092	-	-
109	Glenostle	Boundary wall	Stone/turf wall spread 1.5m and standing up to 0.7m high, encloses area of rig and furrow	-	Degraded	Post Medieval	-	5	134212	842076	-	-
110	Glenostle	Boundary wall	Stone/turf wall spread 1.5-2m and standing up to 1m high	-	Very degraded	Post Medieval	-	5	134166	842256	-	-
111	Glenostle	Boundary wall	Linear spread of stone, probable remains of a boundary wall	-	Very degraded	Unknown	-	5	134207	842169	-	-
112	Glenostle	Boundary wall	Stone/turf wall spread to 1.5m and standing up to 0.5m high; part of the settlement Site 18 boundary	-	Very degraded	Post Medieval	-	5	134162	842023	-	-
113	Glenostle	Boundary wall	Stone/turf wall spread to 1.5m and standing up to 0.5m high	-	Very degraded	Post Medieval	-	5	134183	841850	-	-
114	Glenostle	Boundary wall	Stone/turf wall spread to 1.5m and standing up to 0.5m high	-	Very degraded	Post Medieval	-	5	133975	842049	-	-
115	Glenostle	Boundary wall	Turf wall spread to 1.5m and standing up to 0.3m high	-	Very degraded	Post Medieval	-	5	133832	842049	-	-
116	Glenostle	Boundary wall	Stone/turf wall spread to 1.5m and standing up to 0.5m high	-	Very degraded	Post Medieval	-	5	133694	841016		-

GUL12 6 Glen Ullinish, Skye: Archaeological Walkover Survey, revised June 2013

No.	Site Name	Site Type	Description	Align-ment	Condition	Period	Height OD (m)	Buffer Zone (m)	Easting (centre)	Northing (centre)	Photo No.	HHER No.
117	Glenostle	Boundary wall	Turf wall spread to 1.5m and standing up to 0.3m high	-	Very degraded	Post Medieval	-	5	133663	840947	-	-
118	Glenostle	Boundary wall	Alignment of single course of stones/boulders, disappears into peat	-	Very degraded	Unknown	-	5	133393	840869	-	-
119	Mullach Garaidh Dhuibhe	Boundary wall	Stone/turf wall spread to 1.5m and standing up to 0.5m high, associated with shieling settlement Site 16	-	Very degraded	Post Medieval	-	5	133097	840303	-	-
120	Mullach Garaidh Dhuibhe	Boundary wall	Sub-peat dyke, alignment of upright boulders mostly consumed by peat	-	Very degraded	Unknown	-	5	133386	840124	-	-
121	Mullach Garaidh Dhuibhe	Boundary wall	Stone/turf wall spread to 1m and standing up to 0.5m high	-	Very degraded	Post Medieval	-	5	133219	839884	-	-
122	Meashader	Boundary wall	Turf wall spread to 1.5m and standing up to 0.8m high	-	Very degraded	Post Medieval	-	5	135533	842796	-	-
123	Meashader	Boundary wall	Turf wall spread to 1m and standing up to 0.8m high	-	Very degraded	Post Medieval	-	5	135466	842973	-	-
124	Ben Toirlean	Boundary wall	A grass- and heather-covered stone/turf boundary dyke with banks spread to 0.8m wide and standing up to 0.4m high.	NE-SW	Very degraded	Post Medieval	55		132684	839845	-	-
125a	Ben Toirlean	Quarry	A grass-covered, disused quarry is located close to the main road.	NW-SE	Degraded	Post Medieval	55	0	132624	839771	77	-
125b	Ben Toirlean	Quarry	A grass-covered, disused quarry is located close to the main road.	NW-SE	Degraded	Post Medieval	55	0	132652	839755	-	-
126	Ben Toirlean	Mound	A grass-covered suboval stony mound in an area of rushes measures 6m NW-SE by 4.5m and stands up to 0.25m high. It appears as a compact surface with small stones and a possible very slight circular bank on the SW side. Possible robbed out structure.	NW-SE	Very degraded	Unknown	55	5	132682	839724	75-76	-

No.	Site Name	Site Type	Description	Align- ment	Condition	Period	Height OD (m)	Buffer Zone (m)	Easting (centre)	Northing (centre)	Photo No.	HHER No.
127	Ben Toirlean	Shieling or pen	Attached to the base of a rock outcrop under grass and rushes is a subcircular turf-built pen or shieling measuring 2.5m in diameter internally with banks spread up to 1m wide and standing up to 0.4m high. It is an entrance 0.8m wide in ENE end.	-	Very degraded	Unknown	60	10	132810	839778	78-79	-
128	Mullach Garaidh Dhuibhe	Shieling or pen	The degraded remains of grass/heather-covered boulder-built shieling or pen measures 8m NW-SE by 4m overall w/ walls spread to 1.5m wide and standing up to 0.35m high. The SW side of the walling is best preserved and there is no visible entrance.	NW-SE	Very degraded	Unknown	65	10	133173	840324	80-81	-
129	Ben Toirlean	Peat cutting	This heather-covered, low-lying area has been extensively used for peat cutting in the past.	-	Degraded	Post Medieval			132999	839861	-	-

APPENDIX 2 Glen Ullinish: Index of Photographs

No.	Direction Facing	Site No.	Notes	Taken By	Date
1	ESE	1	Looking across the grazings towards stone/turf house and byre in the N corner of Red survey area	MKP	04/05/2012
2	SE	1a, 1b, 1c	Looking over Site 1, ruinous stone/turf house and byre with later twinning pens built within interior	MKP	04/05/2012
3	SSE	1a, 1c	Stone-built twinning pen (1c) in SE corner of Site 1a	MKP	04/05/2012
4	SE	1a, 1c, 61	Stone-built twinning pen (1c) in SE corner of Site 1a and stone/turf dyke running along W side of the structure	MKP	04/05/2012
5	S	2	Disused possible quarry with remains of a bank at the base	MKP	04/05/2012
6	ESE	4	Looking across grazings towards raised area of Site 4, stone alignments from unknown and mostly degraded structure(s)	MKP	04/05/2012
7	SSW	3	View S across multi-period abandoned settlement at Glen Ullinish	MKP	04/05/2012
8	WNW	3h, 3j	Ruinous drystone house Site 3h with later twinning pen, Site 3j, constructed in the SW corner	MKP	04/05/2012
9	ENE	3d, 3h	Looking across the enclosed area towards the abandoned Glen Ullinish settlement, Site 3	MKP	04/05/2012
10	NE	5, 3d 3h	Looking across the enclosed area and over N edge of disused quarry, Site 5, towards the abandoned Glen Ullinish settlement, Site 3	MKP	04/05/2012
11	NNE	3c, 3d, 3h	Ruined house, Site 3h and ruined byre 3d and house 3c in background	MKP	04/05/2012
12	SW	6	Stone setting of unknown use--modern hearth used by campers?	MKP	04/05/2012
13	SE	7, 7b, 64	View across probable earlier settlement, Site 7, at Glen Ullinish with Site 3 in background; later stone-built twinning pen (7b) attached to stone/turf boundary wall (64) is in the centre of the photograph	MKP	04/05/2012
14	ESE	7, 7b, 64	View across probable earlier settlement, Site 7, at Glen Ullinish with Site 3 in background; later stone-built twinning pen (7b) attached to stone/turf boundary wall (64) is in the centre of the photograph	MKP	04/05/2012
15	SSE	7f, 3	Degraded stone/turf house or byre (7f) with Site 3 in background	MKP	04/05/2012

No.	Direction Facing	Site No.	Notes	Taken By	Date
16	SE	-	View across NE side of red survey area looking towards orange survey area, River Ose and Dun Arkaig	MKP	04/05/2012
17	ESE	8a	A moss- and grass-covered stone-built shieling or bothy located at the base of a rock outcrop	MKP	04/05/2012
18	E	8b	A moss- and grass-covered stone-built shieling or bothy located at the base of a rock outcrop	MKP	04/05/2012
19	SE	9	Stone/turf house or byre built on top of an outcrop, under grass and rushes	MKP	04/05/2012
20	WSW	10b	A grass-covered stone/turf subrectangular house abutting Site 10a byre to right	MKP	04/05/2012
21	ESE	20, 23	View from Red survey area across to Dun Arkaig with the broch on top, and late 18th/early 19th c. stone sheepfold to the left	MKP	04/05/2012
22	ESE	20, 23	View across Red survey area towards Orange survey area and Dun Arkaig in background	MKP	04/05/2012
23	SSE	-	View over Red survey area across to the Orange survey area	MKP	04/05/2012
24	SE	13	A grass-covered stone/turf subrectangular pen attached to a stone/turf boundary wall on a low terrace above River Ose	MKP	04/05/2012
25	SE	69	View down stone/turf boundary wall forming part of a field enclosure at Glen Ullinish	MKP	04/05/2012
27	NNW	15a	Ruined stone/turf house at Glen Calbost with twinning pens in N and SW corners	MKP	04/05/2012
28	SW	15d	Looking through entrance of ruinous stone/turf byre	MKP	04/05/2012
29	S	15d	Ruined stone/turf byre with twinning pen in W corner	MKP	04/05/2012
30	NW	85	Looking northward across stone/turf dyke in Glen Calbost	MKP	04/05/2012
31	N	85	View over stone/turf dyke across towards existing wind turbines in background in Glen Vic Askill	MKP	04/05/2012
32	SSW	16a, 16b	Stone/turf shieling (16a) with later stone twinning pen (16b); looking across the moor and proposed access route towards Loch Bracadale	MKP	05/05/2012
33	NE	16d, 16e	Stone/turf double cell shieling (16d) and later stone twinning pen (16e); background view across proposed access track	MKP	05/05/2012
34	NE	16f, 16g	Stone/turf shieling (16f) with later stone twinning pen (16g)	MKP	05/05/2012
35	ESE	16h, 16j, 16i	Stone/turf shieling (16h) built against rock outcrop with later stone twinning pen (16i)	MKP	05/05/2012

No.	Direction Facing	Site No.	Notes	Taken By	Date
36	NE	16h, 16j, 16i	Stone/turf shieling (16h) built against rock outcrop with later stone twinning pens (16i, 16j)	MKP	05/05/2012
37	SW	16	View southward across the proposed access track, the green mound in centre is the location of the shieling settlement Site 16 and green linear feature to centre left is the associated stone/turf boundary wall Site 119	MKP	05/05/2012
38	NE	-	Looking up through Glen Ullinish across the survey area and River Ose in background	MKP	05/05/2012
39	WNW	17a	Site 17a, feeding area for sheep	MKP	05/05/2012
40	N	17	Slightly raised circular grass-covered mound, Site 17a, in centre left of photo with the stone-built section of the boundary dyke, Site 17c, very visible to centre right of photo	MKP	05/05/2012
41	WSW	17b	Later stone-built twinning pen attached the stone boundary dyke	MKP	05/05/2012
42	N	18	View across SW portion of Orange survey area to Glenostle settlement, Site 18	MKP	05/05/2012
43	NW	18a	Ruined stone-built house at Glenostle, Site 18a	MKP	05/05/2012
44	NE	18a, 18b	Ruined stone-built house at Glenostle, Site 18a, and later twinning pen (18b) visible in corner of house (centre right)	MKP	05/05/2012
45	SSW	18a	Ruined stone-built house at Glenostle, Site 18a	MKP	05/05/2012
46	SSW	18a	Ruined stone-built house at Glenostle, Site 18a	MKP	05/05/2012
47	S	18d, 18e	Ruined stone-built house (18d) and byre (18e) in background	MKP	05/05/2012
48	NNW	18e, 18f	Ruined byre and later twinning pen	MKP	05/05/2012
49	N	18e, 18i	Ruined stone byre (18e) in background and very degraded stone/turf structure (18i) in foreground	MKP	05/05/2012
50	E	102	View across stone/turf dyke marking boundary between cultivated land and heather-covered moorland; dyke runs across to Dun Arkaig in background	MKP	05/05/2012
51	ENE	20, 102	Post Medieval boundary dyke running up to the knoll of Dun Arkaig broch	MKP	05/05/2012
52	W	-	Looking across the survey area from Dun Arkaig towards Loch Bracadale and Macleod's Tables	MKP	05/05/2012
53	N	-	Looking N over Dun Arkaig broch across the survey area	MKP	05/05/2012

No.	Direction Facing	Site No.	Notes	Taken By	Date
54	WNW	-	Looking across the survey area from Dun Arkaig towards Loch Bracadale and Macleod's Tables	MKP	05/05/2012
55	SW	19a	Stone/turf shieling attached to rock outcrop at base of Dun Arkaig to SW side	MKP	05/05/2012
56	W	19a	Stone/turf shieling attached to rock outcrop at base of Dun Arkaig to SW side	MKP	05/05/2012
57	SW	20a	View across broch on top of Dun Arkaig, showing the circular shape and rubble tumble at the centre; a later cairn marks the site	MKP	05/05/2012
58	SW	20a	Looking up to Dun Arkaig showing one preserved outer face of walling of the broch, Site 20a	MKP	05/05/2012
59	NE	23, 24a	Turf/stone oval enclosure, Site 24a, in centre right of photo to the right of later stone-built sheepfold, Site 23	MKP	05/05/2012
60	WNW	22, 38b	Under dense reeds, a sub-rectangular turf/stone structure (22), very degraded, and clearance cairn (38b) to right	MKP	05/05/2012
61	SW	23, 27a	Stone/turf shieling or pen (27a) attached to stone/turf dyke and stone-built sheepfold (23) in background	MKP	05/05/2012
62	N	28a, 28b	Stone/turf bothy (28a) attached to stone/turf dyke; later stone-built twinning pen (28b) inside	MKP	05/05/2012
63	NW	29c	Remains of stone/turf shieling below Lynn; located at about 100m OD above the burn	MKP	05/05/2012
64	NNW	-	Looking northward across the survey area, from the E end of the orange area towards the existing wind turbines	MKP	05/05/2012
65	E	30	Very degraded remains of stone/turf built possible still, revetted into hillslope and located 2m from the edge of the burn (GPS for scale)	MKP	05/05/2012
66	NE	92	View across stone/turf dyke marking boundary between cultivated land and heather-covered moorland	MKP	05/05/2012
67	NW	85	Looking down stone/turf dyke across the NE side of Orange survey area	MKP	05/05/2012
68	N	31	Very degraded stone/turf bank (31a, below Lynn) and several small, low clearance cairns	MKP	05/05/2012
69	SSE	33	Under grass and rushes is a stone/turf house/byre with an internal partition	MKP	05/05/2012
70	SW	120	Looking SW along sub-peat dyke running out towards Loch Bracadale	LF	05/05/2012
71	NNE	120	Alignment of upright boulders forming probable early stone dyke, possibly prehistoric	LF	05/05/2012

No.	Direction Facing	Site No.	Notes	Taken By	Date
72	SW	120	Alignment of upright boulders forming probable early stone dyke, possibly prehistoric	LF	05/05/2012
73	NW	20	Iron Age broch on top of Dun Arkaig	LF	05/05/2012
74	NE	23	Late 19th/early 20th c. stone-built sheepfold at the base of the NE side of Dun Arkaig	LF	05/05/2012
75	W	126	Grass-covered stony mound, possible robbed out structure	MKP	14/06/2013
76	N	126	Grass-covered stony mound, possible robbed out structure	MKP	14/06/2013
77	NNW	125a	Disused, grass-covered quarry	MKP	14/06/2013
78	NW	127	South bank of shieling or pen attached to rock outcrop	MKP	14/06/2013
79	E	127	Remains of shieling or pen attached to rock outcrop	MKP	14/06/2013
80	WNW	128	Degraded remains of a boulder-built shieling or pen	MKP	14/06/2013
81	W	128	Degraded remains of a boulder-built shieling or pen	MKP	14/06/2013

APPENDIX 9.2 – CULTURAL HERITAGE PLATES

To accompany **Chapter 9 – Cultural Heritage/Archaeology, Volume I (ES)**

Indirect Visual Impact Site Visit: 27th & 28th of August 2013



Plate 1: View to the north-east across SM 2



Plate 2: View to the north towards the development, taken from SM 2



Plate 3: View to the south-west across SM 7



Plate 4: View to the north-east towards proposed development, from SM 7



Plate 5: View to west north-west across peninsula that SM 9 is located upon



Plate 6: View to west north-west across SM 12



Plate 7: View to the east towards the development, taken from SM 12



Plate 8: View to the west across SM 13



Plate 9: View to the east across SM 6, direction of development



Plate 10: View to the south south-east taken from SM 6

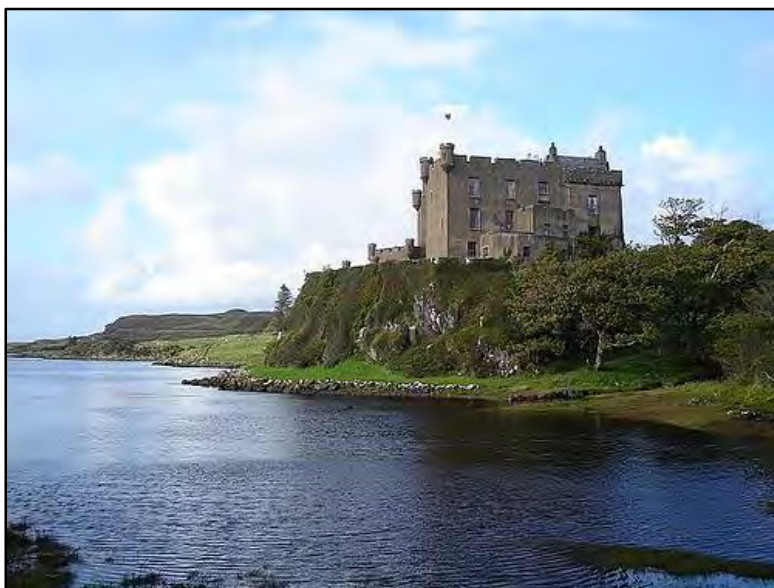


Plate 11: View to the north towards Dunvegan Castle¹



Plate 12: View to the east north-east towards Dunvegan Castle²

Reference Plate 11:- http://www.google.co.uk/imgres?sa=X&rls=com.microsoft:en-gb:IE-SearchBox&rlz=117ADFA_enGB465&biw=1680&bih=882&tbn=isch&tbnid=dUxUShIjfuVMwM:&imgrefurl=http://openroadscotland.com/tag/dunvegan-castle/&docid=hF6Lb24UMRdRMM&imgurl=http://openroadscotland.com/wp-content/uploads/2012/02/Dunvegan_castle.jpg&w=500&h=375&ei=aZRzUuzTB-qK0AXC7oDgBA&zoom=1&iact=rc&page=1&tbnh=134&tbnw=171&start=0&ndsp=40&ved=1t:429,r:9,s:0,j:116&tx=134&ty=91

Reference Plate 12:- http://www.google.co.uk/imgres?sa=X&rls=com.microsoft:en-gb:IE-SearchBox&rlz=117ADFA_enGB465&biw=1680&bih=882&tbn=isch&tbnid=vB_VcKIMtV5_PM:&imgrefurl=http://www.scotland-flavour.co.uk/waternish.html&docid=Jka7puaci_7xgM&imgurl=http://www.scotland-flavour.co.uk/pictures/dunvegan_skye_scotland_1393.jpg&w=666&h=452&ei=aZRzUuzTB-qK0AXC7oDgBA&zoom=1&iact=hc&vpx=2&vpy=398&dur=2327&hovh=185&hovw=273&tx=156&ty=99&page=2&tbnh=148&tbnw=224&start=40&ndsp=48&ved=1t:429,r:56,s:0,i:263