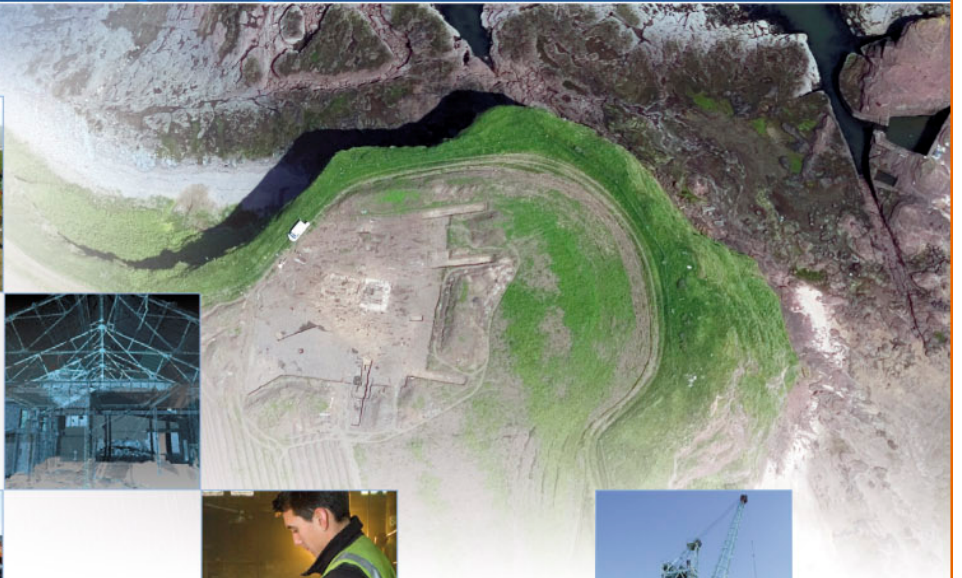
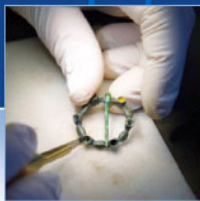


# Feature 4, Fairburn Windfarm: Archaeological Evaluation Data Structure Report

20943

August 2008



## Feature 4, Fairburn Windfarm - Archaeological Evaluation: Data Structure Report

<b>On Behalf of:</b>	<b>Scottish and Southern Energy plc,</b> Inveralmond House 200 Dunkeld Road Perth PH1 3AQ
<b>National Grid Reference (NGR):</b>	<b>NH 4200 5200</b>
<b>AOC Project No:</b>	<b>20943</b>
<b>Prepared by:</b>	<b>Alan Duffy</b>
<b>Illustration by:</b>	<b>Douglas Park</b>
<b>Date of Fieldwork:</b>	<b>26<sup>th</sup> August 2008</b>
<b>Date of Report:</b>	<b>8<sup>th</sup> September 2008</b>

This document has been prepared in accordance with AOC standard operating procedures.

**Author:** Alan Duffy

**Date:** 8<sup>th</sup> September 2008

**Approved by:** John Gooder

**Date:** 8<sup>th</sup> September 2008

**Final Report Stage:**

**Date:** 8<sup>th</sup> September 2008

**Enquiries to:** AOC Archaeology Group  
Edgefield Industrial Estate  
Edgefield Road  
Loanhead  
EH20 9SY

Tel. 0131 440 3593  
Fax. 0131 440 3422  
e-mail. [admin@aocarchaeology.com](mailto:admin@aocarchaeology.com)



[www.aocarchaeology.com](http://www.aocarchaeology.com)

## Contents

	Page
List of illustrations .....	1
List of appendices.....	1
Abstract.....	2
0. NON TECHNICAL SUMMARY.....	3
1. INTRODUCTION .....	3
1.1 Site Location.....	3
1.2 Archaeological background .....	3
2. OBJECTIVES.....	3
3. METHOD .....	4
4. RESULTS .....	4
4.1 Introduction.....	4
4.2 Overview .....	4
5. DISCUSSION AND CONCLUSIONS .....	4
6. REFERENCES .....	4
APPENDIX 1: TRENCH SUMMARIES .....	6
APPENDIX 2: PHOTOGRAPHIC REGISTER .....	6
APPENDIX 3: DISCOVERY AND EXCAVATION IN SCOTLAND REPORT .....	7

## List of illustrations

Figure 1 Site location

Figure 2 Trench locations

## List of appendices

Appendix 1 Trench summaries

Appendix 2 Photographic Register

Appendix 3 DES entry

## **Abstract**

---

AOC Archaeology Group was commissioned by Scottish and Southern Energy plc to undertake an archaeological evaluation of a short linear alignment of boulders recorded during a recent walkover survey. The evaluation comprised two machine excavated liner trenches centred on and perpendicular to the linear feature. No archaeological features, deposits or artefacts were recorded during the evaluation.

## 0. NON TECHNICAL SUMMARY

- 0.1 AOC Archaeology Group was commissioned by Scottish and Southern Energy plc to undertake the evaluation of a short linear alignment of boulders recorded during a recent walkover survey (Hindmarch 2008) within the confines of a proposed windfarm at Fairburn, near Dingwall. The work was required in response to a planning condition set by the local planning authority, Highland Council, (Planning ref: RC/05/436/FULRC).
- 0.2 The proposed development has a generating capacity of under 50MW and therefore required consent from the local; planning authority under the Town and Planning (Scotland) Act 1997. It is also a competent matter under the Environment Impact Assessment (EIA) (Scotland) Regulations 1999 and was subject to an Environmental Impact Assessment (EIA) under Regulation 3 as it is likely to have a significant effect on the environment.

## 1. INTRODUCTION

### 1.1 Site Location

- 1.1.1 The windfarm site is centred at NGR: NH 4200 5200 (Figure 1) on upland moorland ranging between 250 m OD to 457 m OD at the peak of Beinn an Rubha Riabhaich. Feature 4 is located at NH 4262 5415 to NH 4261 5416, on a shallow slope close to the main access track (Figure 1).

### 1.2 Archaeological background

- 1.2.1 During an archaeological walkover survey (Hindmarch 2008) a number of archaeological features were recorded within the confines of the proposed windfarm development. These included a surface feature composed of a “short section of a slightly curved linear alignment of large stones (*Feature 4*). Due to the fact that this putative feature lay within the area of *Borrow Pit 1*, and was therefore vulnerable to disturbance from development activity, Highland Council required an archaeological evaluation of the feature.
- 1.2.2 The works required in were in accordance with NPPG 5 (SOEnd 1994) and PAN 42 (SOEnd 1994a), in order to determine the nature, extent, condition, date and significance of any archaeological remains within the windfarm development area.

## 2. OBJECTIVES

- 2.1 The objectives of the archaeological works were:
- i) to determine the character, extent, condition, quality, date and significance of the surface feature identified as *Feature 4*;
  - ii) to advise and implement an appropriate form of mitigation, such as excavation, post-excavation analyses and publication, should significant archaeological remains be encountered.

### 3. METHOD

- 3.1 The Written Scheme of Investigation (AOC 2008) proposed the mechanical excavation of two 20 m long by 2 m wide trenches, centred on and perpendicular to *Feature 4*.
- 3.2 The trenches were excavated with a 360° tracked excavator using a 2.0 m wide ditching bucket, under constant archaeological supervision (Figure 2). The trench details are summarised in Appendix 1. Machine excavation was conducted in shallow units/spits through the overburden to the upper surface of the underlying geological deposits.
- 3.3 At all times the evaluation trial trenching was undertaken according to AOC Archaeology Group's standard operating procedures detailed with the WSI. Colour slide, black & white print and digital photographs were taken during the course of the works (Appendix 2).

### 4. RESULTS

#### 4.1 Introduction

- 4.1.1 The works were conducted on 26<sup>th</sup> August 2008. The weather conditions during the evaluation were predominantly dry and sunny. Archaeological visibility was good.

#### 4.2 Overview

- 4.2.1 No significant archaeological features, deposits or artefacts were encountered during the evaluation. Examination of the spoil from trenches did not lead to the recovery of any significant unstratified artefacts.
- 4.2.2 The topsoil was recorded as between c 0.15 m and 0.30 m deep. The natural subsoil across the Trenches 1 and 2 was generally a very light brown sand or grey clay with occasional outcropping bedrock. Neither negative nor structural subsurface features were recorded. It is concluded that Feature 4 is of natural origin, consisting of discontinuous protrusions of natural bedrock

### 5. DISCUSSION AND CONCLUSIONS

- 5.1. No significant archaeological remains were recorded during the evaluation. The lack of finds from the spoil would also suggest that no significant archaeology lies within this area.
- 5.2 No further archaeological works are considered necessary. This recommendation with require confirmation from Highland Council.

### 6. REFERENCES

AOC 2008 *Fairburn Windfarm Evaluation of Feature 4: Written Scheme of Investigation*. Unpublished Client Document.

Hindmarch, E 2008 *Fairburn Windfarm: Walkover Survey*, AOC Archaeology Unpublished Client Document.

SOEnd 1994 *Planning Advice Note 42: Archaeology – the Planning Process and Scheduled Ancient Monument Procedures*. January 1994. The Scottish Office Environment Department.

SOEnd 1994a *National Planning Policy Guideline NPPG 5. Archaeology and Planning*. January 1994. The Scottish Office Environment Department.

SOEnd 1999 *National Planning Policy Guideline NPPG 18. Planning and the Historic Environment*. The Scottish Office Development Department.





Figure 1: Site location map



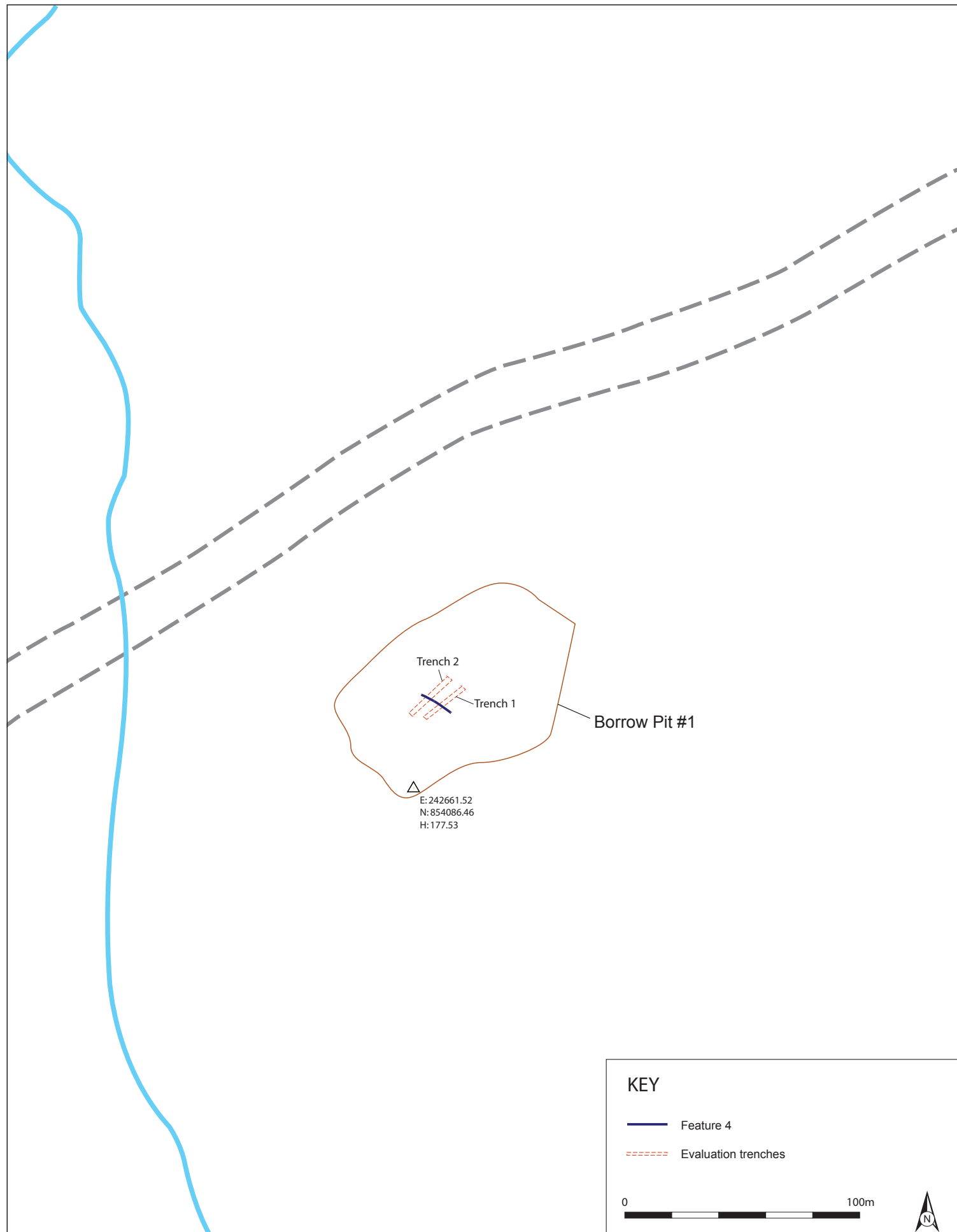


Figure 2: Trench Location

## APPENDIX 1: TRENCH SUMMARIES

### Trench 1

Dimensions	20 m by 2 m
Orientation	SW-NE
Depth to Subsoil	0.15 m to 0.30 m.
Significant Features	No archaeological features encountered.
Finds	No unstratified material.

### Trench 2

Dimensions	20 m by 2 m
Orientation	SW-NE
Depth to Subsoil	0.30 m to 0.40 m.
Significant Features	No archaeological features encountered.
Finds	No unstratified material.

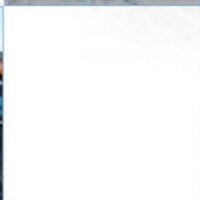
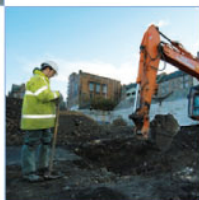
## APPENDIX 2: PHOTOGRAPHIC REGISTER

Colour Slide, Black & White Print and Digital – FILM No.1

Shot No.	Area	Description	From
1&2		Registration shot	
3&4	W	Feature 4 – General shot	S
5&6	W	Trench 1 – General shot	W
7&8	W	Trench 1 – General shot	E
9&10	W	Trench 2 – General shot	W
11&12	W	Trench 2 – General shot	E

## APPENDIX 3: DISCOVERY AND EXCAVATION IN SCOTLAND REPORT

<b>LOCAL AUTHORITY:</b>	Highland Council
<b>PROJECT TITLE/SITE NAME:</b>	Fairburn Windfarm Evaluation
<b>PROJECT CODE:</b>	AOC 20943
<b>PARISH:</b>	Urray
<b>NAME OF CONTRIBUTOR:</b>	Alan Duffy
<b>NAME OF ORGANISATION:</b>	AOC Archaeology Group
<b>TYPE(S) OF PROJECT:</b>	Archaeological Evaluation
<b>NMRS NO(S):</b>	None
<b>SITE/MONUMENT TYPE(S):</b>	None
<b>SIGNIFICANT FINDS:</b>	None
<b>NGR (2 letters, 6 figures)</b>	NH 4262 5415 to NH4261 5416
<b>START DATE (this season)</b>	26th August 2008
<b>END DATE (this season)</b>	26th August 2008
<b>PREVIOUS WORK (incl. DES ref.)</b>	Walkover survey
<b>MAIN (NARRATIVE) DESCRIPTION:</b> (May include information from other fields)	An archaeological evaluation was conducted at the site of a 12 m long curvilinear surface feature ( <i>feature 4</i> ), consisting of four large stones, recorded during an earlier walkover survey of this proposed windfarm development. The evaluation recorded no significant archaeological features, deposits or artefacts.
<b>PROPOSED FUTURE WORK:</b>	None
<b>CAPTION(S) FOR ILLUSTRS:</b>	n/a
<b>SPONSOR OR FUNDING BODY:</b>	Scottish and Southern Energy
<b>ADDRESS OF MAIN CONTRIBUTOR:</b>	AOC Archaeology Group Edgefield Road Industrial Estate Edgefield Road Loanhead Midlothian EH20 9SY
<b>EMAIL ADDRESS:</b>	Ronan.Toolis@aocarchaeology.com
<b>ARCHIVE LOCATION (intended/deposited)</b>	MNRS



**AOC Archaeology Group**, Edgefield Industrial Estate, Edgefield Road, Loanhead EH20 9SY  
tel: 0131 440 3593 | fax: 0131 440 3422 | e-mail: [edinburgh@aocarchaeology.com](mailto:edinburgh@aocarchaeology.com)

[www.aocarchaeology.com](http://www.aocarchaeology.com)