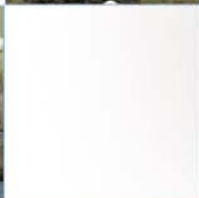


Fairburn Windfarm: Walkover Survey Report

AOC Project No. 20943

May 2008



ARCHAEOLOGY

HERITAGE

CONSERVATION

Fairburn Windfarm: Walkover Survey Report

On Behalf of:	Scottish and Southern Energy plc Inveralmond House 200 Dunkeld Road Perth PH1 3AQ
National Grid Reference (NGR):	NH 4200 5200
AOC Project No:	20943
Prepared by:	Erlend Hindmarch
Illustration by:	Douglas Park
Date of Fieldwork:	28th April – 3rd June 2008
Date of Report:	June 2008

This document has been prepared in accordance with AOC standard operating procedures.

Author: Erlend Hindmarch **Date:**

Approved by: John Gooder **Date:**

Draft Report Stage: X **Date:**

Enquiries to: AOC Archaeology Group
Edgefield Industrial Estate
Edgefield Road
Loanhead
EH20 9SY

Tel. 0131 440 3593
Fax. 0131 440 3422
e-mail. admin@aocarchaeology.com



www.aocarchaeology.com

Contents

	Page
List of illustrations	1
List of plates	1
List of appendices	1
Abstract.....	2
1 Introduction.....	3
1.1 Background	3
1.2 Location.....	3
1.3 Archaeological Background.....	4
2 Objectives.....	4
3 Method.....	4
4 Results.....	4
References.....	10
Appendix 1: Feature Descriptions	12
Appendix 2: Photographic Register	13
Colour Slide film 1.....	13
Colour Slide film 2.....	13
Black and white Print film 1	13
Black and white film 2	14
Digital Images 1	14
Digital images 2	14
Appendix 3: Discovery and Excavation in Scotland Report.....	15

List of illustrations

Figure 1	Site Location
Figure 2	Site Detail

List of plates

Plate 1	Feature 1 from west
Plate 2	Feature 2 from west
Plate 3	Feature 3 from south
Plate 4	Feature 4 from south

List of appendices

Appendix 1	Feature Descriptions
Appendix 2	Photographic Register
Appendix 3	DSR Entry

Abstract

This report documents the results of an archaeological walkover survey prior to the construction of a windfarm at Fairburn near Dingwall. A number of isolated features were recorded during the survey ranging from a possible shooting butt, the remains of two boundary walls and a short linear alignment of large boulders.

1 Introduction

1.1 Background

1.1.1 AOC Archaeology Group was commissioned by Southern and Southern Energy (SSE) plc to undertake a walkover survey prior to the construction of a windfarm at Fairburn, near Dingwall, Ross-shire. The proposal has a generating capacity of under 50MW and therefore required consent from the local planning authority, Highland Council, under the Town and Country Planning (Scotland) Act 1997. In addition, it is competent matter under the Environmental Impact Assessment (EIA) (Scotland) Regulations 1999 and was subject to an Environmental Impact Assessment (EIA) under Regulation 3 as it is likely to have a significant effect on the environment.

1.1.2 The archaeological works were designed to satisfy the initial requirements of the local planning authority, Highland Council, as advised by Highland Council Archaeology Unit (HCAU) and were conducted according to the terms of a Written Scheme of Investigation (AOC 2008) prepared by AOC and approved by HCAU and in accordance with the principles inherent in NPPG 5, NPPG 18 and PAN 42.

1.2 Location

1.2.1 The Proposed Fairburn Windfarm is located at NH 4200 5200 (Figure 1) near Dingwall in Ross-Shire. It is situated on upland moorland on ground of varying degrees of slope and ranges between heights of 250 m OD and 457 m OD at the peak of Beinn an Rubha Riabhaich.

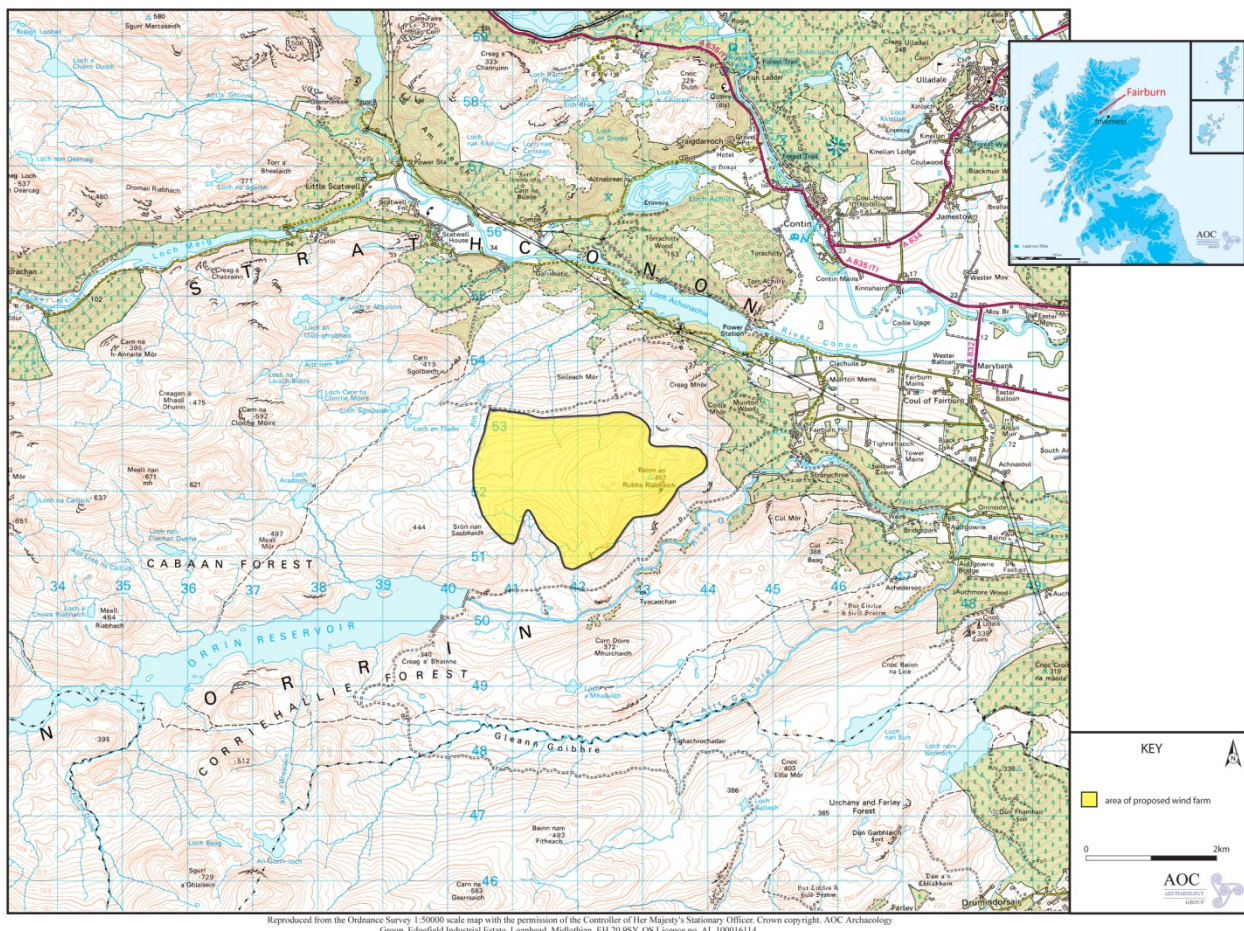


Figure 1: Site location

1.3 Archaeological Background

- 1.2.1 The Fairburn Windfarm Environmental Statement (May 2005 - Cultural Heritage) sets out the archaeological background both for the Windfarm site and its immediate environs. In summary the desk-based study and an initial walkover survey found no known cultural heritage remains located within the proposed windfarm site.
- 1.2.2 HCAU subsequently required that a more intensive walkover survey of the windfarm site be undertaken. The results of which are detailed in this document.

2 Objectives

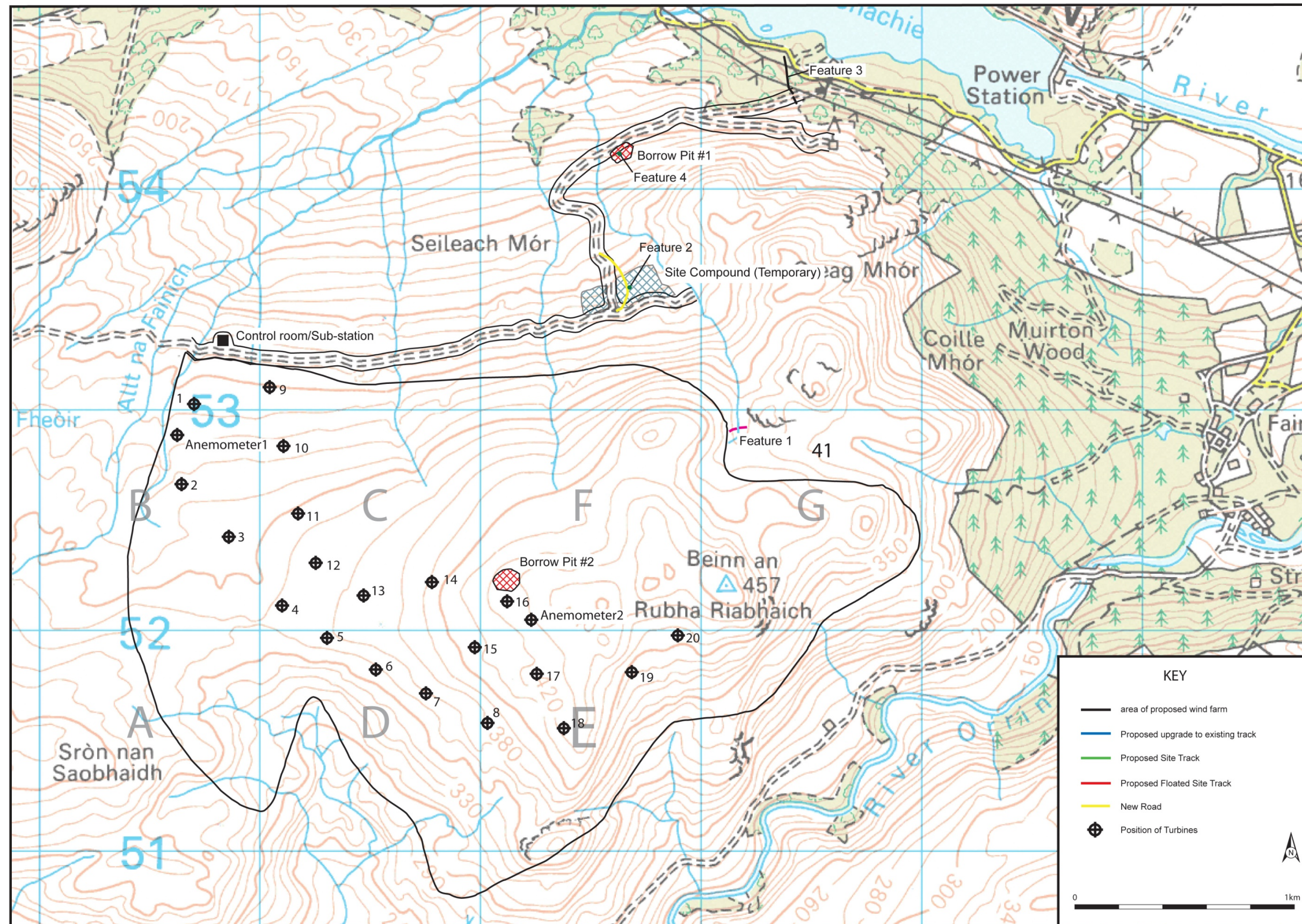
- 2.1 The objectives of the archaeological works are:
- i) to ascertain the character, condition, extent and quality of any archaeologically significant surface remains within the windfarm area;
 - ii) to report on the findings of the survey;
 - iii) to use the results of the walkover survey to inform a mitigation strategy compliant with NPPG 5, NPPG 18 and PAN 42 should there be an anticipated adverse archaeological impact by the windfarm development.

3 Method

- 3.1 The areas covered by the walkover survey include the area of the wind farm development, site compound, borrow pits, sub-station and, due to its proposed widening, the existing access road. For ease of location the area of the wind farm was divided into blocks (Areas A-G, Figure 2) based on National Grid squares with each square being walked in 30 m transects and included borrow pit 2. The access road was examined by firstly the road itself being walked while examination of the ground immediately adjoining it was observed followed by two transects, one either side of the road route at a distance of 20m away from the road. This also encompassed the area of the new sub-station, Borrow Pit 1 and the new site compound. Any significant features were recorded by means of a written and photographic record and the location of each feature was obtained by means of a hand held GPS unit with an accuracy of sub 8 metres.

4 Results

- 4.1 The evaluation was undertaken from the 28th April to the 2nd May 2008 plus a second visit on 3rd June 2008. The weather conditions during the survey varied from sunny spells to outbreaks of light rain making for good to fair atmospheric visibility however, due to the height of the vegetation, ground visibility was poor. The various data gathered from the evaluation are presented as a series of appendices:
- i) Appendix 1 contains the feature descriptions;
 - ii) Appendix 2 contains the Photographic Register;
 - iii) Appendix 3 reproduces the *Discovery and Excavation in Scotland* entry.



Reproduced from the Ordnance Survey 1:50000 scale map with the permission of the Controller of Her Majesty's Stationary Officer. Crown copyright. AOC Archaeology Group, Edgefield Industrial Estate, Loanhead, Midlothian, EH 20 9SY. OS Licence no. AL 100016114.

Figure 2: Site detail to show turbine location plus new road and location of features 1-4

- 4.2 Four features were identified during the walkover survey (Figure 2). *Feature 1* (Plate 1) was a linear feature located on the edge of the north-east corner of the site and extending from NGR: NH 4312 5289 to NH 4321 5291 a distance of 20 m. Although heavily overgrown this feature could be traced across the base of a col marking a change from relatively flat ground within the col and steeper ground sloping to the north. The structure appeared to be stone-built and stood to a height of 0.4 m with a width of 1.5 m. At about halfway along its length an entrance or gap was seen.



Plate 1: Feature 1 from west

- 4.3 *Feature 2* (Figure 2; Plate 2) was a three-sided sub-rectangular turf bank measuring 10 m by 10 m and standing to a height of approximately 0.35 m with the width of the walls being 1.25 m. The feature was located to the east side of the new road at NGR: NH 4268 5355 and within the proposed temporary site compound. The lack of vegetation on the sides of the feature suggests a relatively late date and it is thought likely to be a shooting butt.



Plate 2: Feature 2 from the west

- 4.4 *Feature 3* (Figure 2; Plate 3) was located during examination of the access road and consisted of a low stone-built linear feature extending from NGR: NH 4344 5438 to NH 4338 5459 and is considered to be the remains of an old drystone wall.

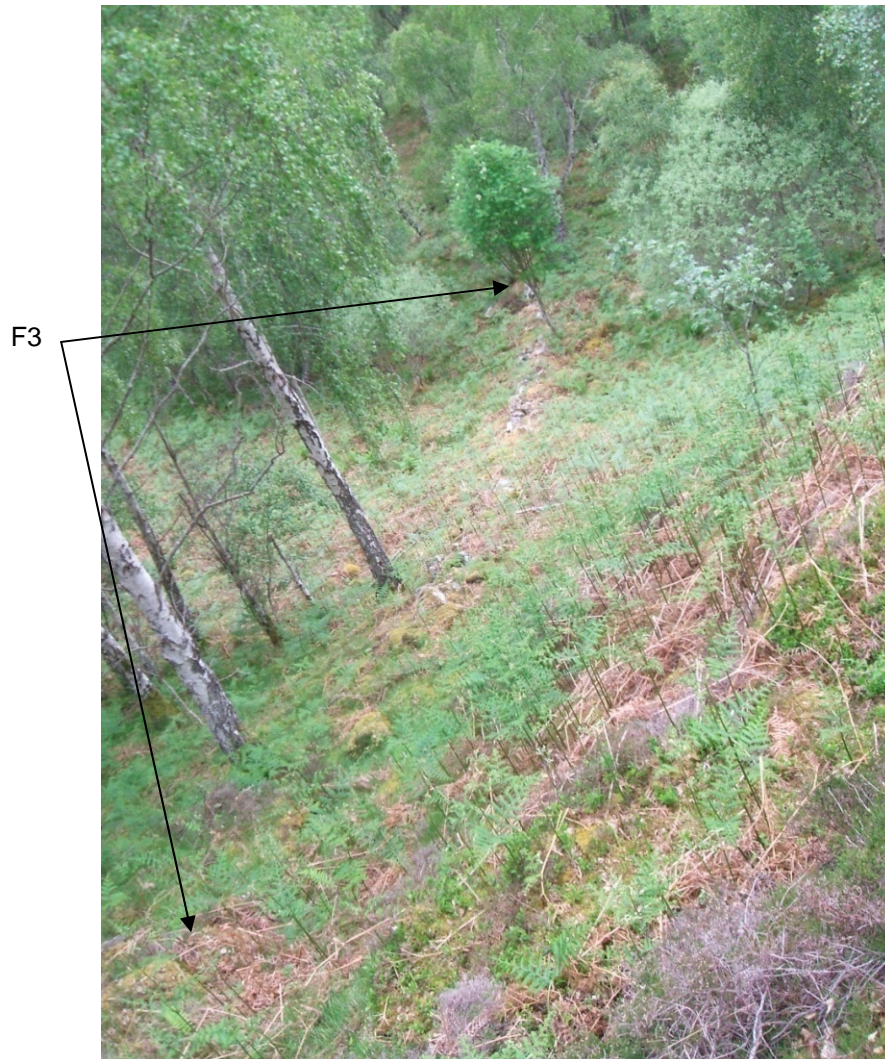


Plate 3: Feature 3 from south

- 4.5 *Feature 4* (Figure 2: Plate 4) was again a stone feature but differed from the others in the size of stones used in its construction and were much larger. It was located within the vicinity of borrow pit 1 and ran down the natural slope for about 12 m from NGR: NH 4262 5415 to NH 4261 5416. The date and function of this linear stone alignment is unknown.



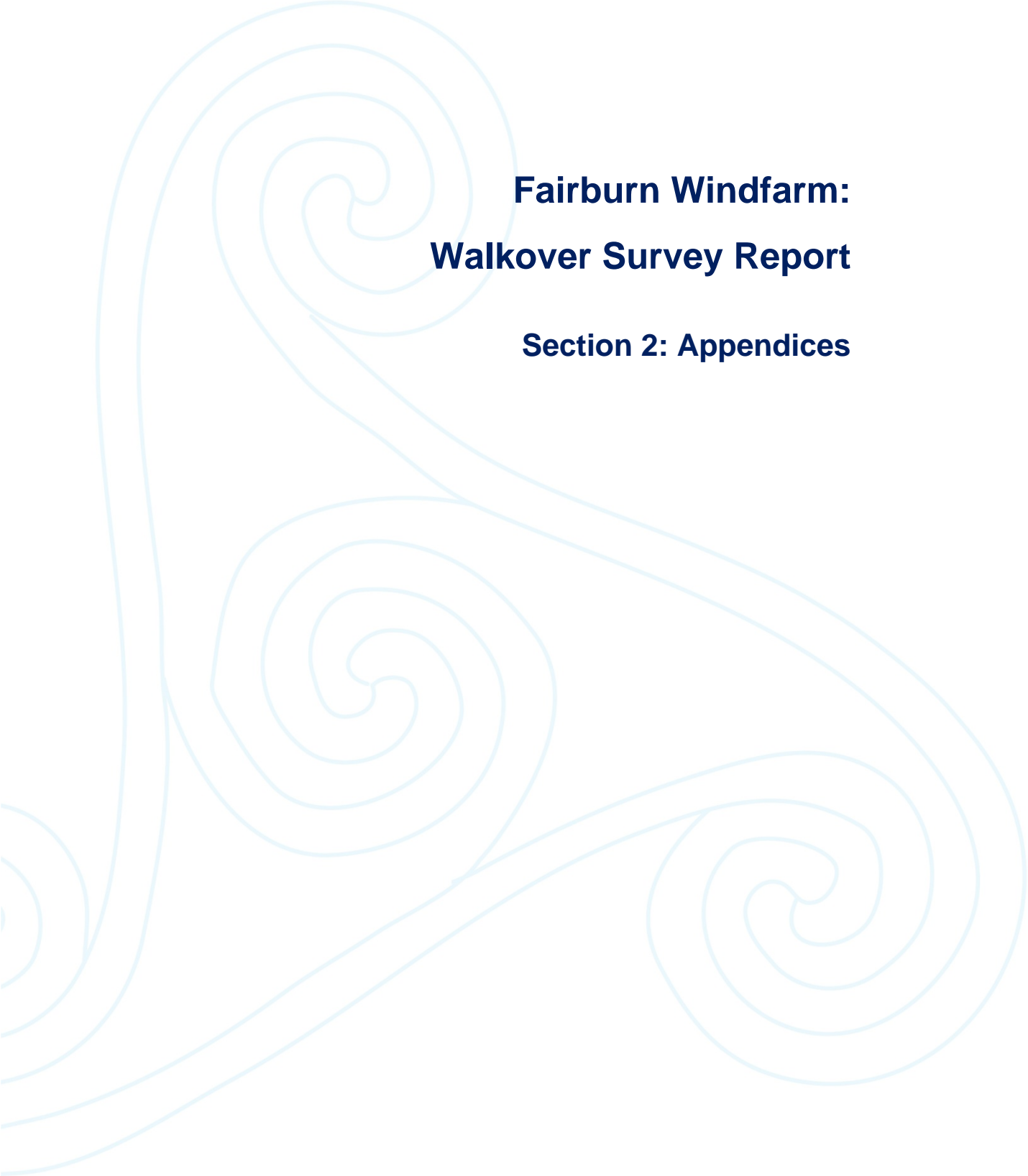
Plate 4: Feature 4 from south

5 Conclusion

- 5.1 The walkover survey identified four previously unrecorded features one of which, *Feature 2* is probably a shooting butt. *Feature 1* crosses the mouth of a col effectively forming an enclosure or possibly a temporary holding area for livestock. However this feature is both of limited archaeological significance and located on the very edge of the development area. It is thus unlikely to be affected by the construction of the wind farm. The development of the wind farm will have an impact on *Features 3 and 4*. *Feature 3*, the dry stone wall remains, will be affected by the widening of the access road but is of low archaeological value. As mentioned above *Feature 4* is constructed from larger stones than one may expect for a drystone wall and has a slight curve to it as such may be of greater archaeological significance. The location of this feature, on the edge of Borrow Pit 1, makes it vulnerable to disturbance from development activity in this area and therefore it may be prudent that further archaeological investigation is needed. No other features were observed elsewhere within the confines of the windfarm development area.

References

- AOC 2008, *Fairburn Walkover Survey: Written Scheme of Investigation*, Unpublished AOC Archaeology Document.
- NPPG 5 *National Planning Policy Guideline NPPG 5. Archaeology and Planning*. January 1994. The Scottish Office Environment Department 1994.
- NPPG18 *National Planning Policy Guideline NPPG 18, Planning and the Historic Environment*. The Scottish Office Development Department 1999.
- PAN 42 *Planning Advice Note 42. Archaeology – the Planning Process and Scheduled Ancient Monument Procedures*. January 1994. The Scottish Office Environment Department 1994.



Fairburn Windfarm: Walkover Survey Report

Section 2: Appendices

Appendix 1: Feature Descriptions

Feature Number	NGR	Interpretation	Description	Length (m)	Width (m)	Height (m)
1	NH 4312 5289 to NH 4321 5291	Boundary Wall	Raised linear bank, slightly curved and overgrown and aligned east to west. Appears to be stone-built with possible entrance/gateway in centre. Feature crosses mouth of col and may form a field boundary or temporary holding enclosure. Feature is located on the very edge of the development and is unlikely to be affected by the windfarm construction. Date unknown.	20	1.5	0.4
2	NH 4268 5355	Shooting butt	Three sided sub-rectangular turf built structure (south side missing). Located close to new road in area of boggy ground. Lack of vegetation on sides suggests recent construction and of little archaeological significance.	10 by 10	(of walls) 1.25	0.35
3	NH 4344 5438 To NH 4338 5459	Drystone wall	Low stone-built linear alignment of stone. Up to 3 courses of stone survive, with stones measuring from 0.2m by 0.16m by 0.15 m to 0.46 m by 0.2 m by 0.32 m. Stones are unworked field stones and no bonding material is present.		0.5	0.3 to 0.4
4	NH 4262 5415 To NH 4261 5416	Unknown	Short section of a slightly curved linear alignment of large stones. Stones measure from 0.4 m by 0.35 m by 0.14 m to 1.0 m by 0.6 m by 0.37 m. Aligned approximately north to south. No bonding material present.	12.0	0.6	0.3

Appendix 2: Photographic Register

Colour Slide film 1

No.	Feature/Area	Description	From
1		Registration	
2	Area A	General View	S
3	Area A	General View	S
4	Area B	General View	S
5	Area B	General View	S
6	Area C	General View	SE
7	Area F	General View	S
8	1	General View	E
9	1	General View	E
10	1	General View	W
11	1	General View	W
12	2	General View	S
13	2	General View	S
14	2	General View	W
15	2	General View	W

Colour Slide film 2

No.	Feature/Area	Description	From
1		Registration	
2	3	From road looking down hill	S
3	3	From road looking down hill	S
4	4	General	N
5	4	General	N
6	4	General	S
7	4	General	S
8	3	General	S
9	3	General	S

Black and white Print film 1

No.	Feature/Area	Description	From
1		Registration	
2	Area A	General View	S
3	Area A	General View	S
4	Area B	General View	S
5	Area B	General View	S
6	Area C	General View	SE
7	Area F	General View	S
8	1	General View	E
9	1	General View	E
10	1	General View	W
11	1	General View	W
12	2	General View	S
13	2	General View	S

14	2	General View	W
15	2	General View	W

Black and white film 2

No.	Feature/Area	Description	From
1		Registration	
2	3	From road looking down hill	S
3	3	From road looking down hill	S
4	4	General	N
5	4	General	N
6	4	General	S
7	4	General	S
8	3	General	S
9	3	General	S

Digital Images 1

No.	Feature/Area	Description	From
1		View from Beinn an Rubha Riabhaich	NW
2		View from Beinn an Rubha Riabhaich overlooking Area E	SE
3		View from Beinn an Rubha Riabhaich overlooking Area E	
4		View from Beinn an Rubha Riabhaich	
5	Area A	General View	S
6	Area B	General View	S
7	Area C	General View	SE
8	Area F	General View	S
9	1	General View	E
10	1	General View	E
11	1	General View	W
12	1	General View	W
13	2	General View	S
14	2	General View	S
15	2	General View	W
16	2	General View	W

Digital images 2

No.	Feature/Area	Description	From
1		Registration	
2	3	From road looking down hill	S
3	3	From road looking down hill	S
4	4	General	N
5	4	General	N
6	4	General	S
7	4	General	S
8	3	General	S
9	3	General	S

Appendix 3: Discovery and Excavation in Scotland Report

LOCAL AUTHORITY:	Highland Council
PROJECT TITLE/SITE NAME:	Fairburn Windfarm, Walkover Survey
PROJECT CODE:	20943
PARISH:	Urray
NAME OF CONTRIBUTOR(S):	Hindmarch, Erlend
NAME OF ORGANISATION:	AOC Archaeology Group
TYPES(S) OF PROJECTS:	Walkover Survey
NMRS NO(S):	None
SITE/MONUMENT TYPE(S):	None
SIGNIFICANT FINDS:	Two relict boundary walls, one linear alignment of large stones and one possible shooting butt.
NGR:	NH 4200 5200
START DATE:	28/04/2008
END DATE:	02/05/2008
PREVIOUS WORK:	Desk-based assessment and initial walkover survey included in The Fairburn Windfarm Environmental Statement
MAIN DESCRIPTION:	Prior to a windfarm development a walkover survey recorded four features comprising a possible shooting butt, two drystone walls of unknown date and a third stone linear feature constructed from much larger stones and also of unknown date.
PROPOSED FUTURE WORK:	Unknown
SPONSOR OR FUNDING	Scottish and Southern Energy
ADDRESS OF MAIN CONTRIBUTOR:	AOC Archaeology Group Edgefield Industrial Estate Edgefield Road Loanhead Midlothian EH20 9SY
EMAIL ADDRESS:	Erlend.Hindmarch@aocarchaeology.com
ARCHIVE LOCATION:	NMRS



AOC Archaeology Group, Edgefield Industrial Estate, Edgefield Road, Loanhead EH20 9SY

tel: 0131 555 4425 | **fax:** 0131 555 4426 | **e-mail:** admin@aocarchaeology.com

www.aocarchaeology.com